



# Titan Series

## Single & Two-Stage Liquid Ring Vacuum Pumps

### Performance Specs

#### Single-stage vacuum pumps

Nominal Capacity 6 - 1,200 CFM

Motor Size 0.75 - 100 HP

#### Two-stage vacuum pumps

Nominal Capacity 15 - 1,000 CFM

Motor Size 2 - 100 HP

#### Single-stage compressors

Nominal Capacity 15 - 1,100 CFM

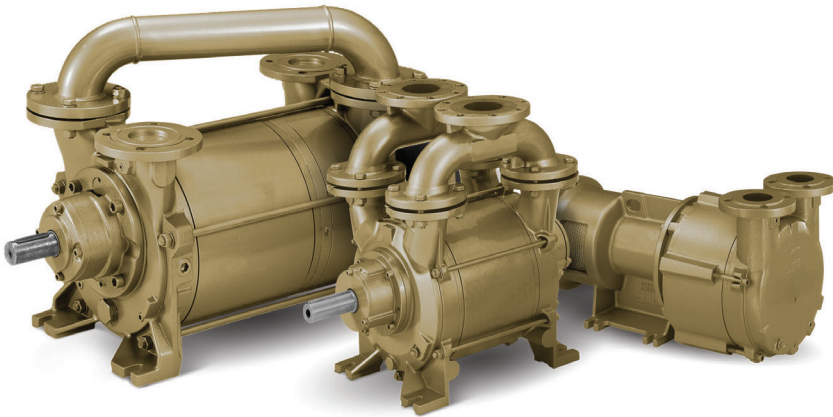
Motor Size up to 150 HP

Pressure up to 28 psig

The Dekker Titan Liquid Ring Pumps series features a variable discharge port design, this port automatically adjusts to the internal compression ratio. It offers exceptional efficiency with a single stage design. The Titan series of vacuum pumps registers levels up to 29" HgV, and offer high volumetric efficiency with less seal liquid requirement.

### Features

- Designed for heavy duty applications
- 316 stainless steel impeller is standard
- Sturdy Bearing pedestal mounts to standard NEMA C-face motor
- Manufactured to ISO 9001:2015 standards
- Low operating noise level
- Heavy duty bearings mounted external to the pumping chamber
- Features single face mechanical seal as standard
- Virtually no maintenance is required
- Pumps are available in different materials to suit your application
- Capable of handling saturated gas mixtures
- Capable of handling small amounts of liquids
- Only one moving part
- Operates using various seal fluids



#### Illinois Location:

(847) 841-7867

860 Church Rd Elgin, IL 60123

#### Minnesota Location:

(651) 758-7867

330 Mill Bay South Suite 1511  
Afton, MN 55001

PumpSupplyInc.com



titan 