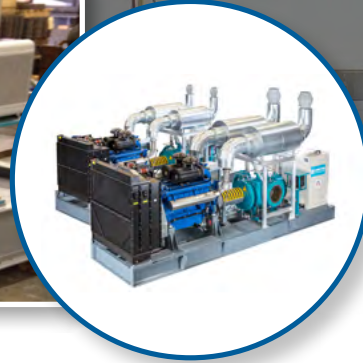
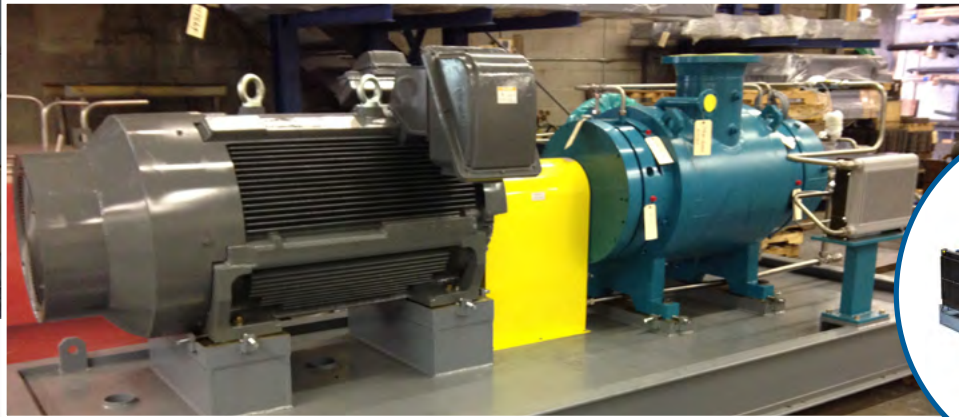
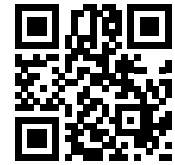


The Industry's Most Flexible Range of Products for Any Terminal Pumping Needs



- The Leistritz full program of two, three, and five screw pump designs optimize the pump selection according to each tank terminal's liquid handling requirements.
- We offer horizontally mounted pumps with electric or engine drive, as well as vertically mounted pumps and service friendly installations with packing, mechanical seal or seal-less mag drive execution for the most environmentally friendly operation.
- Leistritz pumps work with low pulsations and air borne noise, and can be equipped with a soundproof enclosure when required.
- Offer higher efficiency and lower power consumption when handling viscous and air entrained fluids, when compared with centrifugal and other PD pumps like vane or gear pumps.
- Low internal velocity contributes to high suction lift and low NPSH requirement, which allows faster stripping of tanks, flow lines, and shortened turnaround.
- Shear sensitive and non-Newtonian emulsions are pumped with minimal agitation and stress, limiting further process issues.
- The pumps can work in opposite flow directions for emptying lines and loading racks.
- Leistritz pumps can be tailored to replace older pumps, keeping previous nozzle connections and footprint for matching an existing installation.
- Pumps operate at the best efficiency point (BEP) using pump speed control to stay at the optimum flow and discharge pressure, also under varying pumping conditions.
- Uses smart controls and monitoring to avoid potentially damaging operating conditions and allowing preventive maintenance to cut operating costs.

Centrifugal Pump Viscosity Correction Factors (appr. values related to water data in %)

Viscosity (cSt)	50	100	160	220
Flow reduction	-8	-14	-19	-23
Head reduction	-5	-11	-14	-18
Power increase	+20	+30	+50	+65

