

# SIZE 48 PUMP SERIES

## EXPLODED VIEWS

90° or Thru Ports | Models 3248-4748



### PKG SET

- N43-3 STD
- N43-187 TFE IMPREGNATED
- N43-156 TFE/GRAPHITE
- N43-105 PURE TFE
- N43-181 GRAPHITE FILAMENT
- N43-174 GARLOCK DSA
- N43-226 WEDGE

### MECH SEAL

- G4-112 STD
- G4-142 FLUOROELASTOMER
- G4-165 TFE / VITON O-RING
- (REQUIRES MOD BACKPLATE & D8-444 LOCATOR RING OUTBOARD TO SEAL. DO NOT USE D45-166 SEAL SPACER).

### \*\*\*FOR TRIPLE LIP SEAL WITH BACK-UP PACKING:

- a) SPECIFY PACKING MATERIAL (COMPLETE PKG SET NOT USED)
- b) G17-234 LIP SEAL USED IN PLACE OF PACKING WASHER
- c) PKG LOCKNUTS HANDTIGHT ONLY

### RV FACEPLATE ASSEMBLY

(INCLUDES FACEPLATE ASSEMBLY AND ALL RV COMPONENTS)  
BUNA O-RING

- #### STD PRESSURE
- N7-487 BRZ STL
  - N7-534 LUBED BRZ STL
  - N7-494 CRBN STL
  - N7-641 LUBED CRBN STL
  - N7-496 IRON STL

- #### HI PRESSURE
- N7-488 BRZ STL
  - N7-535 LUBED BRZ STL
  - N7-495 CRBN STL
  - N7-642 LUBED CRBN STL
  - N7-784 IRON STL

### RV FACEPLATE ASSEMBLY

(INCLUDES FACEPLATE ASSEMBLY AND ALL RV COMPONENTS)  
VITON O-RING

- #### STD PRESSURE
- N7-500 BRZ STL
  - N7-1004 LUBED BRZ STL
  - N7-570 CRBN STL
  - N7-993 LUBED CRBN STL
  - N7-907 CRBN SST
  - N7-909 IRON STL
  - N7-795 LUBED IRON STL
  - N7-749 IRON SST

- #### HI PRESSURE
- N7-501 BRZ STL
  - N7-1005 LUBED BRZ STL
  - N7-571 CRBN STL
  - N7-908 CRBN SST
  - N7-1055 IRON STL
  - N7-796 LUBED IRON STL

### FACEPLATE ASSEMBLY

PLAIN (P3-675):

- N3-405 BRZ
- N3-477 BRZ
- N3-479 LUBED BRZ
- N3-478 CRBN
- N3-553 LUBED CRBN
- N3-480 IRON
- N3-905 LUBED IRON

### RV (P3-618)

(DOES NOT INCLUDE RV COMPONENTS)

- N3-405 BRZ
- N3-443 LUBED BRZ
- N3-412 CRBN
- N3-554 LUBED CRBN
- N3-413 IRON
- N3-680 LUBED IRON

### RV FACEPLATE ONLY

- G49-050600 (2)
- HEX HD CAP SCREW
- G33-6
- RV SEAL NUT, TFE

- D15-42
- ADJUSTING SCREW

- D22-122 STUD
- G44-050 HEX NUT

- (HI REQ BOTH SPRINGS)
- STEEL
- G10-383 STD
- G10-383 + G10-386 HI

- SST
- G10-445 STD
- G10-445 + G10-446 HI

### 3248-4748 BH, HB, GHB, SBH TYPE 3



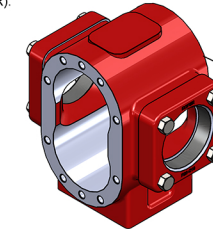
www.roperpumps.com  
FEB 2023

### RV SPRING

(HI REQ BOTH SPRINGS - FOUR TOTAL)

- STEEL
- (2) G10-383 STD
- (2) G10-383 + (2) G10-386 HI

- SST
- (2) G10-445 STD
- (2) G10-445 + (2) G10-446 HI



### CASE & WARNING TAG ASSEMBLY

N22-342 4x48

### DRIVE SHAFT

PKG/MECH SEAL

- BH
- D1-2435 STL
- D1-2640 SST
- HB
- D1-2009 STL
- D1-2085 SST
- D1-2011 STL
- D1-2083 SST

### TRIPLE LIP SEAL

- BH
- D1-2952 STL
- D1-3028 SST
- HB
- D1-2950 STL
- D1-3043 SST
- GHB
- D1-2951 STL
- D1-xxxx SST

### FLANGE KIT

(TWO KITS REQ'D PER PUMP)  
INCLUDES FLANGE, GASKET, & HARDWARE

- N14-57 2" NPT THRU
- N14-21 3" NPT THRU
- N14-22 4" NPT THRU (STD)
- N14-23 3" NPT ELBOW
- N14-24 4" NPT ELBOW

### DRIVE GEAR, RH

HB & GHB

- P6-384 CAST IRON
- D6-1148 SST
- BH
- P6-385 CAST IRON
- D6-1431 SST

### IDLER GEAR, LH

HB & GHB

- P6-383 CAST IRON
- D6-1147 SST

### G48-49

DOWEL PIN (4)

### IDLER SHAFT

- D1-2087 STL
- D1-2088 SST

### KEY

- D30-10 STL
- D30-203 SST

### CASE GASKET (3)

- D11-493 ALUM

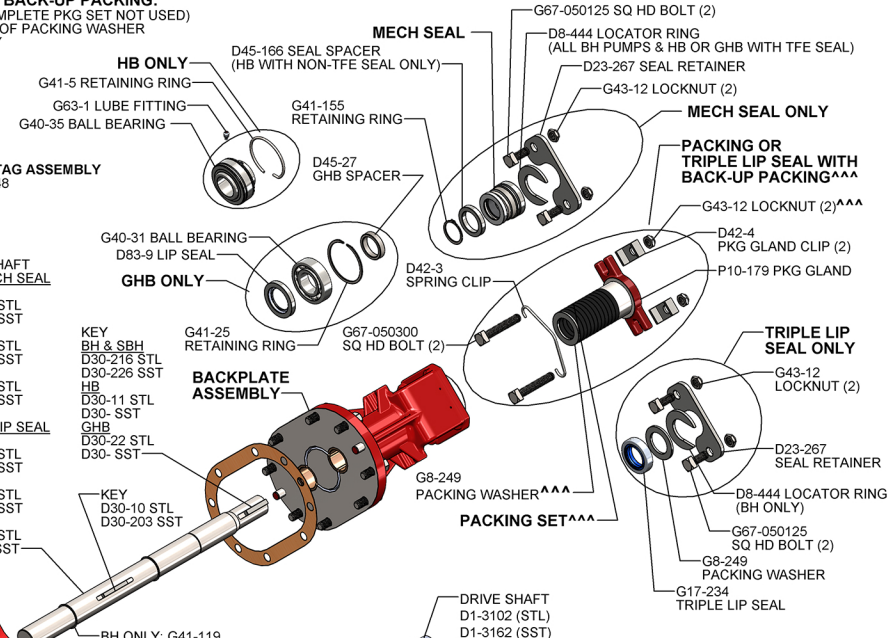
### O-RING (2)

- G14-485 BUNA
- G69-21 VITON

### D16-112 RV POPPET (4)

- D15-42 (2)
- ADJUSTING SCREW

- G49-050125 (6)
- HEX HD CAP SCREW



### HB ONLY

- D45-166 SEAL SPACER (HB WITH NON-TFE SEAL ONLY)
- G41-5 RETAINING RING
- G63-1 LUBE FITTING
- G40-35 BALL BEARING

### GHB ONLY

- G40-31 BALL BEARING
- D83-9 LIP SEAL

### KEY

- BH & SBH
- D30-216 STL
- D30-226 SST
- GHB
- D30-11 STL
- D30-11 STL
- D30-22 STL
- D30-22 STL
- D30-22 STL

### KEY

- D30-10 STL
- D30-203 SST

### BH ONLY: G41-119

RETAINING RING (2)

### SHORT BACKPLATE ASSEMBLY

- N2-1799 (BRZ)
- N2-1802 (CRBN)
- N2-1813 (IRON)

### BV FACEPLATE ASSEMBLY

- BV (P3-932)
- (DOES NOT INCLUDE RV COMPONENTS)
- N3-789 BRZ
- N3-843 CRBN
- N3-844 IRON

### BV ASSEMBLY

(INCLUDES FACEPLATE ASSEMBLY AND ALL RV COMPONENTS)  
BUNA O-RING

- STD PRESSURE
- N7-909 BRZ STL
- N7-947 BRZ SST
- N7-948 CRBN STL
- N7-949 CRBN SST
- N7-950 IRON STL
- N7-951 IRON SST

- HI PRESSURE
- N7-910 BRZ STL
- N7-952 BRZ SST
- N7-953 CRBN STL
- N7-954 CRBN SST
- N7-955 IRON STL
- N7-956 IRON SST

### MECH SEAL

- D45-27 GHB SPACER
- G41-155 RETAINING RING

### PACKING OR TRIPLE LIP SEAL WITH BACK-UP PACKING\*\*\*

- G43-12 LOCKNUT (2)\*\*\*
- D42-3 SPRING CLIP

### TRIPLE LIP SEAL ONLY

- G43-12 LOCKNUT (2)
- D23-267 SEAL RETAINER

### PACKING SET\*\*\*

- G8-249 PACKING WASHER\*\*\*
- G17-234 TRIPLE LIP SEAL

### DRIVE SHAFT

- D1-3102 (STL)
- D1-3162 (SST)

### G17-232 LIP SEAL

- G41-25 RETAINING RING
- G40-31 BALL BEARING
- G41-94 RETAINING RING

### BEARINGS

(INCLUDED IN BACKPLATE AND FACEPLATE ASSEMBLIES)

- LONG BRG (QTY ONE IN FACEPLATE)
- QTY TWO IN BACKPLATE)
- G5-265 BRZ
- G5-465 CARBON
- G5-269 IRON

### SHORT BRG

(QTY ONE IN BACKPLATE ONLY)

- G5-264 BRZ
- G5-465 CARBON
- G5-270 IRON

### BV ASSEMBLY

(INCLUDES FACEPLATE ASSEMBLY AND ALL RV COMPONENTS)  
VITON O-RING

- STD PRESSURE
- N7-957 BRZ STL
- N7-958 BRZ SST
- N7-959 CRBN STL
- N7-960 CRBN SST
- N7-961 IRON STL
- N7-962 IRON SST

- HI PRESSURE
- N7-963 BRZ STL
- N7-964 BRZ SST
- N7-965 CRBN STL
- N7-966 CRBN SST
- N7-967 IRON STL
- N7-968 IRON SST

### BACKPLATE ASSEMBLY

- BH (P2-1558)
- N2-1340 BRZ
- N2-1445 LUBED BRZ
- N2-1341 CRBN
- N2-1669 LUBED CRBN
- N2-1342 IRON
- N2-1776 LUBED IRON

### MOD BH (TFE MECH) N/A

- HB (P2-1359)
- N2-1036 BRZ
- N2-1039 LUBED BRZ
- N2-1037 CRBN
- N2-1224 LUBED CRBN
- N2-1038 IRON
- N2-1432 LUBED IRON

### MOD HB (P2-1402)

(TFE MECH)

- N2-1220 BRZ
- N2-1082 CRBN
- N2-1230 IRON

### GHB (P2-1360)

- N2-1040 BRZ
- N2-1602 LUBED BRZ
- N2-1041 CRBN
- N2-1641 LUBED CRBN
- N2-1042 IRON
- N2-1675 LUBED IRON

### MOD GHB (P2-1403)

(TFE MECH)

- N2-1076 BRZ
- N2-1182 CRBN
- N2-1427 IRON