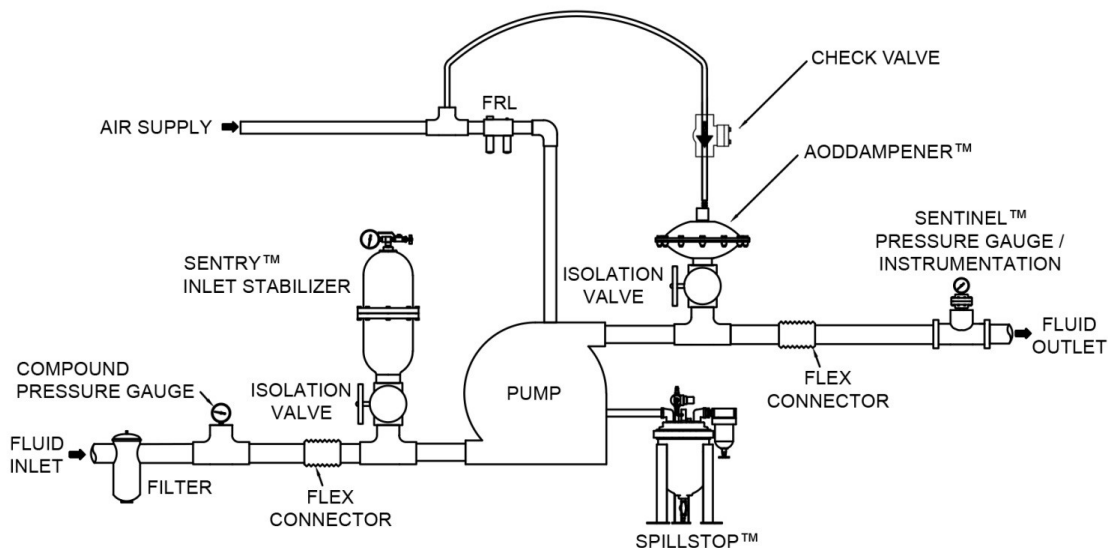


## AODDampener Installation, Operation, and Maintenance Update

11 October 2016

BLACOH has become aware that some AODDampener users may not fully understand the necessity of maintaining air pressure to the dampener at all times. Failure to maintain a charge to the dampener may result in damage to the PTFE diaphragm. The air supply connection should be made directly to the compressed air source and not restricted by any regulator used to regulate pressure to the air operated double diaphragm pump.

In some cases, especially installations with static head pressure, it is recommended to add a check valve to the dampener air supply line to ensure that the pressure to the dampener is maintained in the event of a power outage or compressor shut down. This check valve will not affect the automatic operation of the dampener as the exhaust is a separate port; however, it will prevent loss of pressure via the air inlet of the dampener in the event of a loss of pressure in the air supply line.



**Figure 1:** Recommended AODDampener installation with check valve

For additional information or assistance, call us at 951.342.3100 or email us at [sales@blacoh.com](mailto:sales@blacoh.com).