



Primeroyal® X

POWER UP

Illinois Location:

(847) 841-7867

860 Church Rd Elgin, IL 60123

Minnesota Location:

(651) 758-7867

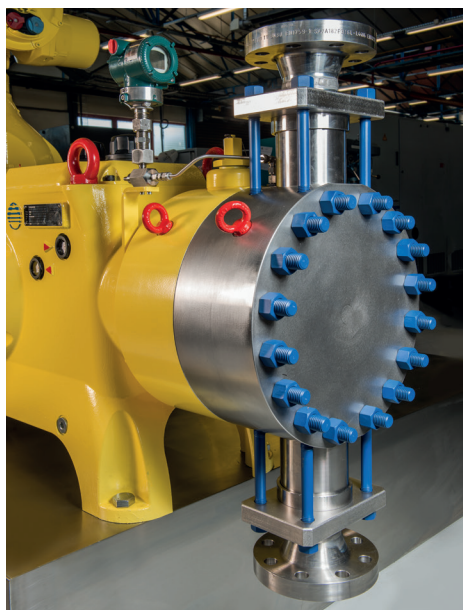
330 Mill Bay South Suite 1511 Afton, MN 55001

PumpSupplyInc.com



Prepare to power up with Primeroyal® X

Our most powerful API 675 pump yet.



The 20K PSIG Primeroyal X delivers greater flow and higher pressure ranges.

Milton Roy's new Primeroyal X pump extends capabilities in even the most challenging environments at 20K PSIG.

Its design, which meets the rigorous standards of API 675, packs a range of features into a reduced deck footprint, delivering required flow and ensuring chemical delivery for even the deepest subsea wells.

Complementing its power with accurate control, Primeroyal X consistently delivers exceptional safety and reliability, making this the pump for operators that demand more.

The Primeroyal X builds on our vast experience and legacy.

The latest addition to the Primeroyal series of pumps pushes the boundaries for greater flow and higher pressures in a wide range of oil and gas applications. The Primeroyal X helps to prevent hydrate formation, wax and scale deposits, and corrosion to manage production effectively.

As we continue to engineer customized solutions to meet the challenges faced by industries worldwide, our culture of continuous technological improvement drives us forward. This expertise comes with a global network of highly trained field engineers and after-sales support that is second-to-none.

If you need a single source solution for all your pump requirements, it's Milton Roy.

Illinois Location:

(847) 841-7867

860 Church Rd Elgin, IL 60123

Minnesota Location:

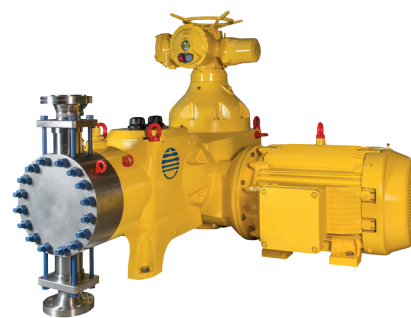
(651) 758-7867

330 Mill Bay South Suite 1511 Afton, MN 55001

PumpSupplyInc.com



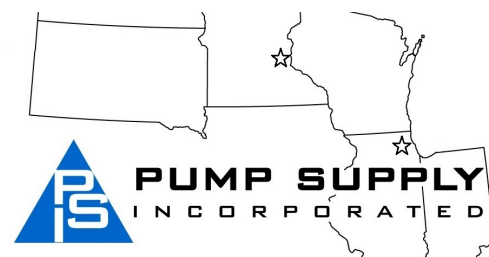
The Primeroyal X with metallic liquid end and metallic double diaphragm, vertical motor configuration, and manual stroke adjustment.



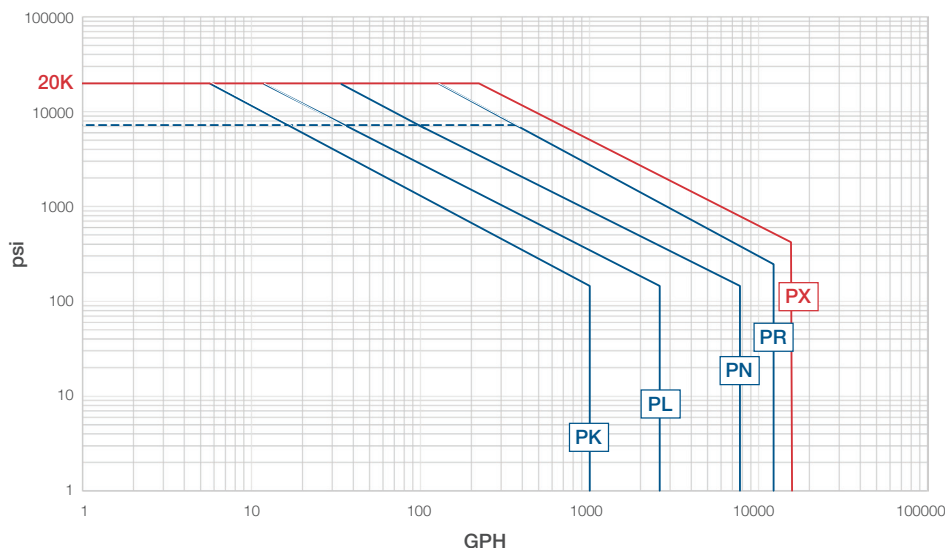
The Primeroyal X with metallic liquid end and PTFE (Teflon®) double diaphragm, horizontal motor configuration, and actuator with integrated electronics.

The Primeroyal X further extends Milton Roy's industry-leading pump range.

Our latest design further enhances Milton Roy's Primeroyal range of metering pumps and continues our tradition of engineering pumps for design excellence, modular installation and flexible application to deliver exceptional safety, reliability and performance.



Performance Ratings of Triplex Primeroyal Pumps



The dotted blue line indicates former pump pressure performance. The enhancements have extended the performance ratings of the entire Primeroyal pump series.

Design specifications:

Available in vertical or horizontal motor configurations, the Primeroyal X will reach flows up to 16,000 gph in its triplex configuration. Designed with multiple liquid ends, from packed plunger to PTFE or metallic double diaphragm, the Primeroyal X has been engineered to work in the most severe conditions, up to 20,000 PSIG.

- Thrust: 6 tons
- Stroke 100%: 120 mm
- Max. frequency: 175 spm
- API 675 3rd edition
- Motor 75 kW (simplex) – energy efficient
- Multiplexing available
- Manufacturing ISO 29001 Certification

We are a proud member of **Accudyne Industries**, a leading global provider of precision-engineered, process-critical and technologically advanced flow control systems and industrial compressors. Delivering consistently high levels of performance, we enable customers in the most important industries and harshest environments around the world to accomplish their missions.



Illinois Location:
(847) 841-7867
860 Church Rd Elgin, IL 6

Minnesota Location
(651) 758-7867
330 Mill Bay South Suite
Afton, MN 55001

PumpSupplyInc.com

A graphic featuring a map of the United States with the states of Illinois and Minnesota highlighted. Two stars are placed on the map: one in Illinois and one in Minnesota. Below the map is the logo for Pump Supply Incorporated, which consists of a blue triangle containing the letters "PS" in white, followed by the text "PUMP SUPPLY INCORPORATED" in a bold, sans-serif font.