

SALES AND ENGINEERING DATA

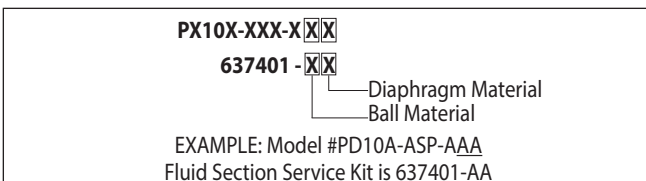
RATIO SERIES:	1:1
FLUID PSIG RANGE:	20 - 120
RELEASED:	4-13-04
REVISED:	6-17-22
(REV: M)	S-1305

PD10X-XXX-XXX, PE10X-XXX-XXX AND PZ10X-XXX-XXX 1" METALLIC DIAPHRAGM PUMP

SPECIFICATIONS

CONSTRUCTION	
Model Series	PD10X-XXX-XXX PE10X-XXX-XXX PZ10X-XXX-XXX
Pump Type	Metallic, Air Operated, Double Diaphragm
Ratio	1:1
Material Inlet / Outlet	
PX10X- <u>A</u> XX-XXX (female)	1 - 11-1/2 NPTF - 2
PX10X- <u>B</u> XX-XXX (female)	Rp 1 (1 - 11 BSP Parallel)
PX10X- <u>F</u> XX-XXX	1" ANSI / DIN Flange (Raised Face)
Air Inlet (female)	1/4 - 18 NPT
Air Exhaust (female)	3/4 - 14 NPT
Weight	
PX10R- <u>X</u> AX-XXX	20.65 lbs (9.37 kgs)
PX10R- <u>X</u> CX-XXX	35.2 lbs (16.0 kgs)
PX10R- <u>X</u> HX-XXX	39.6 lbs (18.0 kgs)
PX10R- <u>A</u> SX-XXX	38.2 lbs (17.3 kgs)
PX10R- <u>B</u> SX-XXX	38.2 lbs (17.3 kgs)
PX10R- <u>F</u> HX-XXX	45.4 lbs (20.6 kgs)
PX10R- <u>F</u> SX-XXX	43.9 lbs (19.9 kgs)
Add 4.65 lbs (2.11 kg) for Aluminum air motor section	
Add 11.09 lbs (5.03 kg) for Stainless Steel air motor section	
Air Section Service Kit	637397
Major Air Valve Assembly	
PX10 <u>A</u> -XXX-XXX	637395-3
PX10 <u>R</u> -XXX-XXX	637395-1
PX10 <u>S</u> -XXX-XXX	637395-5
PE10 <u>A</u> -XXX-XXX	637395-4
PE10 <u>R</u> -XXX-XXX	637395-2
PE10 <u>S</u> -XXX-XXX	637395-6
Fluid Section Service Kit	637401-XX

PERFORMANCE	
Maximum Air Inlet Pressure	120 psig (8.3 bar)
Maximum Material Inlet Pressure	10 psig (0.69 bar)
Maximum Outlet Pressure	120 psig (8.3 bar)
Maximum Flow Rate (flooded inlet)	52.2 gpm (197.6 lpm)
Displacement / Cycle @ 100 psig	0.232 gal. (0.88 lit.)
Maximum Particle Size	1/8" dia. (3.3 mm)
Maximum Temperature Limits (diaphragm / ball / seat material)	
E.P.R. / EPDM	-60° to 280° F (-51° to 138° C)
Hytrel®	-20° to 180° F (-29° to 82° C)
Nitrile	10° to 180° F (-12° to 82° C)
Polypropylene	32° to 175° F (0° to 79° C)
Santoprene®	-40° to 225° F (-40° to 107° C)
PTFE	40° to 225° F (4° to 107° C)
Viton®	-40° to 350° F (-40° to 177° C)
Noise Level @ 70 psig - 60 cpm	80.6 dB(A) ^①
① The pump sound pressure level has been updated to an Equivalent Continuous Sound Level (LA _{eq}) to meet the intent of ANSI S1. 13-1971, CAGI-PNEUROP S5.1 using four microphone locations.	



Illinois Location:
(847) 841-7867
860 Church Rd Elgin, IL 60120

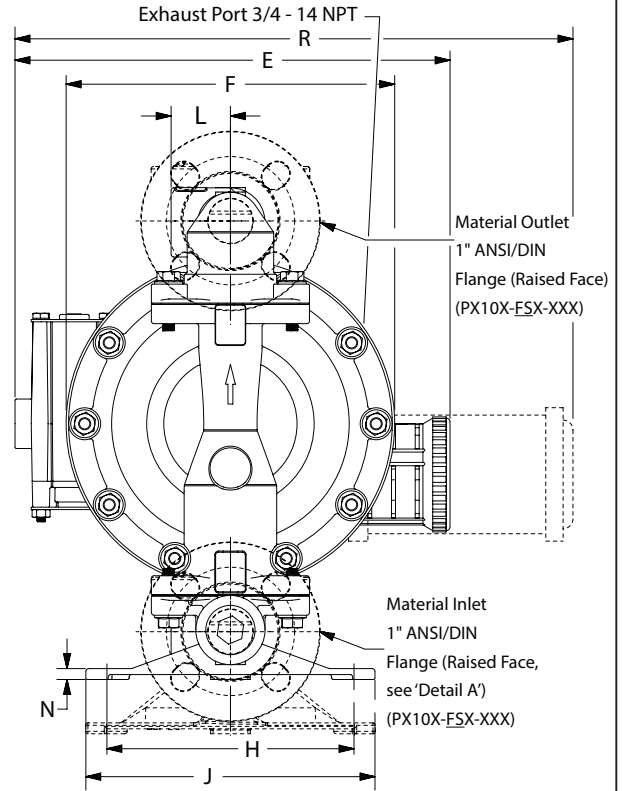
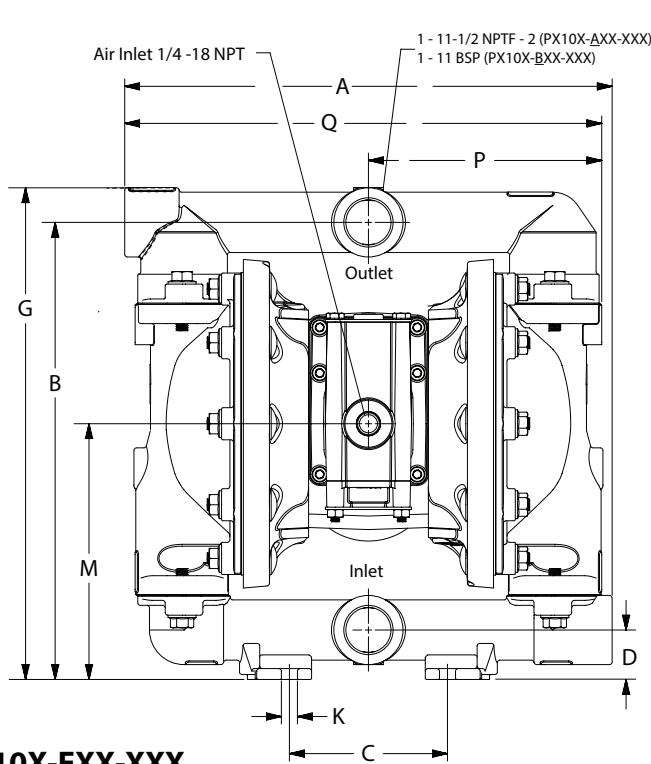
Minnesota Location:
(651) 758-7867
330 Mill Bay South Suite 100
Afton, MN 55001

PumpSupplyInc.com

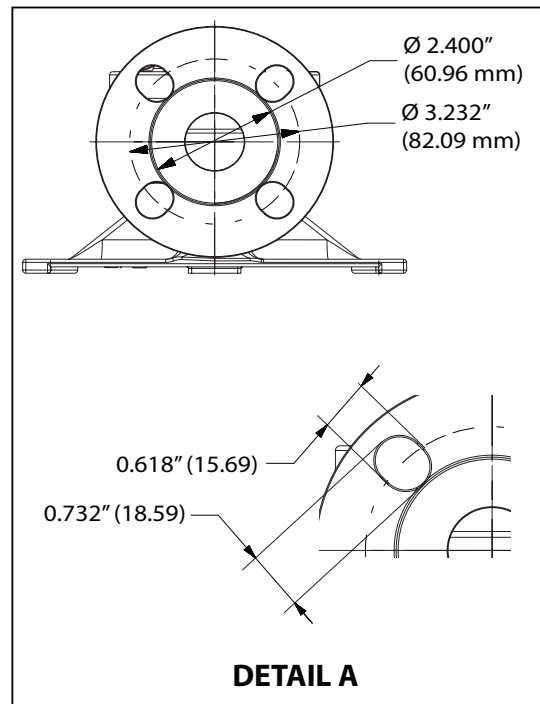
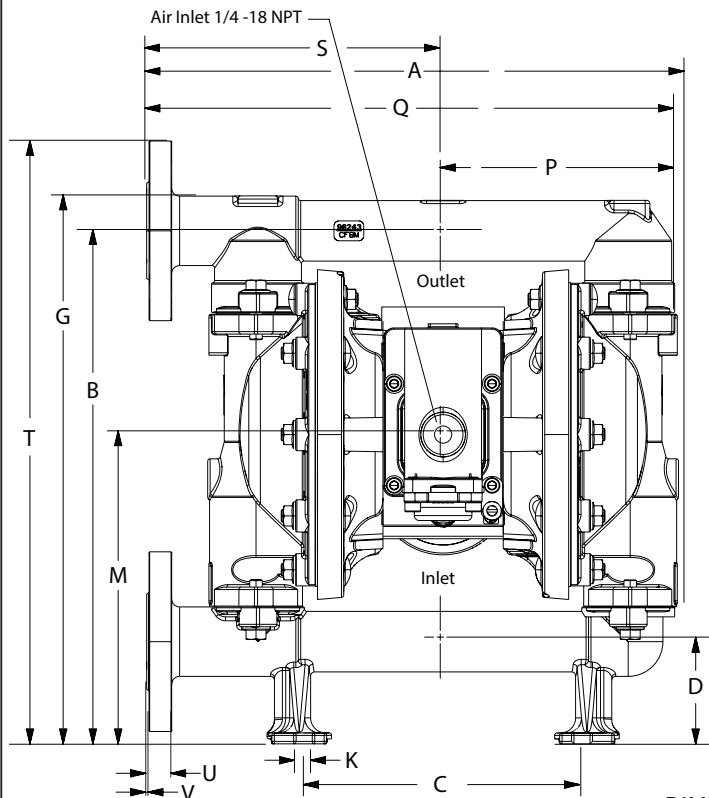
PUMP SUPPLY
INCORPORATED

DIMENSIONAL DATA

(Dimensions shown are for reference only, they are displayed in inches and millimeters (mm)).



PX10X-FXX-XXX



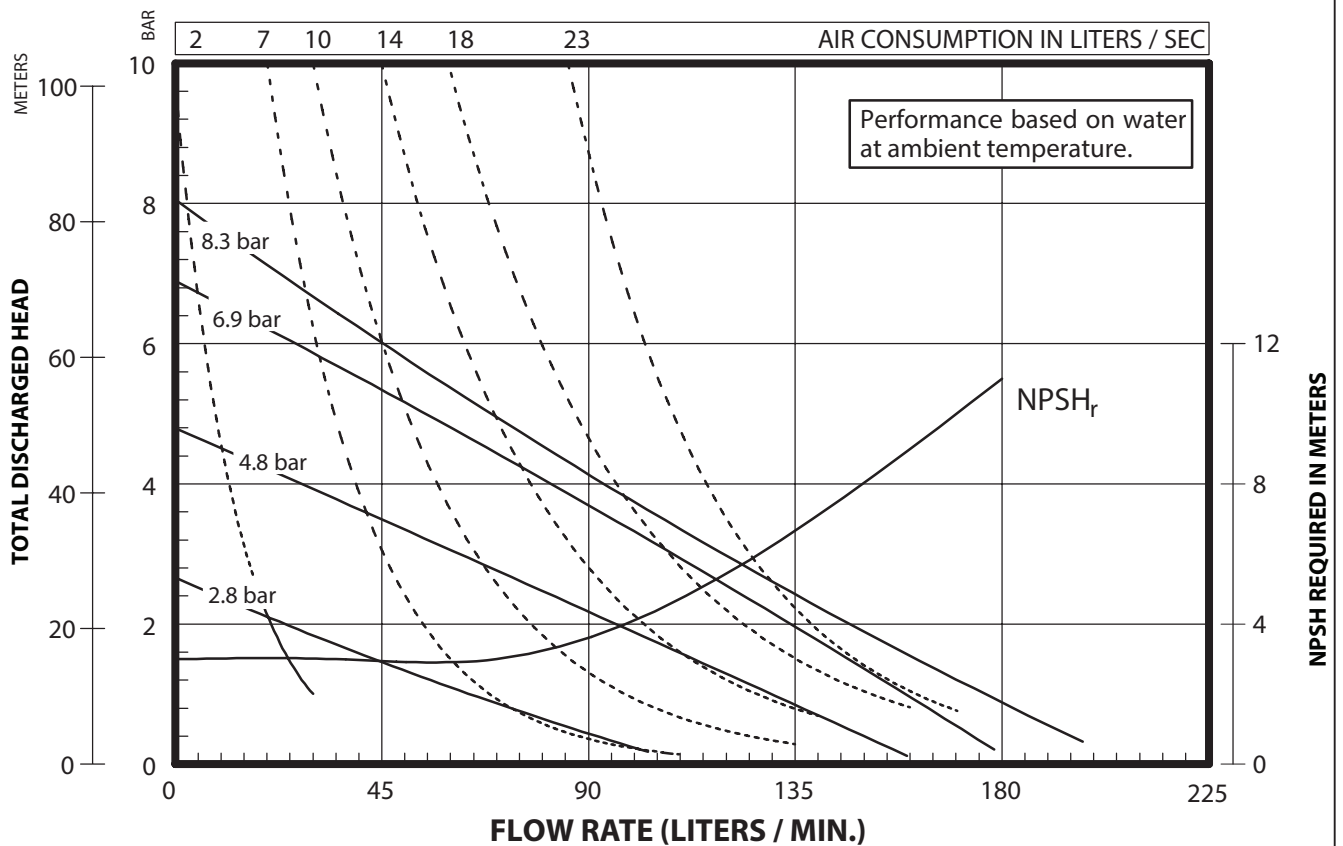
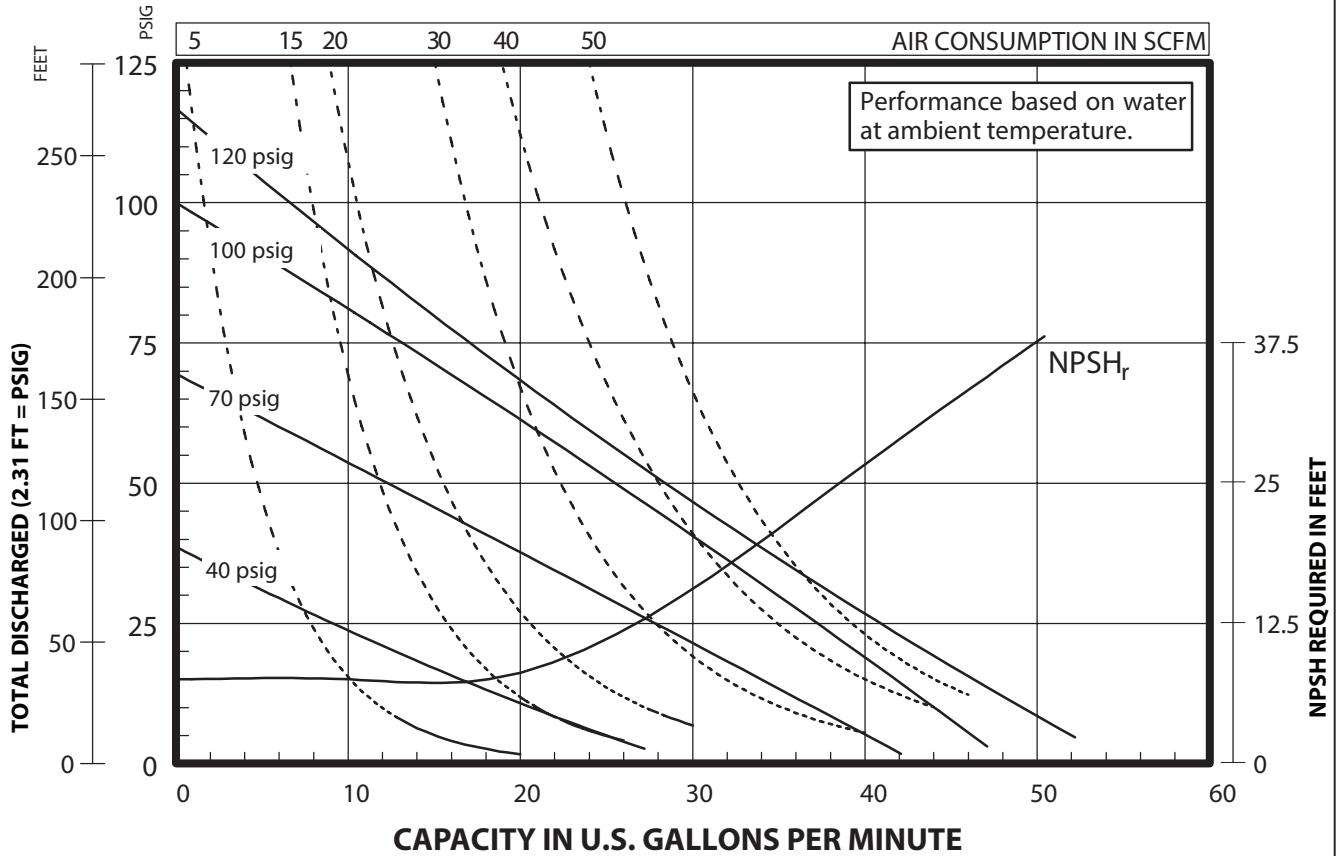
DIMENSIONS



A - 12.34" (313.4 mm)	E - see below	J - 7.31" (185.6 mm)	N - see below	PD10X-X / PE10X-X / PZ10X-X SERIES
B - 11.56" (293.6 mm)	F - see below	K - 0.4" (10.1 mm)	P - 5.84" (148.3 mm)	
C - 4" (101.6 mm)	G - 12.43" (315.7 mm)	L - 1.5" (38.1 mm)	Q - 12" (304.8 mm)	"N"
D - 1.25" (31.7 mm)	H - 6.25" (158.7 mm)	M - 6.46" (164.0 mm)	R - see below	"R"
	"E"	"F"	"R"	PX10X-XAX-XXX 0.25" (6.3 mm)
PX10A-XXX-XXX	-----	8.12" (206.2 mm)	14.03" (356.3 mm)	PX10X-XCX-XXX 0.28" (7.1 mm)
PX10R-XXX-XXX	11.09" (281.6 mm)	8.31" (211.0 mm)	-----	PX10X-XHX-XXX 0.28" (7.1 mm)
PX10S-XXX-XXX	-----	8.18" (207.7 mm)	13.84" (351.5 mm)	PX10X-XSX-XXX 0.28" (7.1 mm)
PX10X-FXX-XXX				
A - 13.37" (339.5 mm)	D - 2.57" (65.2 mm)	M - 7.79" (197.8 mm)	Q - 13.30" (337.8 mm)	T - 15.19" (385.8 mm)
B - 12.92" (328.1 mm)	G - 13.80" (350.5 mm)	N - 0.28" (7.1 mm)	R - 13.83" (351.2 mm)	U - 0.63" (16.0 mm)
C - 7" (177.8 mm)	K - 0.4" (10.1 mm)	P - 5.83" (148.0 mm)	S - 7.47" (187.9 mm)	V - 0.60" (15.2 mm)

PERFORMANCE CURVES

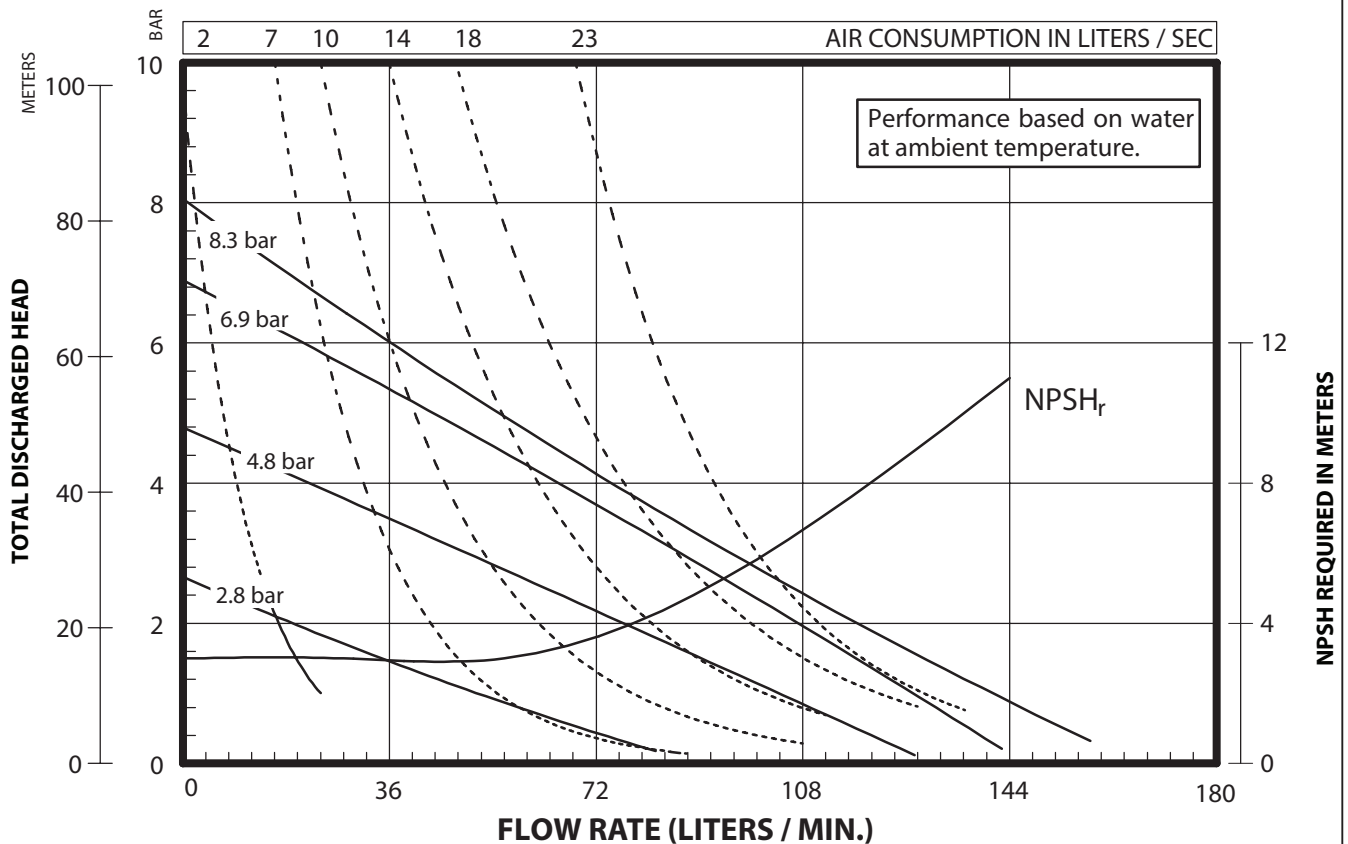
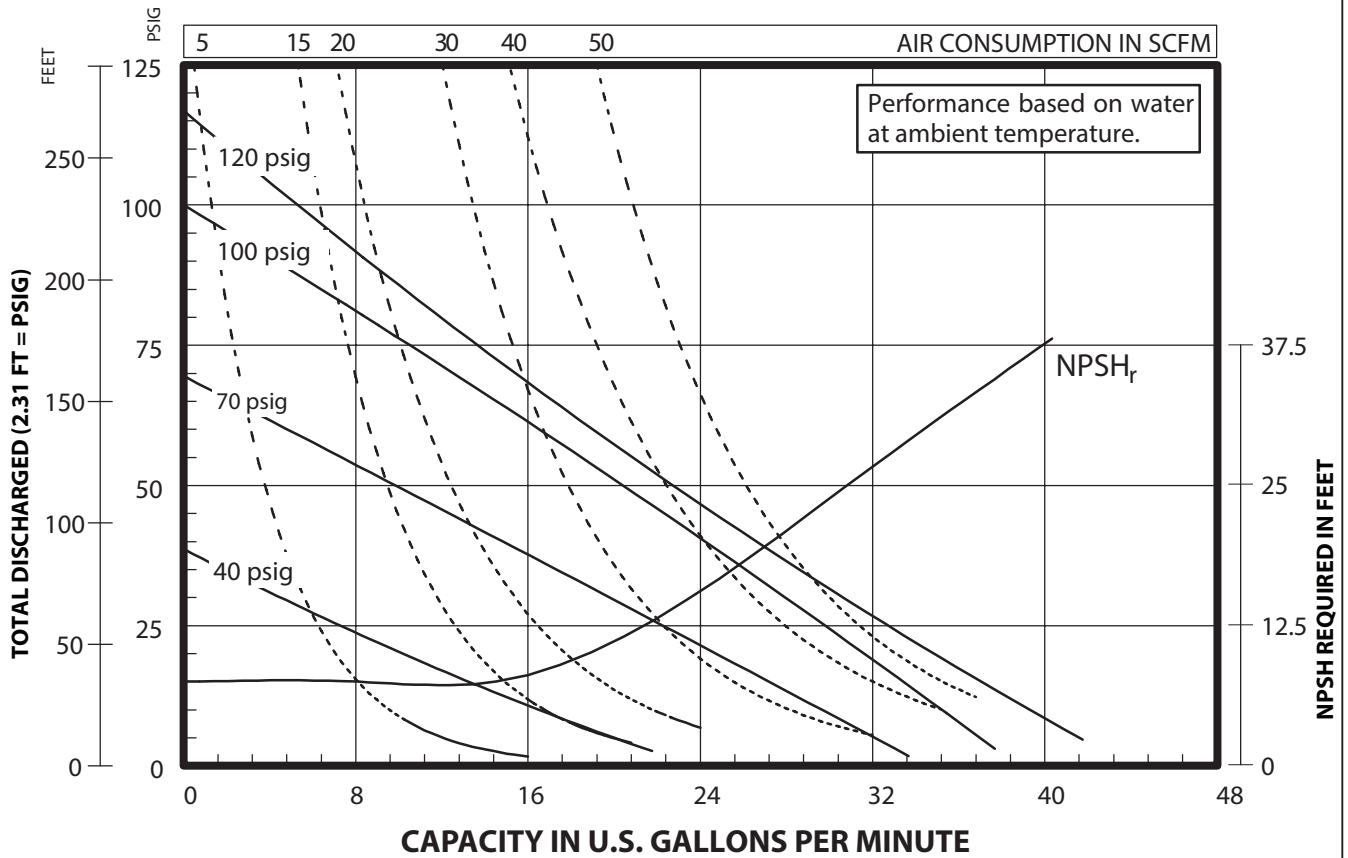
PX10X-XXX-XXX 1" METALLIC DIAPHRAGM PUMP



NOTE: Performance tested with 95845 Diaphragm Check Valve.

PERFORMANCE CURVES

PE10X-XXX-XXX-XXEX & PE10X-XXX-XXX-XXFX 1" METALLIC DIAPHRAGM PUMP



NOTE: Performance tested with 95845 Diaphragm Check Valve.