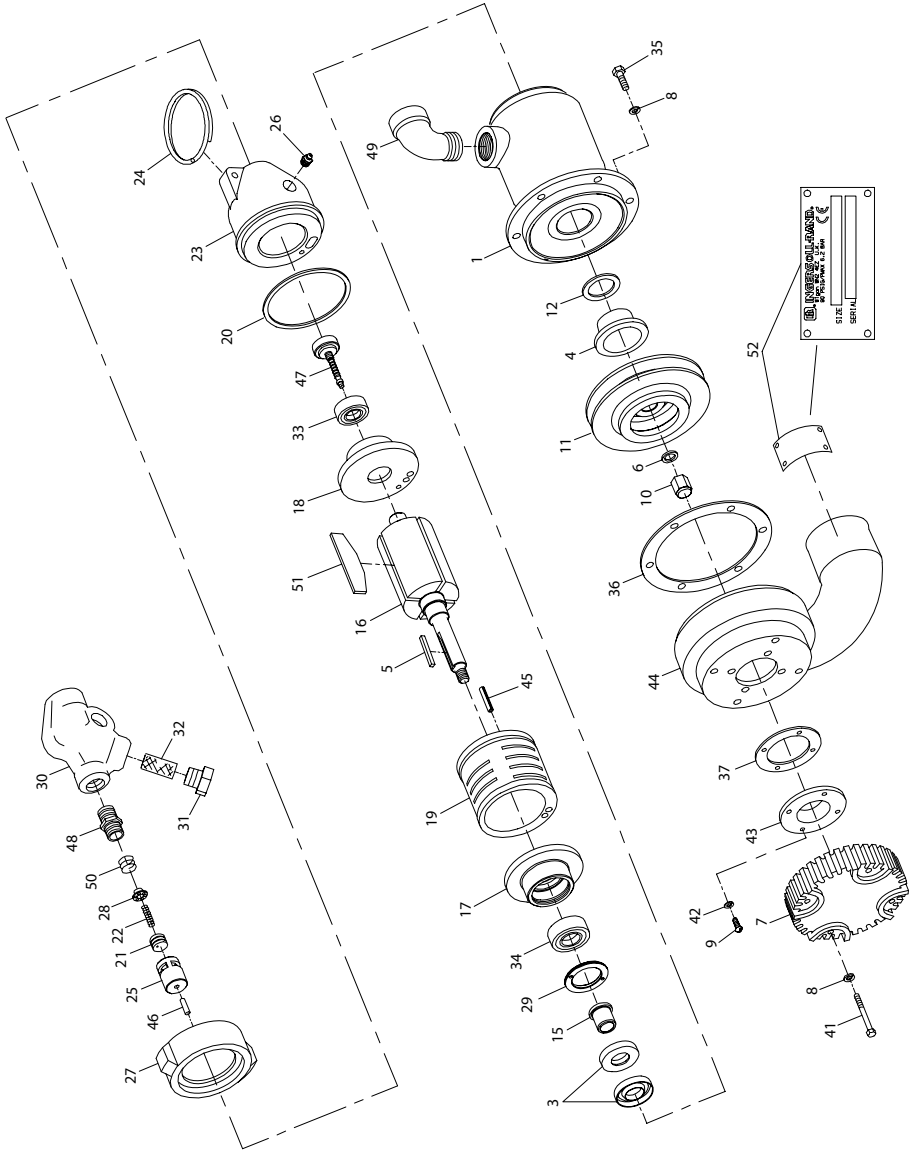


P35A1-EU Sump Pump- Exploded View



(Dwg. TPA1484)



16574840
Edition 3
February 2011

P35A1-EU Sump Pump- Parts List

Item	Part Description	Part Number	Item	Part Description	Part Number
1	Motor Housing Assembly	S35-40	27	Housing Nut	P35-282
• 3	Water Seal (2)	P35-153	28	Governor Valve Spring Seat	P25-418
4	Impeller Hub Bushing	S35-41	29	Bearing Retainer	S35-400
5	Impeller Key	P35-150	30	Air Strainer Assembly	S35-A267
6	Impeller Washer	P35-157	31	Air Strainer Cap	S35-268
7	Inlet	P25-148B	• 32	Air Strainer Screen	205-1061
8	Spring Washer (10)	D02-321	• 33	Rear Rotor Bearing	R5H-22
9	Suction Seal Capscrew (4)	P35-146	• 34	Front Rotor Bearing	S35-21
10	Impeller Nut	P25-142	35	Brass Bolt (6)	P35-114
• 11	Impeller	S35-143	36	Impeller Case Gasket	P35-113
• 12	Impeller Shim		• 37	Suction Seal Shim (as required)	
	0.005" (0.125 mm)	P35-151-5		0.003" (0.075 mm)	P35-145-3
	0.010" (0.250 mm)	P35-151-10		0.005" (0.125 mm)	P35-145-5
	0.025" (0.625 mm)	P35-151-25		0.015" (0.375 mm)	P35-145-15
15	Impeller Spacer	S35-152		0.031" (0.780 mm)	P35-145-31
16	Rotor	S35-53	41	Brass Bolt (4)	P35-117
• 17	Front End Plate	S35-11	42	Spring Washer (4)	L01-66
• 18	Rear End Plate	S35-12	43	Suction Seal	P35-144
• 19	Cylinder	S35-3	44	Impeller Case (2" NPT)	S35-112
20	Housing Gasket	P35-43	45	Cylinder Dowel	S35-98
21	Governor Valve	S35-425	46	Governor Valve Stem	S35-410
22	Governor Valve Spring	P35-431	47	Governor Assembly	S35-424
23	Backhead Assembly	S35-102	48	Air Strainer Nipple	P35-286
24	Handle	S35-227	49	Exhaust Elbow	P35-587
25	Governor Valve Bushing	S35-429	50	Seat Retaining Spring	H80-81B
26	Grease Fitting	P25-188	51	Vane Packet (set of 4 Vanes)	R5H-42-4
			52	Nameplate	P25-EU-99

• To keep downtime to a minimum, it is desirable to have on hand certain repair parts. We recommend that you stock one (pair or set) of each part indicated by a bullet (•) for every four tools in service.

Parts and Maintenance

When the life of the tool has expired, it is recommended that the tool be disassembled, degreased and parts be separated by material so that they can be recycled.

Tool repair and maintenance should only be carried out by an authorized Service Center.

Refer all communications to the nearest **Ingersoll Rand** Office or Distributor.

Related Documentation

For additional information refer to:

Air Sump Pumps Product Safety Information Manual 16576597,

Air Sump Pump Product Information Manual 04585162,

Air Sump Pump Maintenance Information Manual 16575466.

Manuals can be downloaded from www.ingersollrandproducts.com.



www.ingersollrandproducts.com

© 2011 **Ingersoll Rand**

16574840

Edition 3

February 2011