

**MP PUMPS MAX EB SERIES****MAX EB****INSTRUCTION BULLETIN  
MAX EB5**

Read this bulletin in full before installing, operating or servicing this pump.

**WARNING!**

**Do not perform service or maintenance when pumping system is pressurized or hot.**

**Do not operate the pump in a manner that it was not intended to be used.**

**Do not allow severe temperature changes to occur in a short time period within the pumping system**

**Do not mount pump in conditions that high piping loads exist on the pump flanges.**

**Do not continue to operate the pump when unusual noise or vibration occurs.**

**Illinois Location:**

(847) 841-7867  
860 Church Rd Elgin, IL 60123

**Minnesota Location:**

(651) 758-7867  
330 Mill Bay South Suite 1511  
Afton, MN 55001

PumpSupplyInc.com



# MP PUMPS MAX EB SERIES

## APPLICATION AND INSTALLATION INSTRUCTIONS

It is important that this Instruction Bulletin be read carefully to fully familiarize yourself with the pump assembly arrangement. The instructions contained herein pertain to installation and maintenance of the pump assembly only. Check unit carefully to make certain that no parts are missing or have been broken in shipment. Any questions call 800-563-8006 or visit [mppumps.com](http://mppumps.com)

### INSTALLATION

#### PIPING/MOUNTING

Pump must be mounted in a vertical shaft position.

Pipe thread sealing compound must be used on the NPT flanges that is compatible with the operating fluid and is rated for the temperature requirements

Pipe or hose of the same size (or larger) as inlet and outlet NPT should be used on the installation. When using pipe use long radius elbows wherever possible.

#### ELECTRICAL

Follow the wiring diagram found on or near the electric motor name plate for the desired voltage of the system.

### START-UP

Check for proper shaft rotation by jogging the power and observing the impeller rotation. Correct rotation arrows are provided on the pump housing.

Fill pumping system with fluid before start-up. This line of product will not handle air and therefore all air must be displaced from the suction line and pump before the pump can operate.

### OPERATION

Any system leak should be repaired immediately.

Ideal mechanical seal life is 20,000 hours. Reduced seal life may be experienced from extreme conditions.

The mechanical seal in the pump must not be operated dry

### DISSASSEMBLY

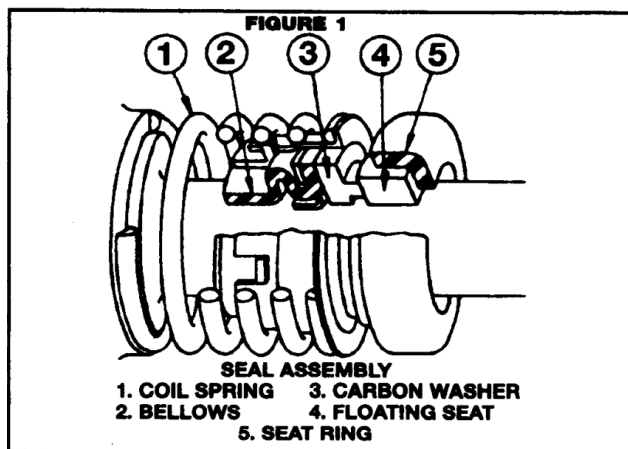
Drain the system of liquid. If removing the pump from the system break the suction and discharge unions.

Remove the fasteners holding the pump to the adapter. Pull the housing away from the adapter carefully to avoid tearing gaskets.

To disassemble the impeller, hold the end of the motor shaft. It may be necessary to remove the rain cap and end bell. Unscrew the seal bolt in the impeller eye. Remove the washer and gasket. Slide the impeller off of the electric motor shaft.

Once disassembled check the impeller and other wear items for unusual wear. Replace if necessary.

Inspect the lapped seal faces (part 3 & 4). If chipped or scored replace entire seal. Inspect elastomer bellows (part 2 & 5) for rips, tears or deterioration. To disassemble apply a clean light oil to the impeller sleeve and slide the bellow washer and spring off the impeller sleeve.



#### Illinois Location:

(847) 841-7867

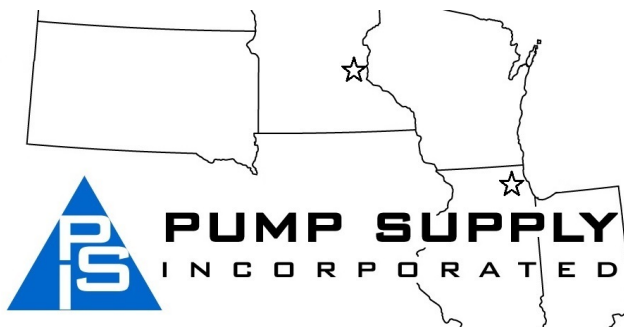
860 Church Rd Elgin, IL 60123

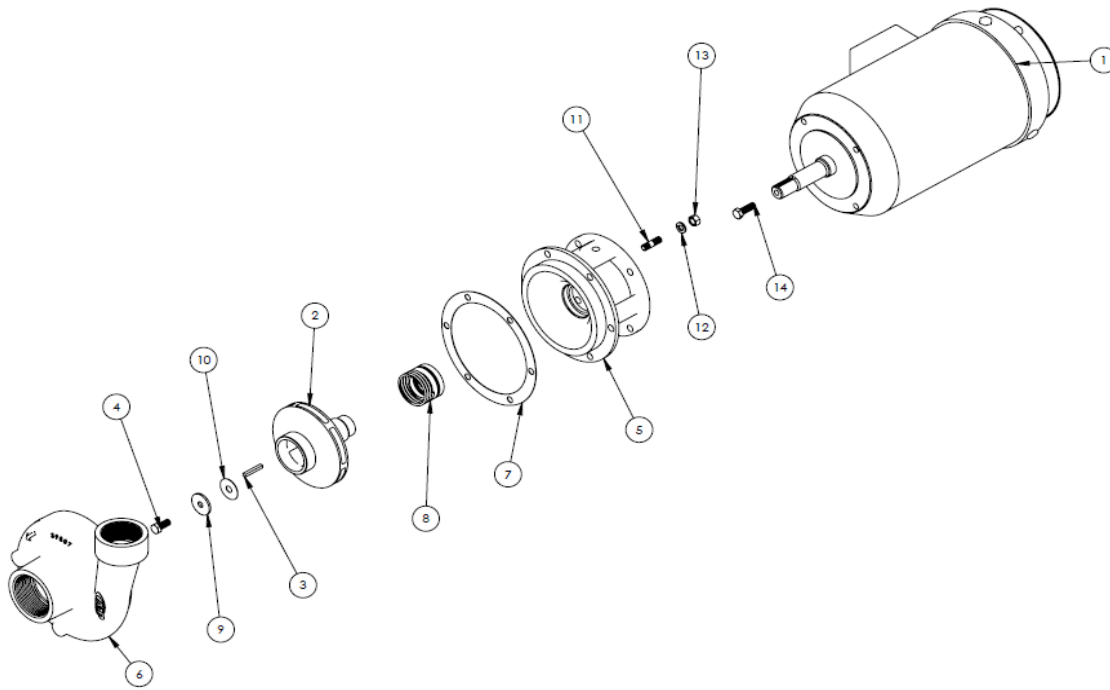
#### Minnesota Location:

(651) 758-7867

330 Mill Bay South Suite 1511  
Afton, MN 55001

[PumpSupplyInc.com](http://PumpSupplyInc.com)





ITEM NO.	PART NUMBER	DESCRIPTION	MATERIAL	QTY.
1	39812	EL MTR:5-3	----	1
2	39810	IMP MACH:Ø5.37	304 STAINLESS STEEL	1
3	26588	SQUARE KEY	STEEL	1
4	26589	SEAL BOLT	304 STAINLESS STEEL	1
5	39811	ADAPTER	CAST IRON	1
6	39808	HSG MACH	CAST IRON	1
7	25662	GASKET	KLINGERSIL	1
8	22362	SEAL ASSEMBLY	CCS/VITON	1
9	26590	SEAL WASHER	316 STAINLESS STEEL	1
10	26591	GASKET	TEFLON	1
11	21260	STUD 3/8-16X1.32	304 STAINLESS STEEL	6
12	21266	LOCKWASHER 3/8 X 1/8	304 STAINLESS STEEL	6
13	21268	HEXNUT 3/8-16	304 STAINLESS STEEL	6
14	21291	CAPSCREW 3/8-16X1.13	304 STAINLESS STEEL	4

**ASSEMBLY INSTRUCTIONS**

If needed assemble the adapter onto the electric motor using the 4 capscrews and tighten evenly

Clean the inner bore of the adapter with a fine Emory cloth if needed. Lubricate the bore and seal seat bellow (part 5 of Figure 1) with a light oil. Press (do not drive) the seat into the adapter counter bore seating it firmly and squarely. Inspect and clean the lapped sealing surface. This can be done prior to the previous step.

**Illinois Location:**  
 (847) 841-7867  
 860 Church Rd Elgin, IL 60123

**Minnesota Location:**  
 (651) 758-7867  
 330 Mill Bay South Suite 1511  
 Afton, MN 55001

PumpSupplyInc.com



## MP PUMPS MAX EB SERIES ASSEMBLY INSTRUCTION CONT.

Inspect and clean the sealing face of the carbon washer (part 3 of Figure 1). Polish the impeller sleeve with a fine Emory cloth or crocus cloth. Place the spring (part 1) over the impeller sleeve until it shoulders with the back side of the impeller. Lubricate the inside of the washer and bellows assembly (Part 2 &3) with a clean light oil and slide it onto the impeller sleeve until it clears the chamfer.

Slide the seal bellows and washer assembly onto the electric impeller sleeve. Push the seal down over the shaft careful to not tear the bellows.

Place the shaft key in the designated slot on the electric motor shaft. Align the keyslot on the impeller with the key on the motor shaft and slide the impeller over the shaft until it shoulders.

Set the teflon gasket on the impeller eye followed by the steel washer. Tighten the seal bolt until the impeller shoulders with the motor shaft. It may be necessary to hold the electric motor shaft.

Place the gasket over the housing careful to not tear the gasket. Assemble the housing onto the adapter with the lock washers and hexnuts. Tighten Evenly.

**Illinois Location:**

(847) 841-7867

860 Church Rd Elgin, IL 60123

**Minnesota Location:**

(651) 758-7867

330 Mill Bay South Suite 1511  
Afton, MN 55001

PumpSupplyInc.com



**Illinois Location:**

(847) 841-7867  
860 Church Rd Elgin, IL 60123

**Minnesota Location:**

(651) 758-7867  
330 Mill Bay South Suite 1511  
Afton, MN 55001

[PumpSupplyInc.com](http://PumpSupplyInc.com)

