



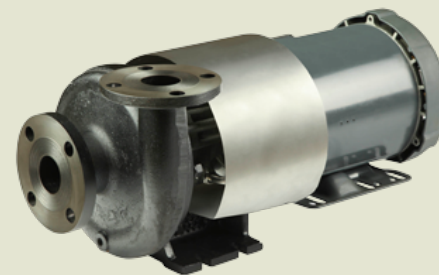
HTW 80

1 1/2 x 1 1/4 End Suction Centrifugal Hot Water Pump

The HTW 80 is a patented, unique centrifugal pump specifically designed for high temperature process manufacturing applications using hot water, ethylene glycol, propylene glycol and triethylene glycol. The Tempuflo HTW Series utilizes an isolated seal chamber, which is effectively cooled by both a cooling loop (heat exchanger) and by a fan clamp which couples the unit to the shaft of a standard NEMA C Face frame motor.

The isolator technology combined with the heat exchanger allows the seal cavity to reach a maximum and seal chamber temperature of 170°F (77°C) while the process temperature is at 400°F (204°C). This lower seal temperature greatly increases seal life, which means less down time for the end user.

Discharge port location can be provided as either Horizontal or Vertical position.



Application

- Industrial
- OEM

SPECIFICATIONS:

Suction And Discharge	1-1/2" x 1-1/4" NPT or flat flange option
Materials Of Construction	Ductile iron
Flow	Up to 80 GPM
Head Feet	Up to 127'
Impeller	5.9" steel, enclosed
Drive Options	Close coupled 56C, Close coupled 145TC, Pedestal, PumPAK® (without motor)
Seal	Carbon / silicon carbide / Viton

Illinois Location:

(847) 841-7867

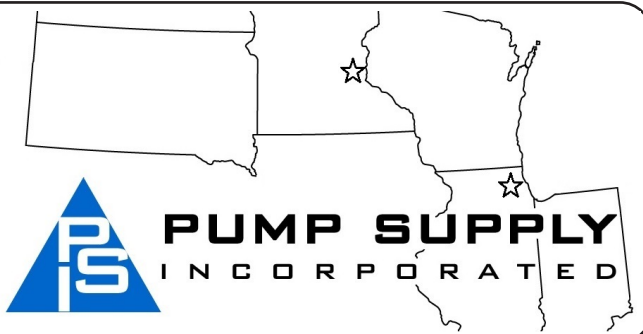
860 Church Rd Elgin, IL 60120

Minnesota Location:

(651) 758-7867

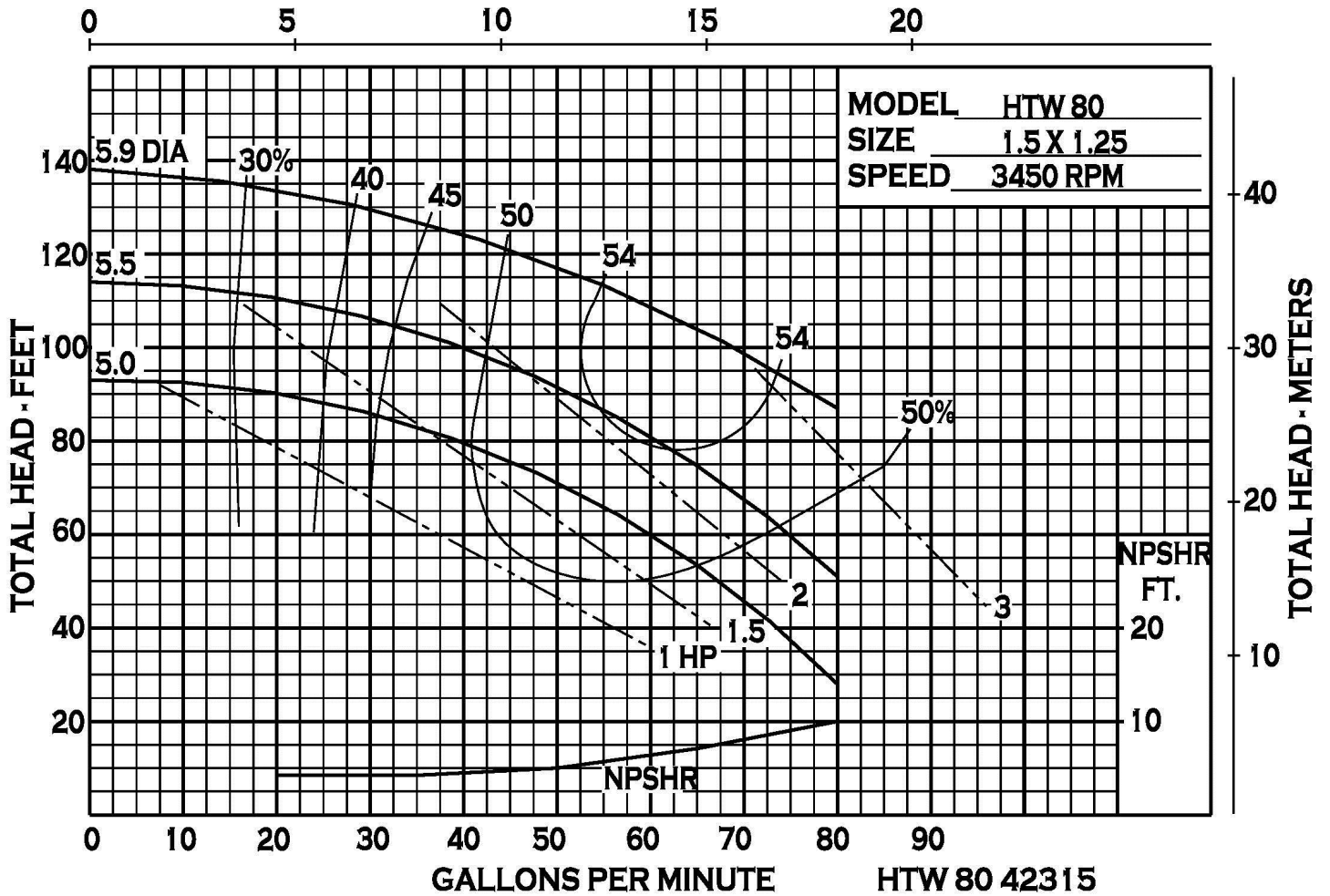
330 Mill Bay South Suite :
Afton, MN 55001

PumpSupplyInc.com



HTW 80


CUBIC METERS PER HOUR



Illinois Location:
 (847) 841-7867
 860 Church Rd Elgin, IL 61120

Minnesota Location:
 (651) 758-7867
 330 Mill Bay South Suite
 Afton, MN 55001

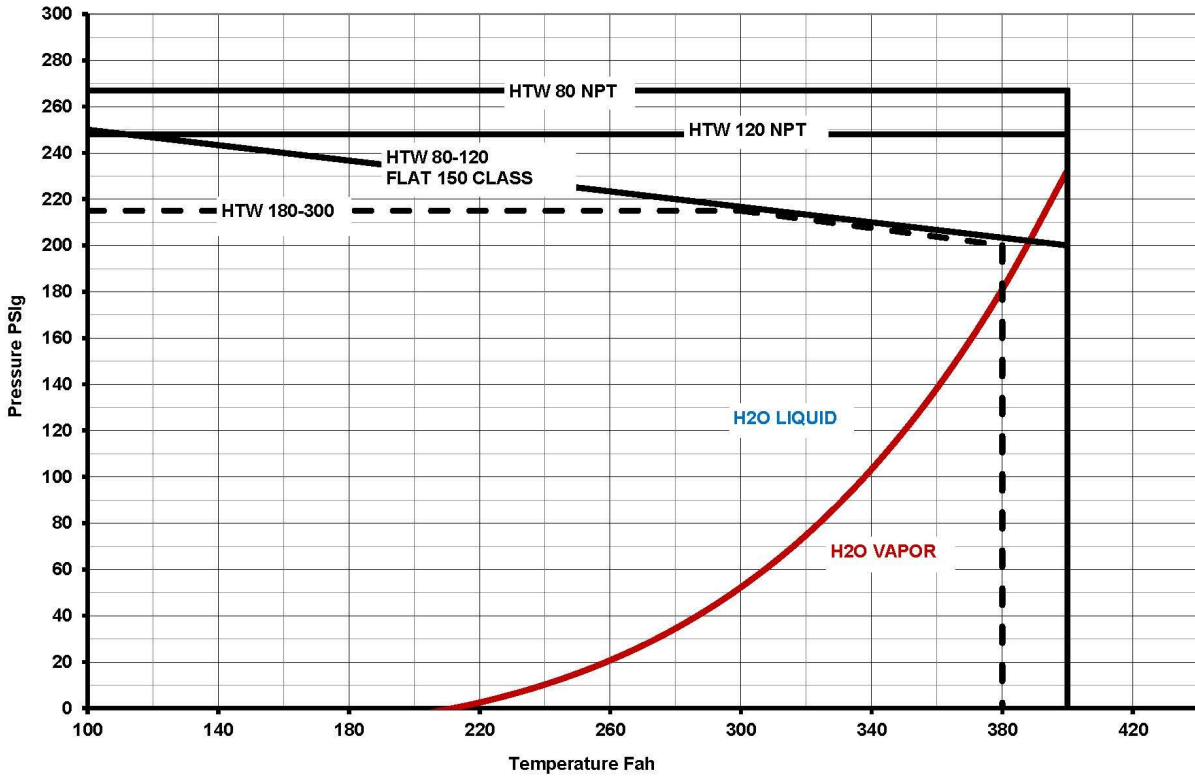
PumpSupplyInc.com



PS
PUMP SUPPLY
 INCORPORATED





HTW Pressure Temperature Limits



Illinois Location:
 (847) 841-7867
 860 Church Rd Elgin, IL 61

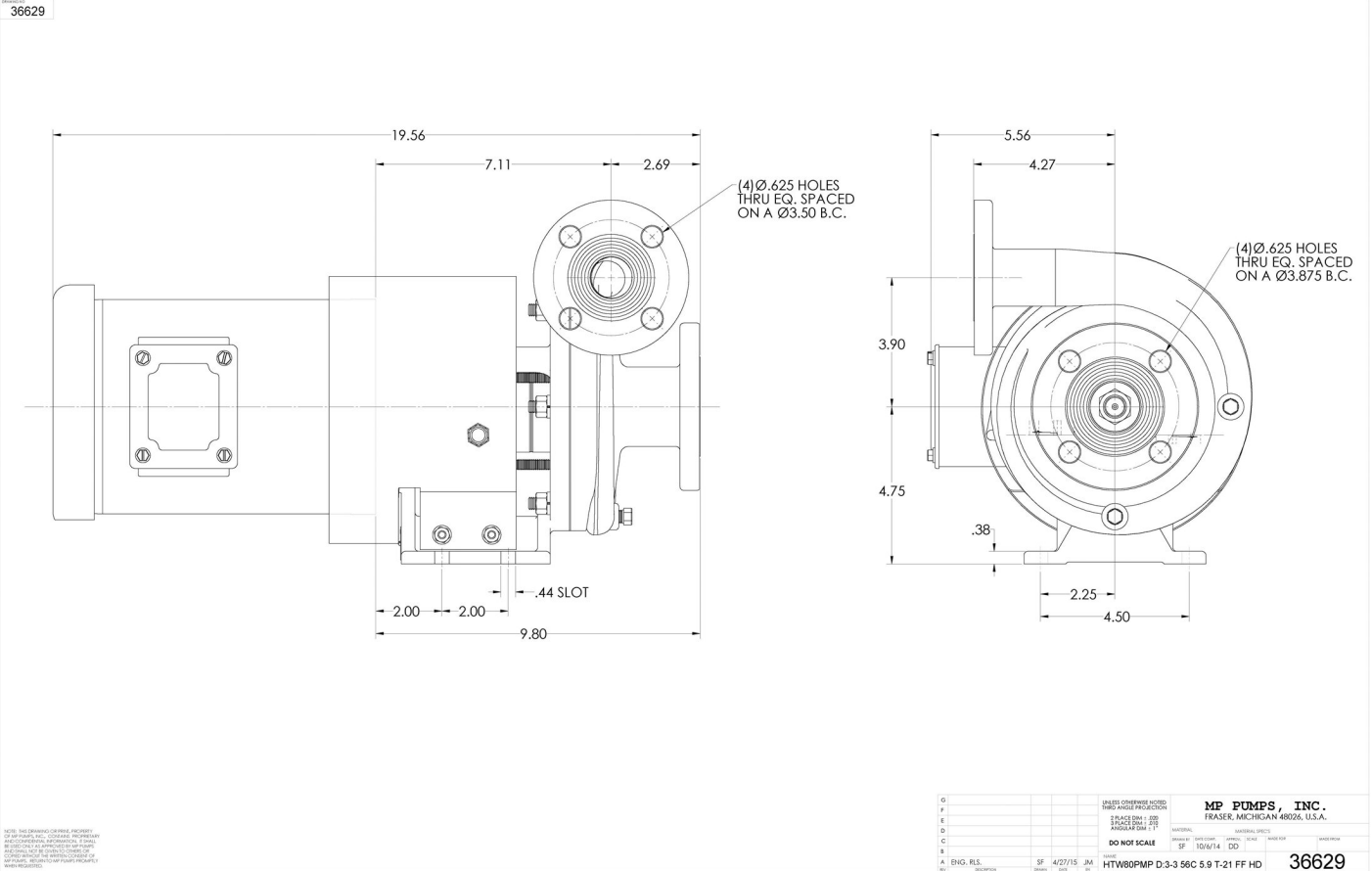
Minnesota Location:
 (651) 758-7867
 330 Mill Bay South Suite
 Afton, MN 55001

PumpSupplyInc.com

PUMP SUPPLY
INCORPORATED





Illinois Location:
 (847) 841-7867
 860 Church Rd Elgin, IL 61

Minnesota Location:
 (651) 758-7867
 330 Mill Bay South Suite
 Afton, MN 55001

PumpSupplyInc.com

PUMP SUPPLY
 INCORPORATED



36629

ITEM NO.	PART NUMBER	DESCRIPTION	MATERIAL	QTY.
1	31871	HOUSING	DUCTILE IRON	1
2	22655	HEX JAM NUT 5/8-18	304 STAINLESS STEEL	1
3	25910	IMPELLER	STEEL	1
4	35558	GASKET	KLINGERSIL	1
5	29715	O RING AS 568-162	VITON	1
6	36624	ADAPTOR	DUCTILE IRON	1
7	21261	STUD 3/8-16X1.63	304 STAINLESS STEEL	6
8	21266	LOCKWASHER 3/8 X 1/8	304 STAINLESS STEEL	6
9	21268	HEXNUT 3/8-16	304 STAINLESS STEEL	6
10	41259	CAPSCREW 3/8-16X1.75	STEEL	4
11	21183	NAME PLATE	ALUMINUM	1
12	21122	DRIVE SCREW	STAINLESS STEEL	2
13	29230	O-RING 1.301ID X .070	VITON	1
14	29158	ISOLATOR	CG	2
15	35559	GASKET	KLINGERSIL	3
16	29166	DRIVE SLEEVE	303 STAINLESS STEEL	1
17	21241	HEXNUT 1/4-20	304 STAINLESS STEEL	2
18	36640	SHEILD	STEEL	1
19	21585	PIPE PLUG 1/8 NPT	ZPS	2
20	33417	SET SCREW 1/4-28X1/2	STEEL	1
21	29168	SEAL ASSEMBLY	CARBIC	1
22	36633	HOUSING SEAL	DUCTILE IRON	1
23	36645	ADP FITTING	304 STAINLESS STEEL	2
24	29765	WASHER FLAT .50X.327X.093	STEEL	3
25	29178	CAPSCREW 5/16-18X2.0	STEEL	3
26	29164	CLAMP FAN	DUCTILE IRON	1
27	36641	HE COIL	304 STAINLESS STEEL	1
28	26197	ELECTRIC MOTOR 3HP, 3PH, 56C	STD.	1
29	27261	WASHER	STEEL	4
30	33563	CAPSCREW 1/4-20X1	304 STAINLESS STEEL	2

NOTE: THE DRAWING OR PART NUMBER IS THE PROPERTY OF THE DRAWING OR PART NUMBER. IT IS TO BE KEPT CONFIDENTIAL AND NOT TO BE REPRODUCED OR COPIED IN ANY MANNER WITHOUT THE WRITTEN PERMISSION OF THE DRAWING OR PART NUMBER. THE DRAWING OR PART NUMBER IS THE PROPERTY OF THE DRAWING OR PART NUMBER.

MP PUMPS, INC.
FRASER, MINNESOTA, U.S.A.

DATE: 4/27/15
SCALE: 1:1
HTW80PMP D-3-3 56C 5.9 T-21 FF HD

36629

Illinois Location:
(847) 841-7867
860 Church Rd Elgin, IL 61

Minnesota Location:
(651) 758-7867
330 Mill Bay South Suite
Afton, MN 55001

PumpSupplyInc.com

PUMP SUPPLY
INCORPORATED

