



Griffco Valve Inc.
 6010 N. Bailey Ave., Ste 1B
 Amherst, NY 14226 USA
 Phone: +1 716 835-0891
 Fax: +1 716 835-0893
sales@griffcovalve.com
www.griffcovalve.com

M-SERIES PRESSURE RELIEF VALVES



Griffco M-Series diaphragm pressure relief valves are designed to protect chemical feed systems from over pressure damage caused by defective equipment or a blockage in the chemical feed line. Robust construction ensures reliability in the rigorous service of municipal and industrial applications. Wetted materials include: **PVC, CPVC, PP, PVDF, PTFE, Halar, 316 SS, A20 and Hastelloy C.** Available sizes: 1/4", 3/8", and 1/2".

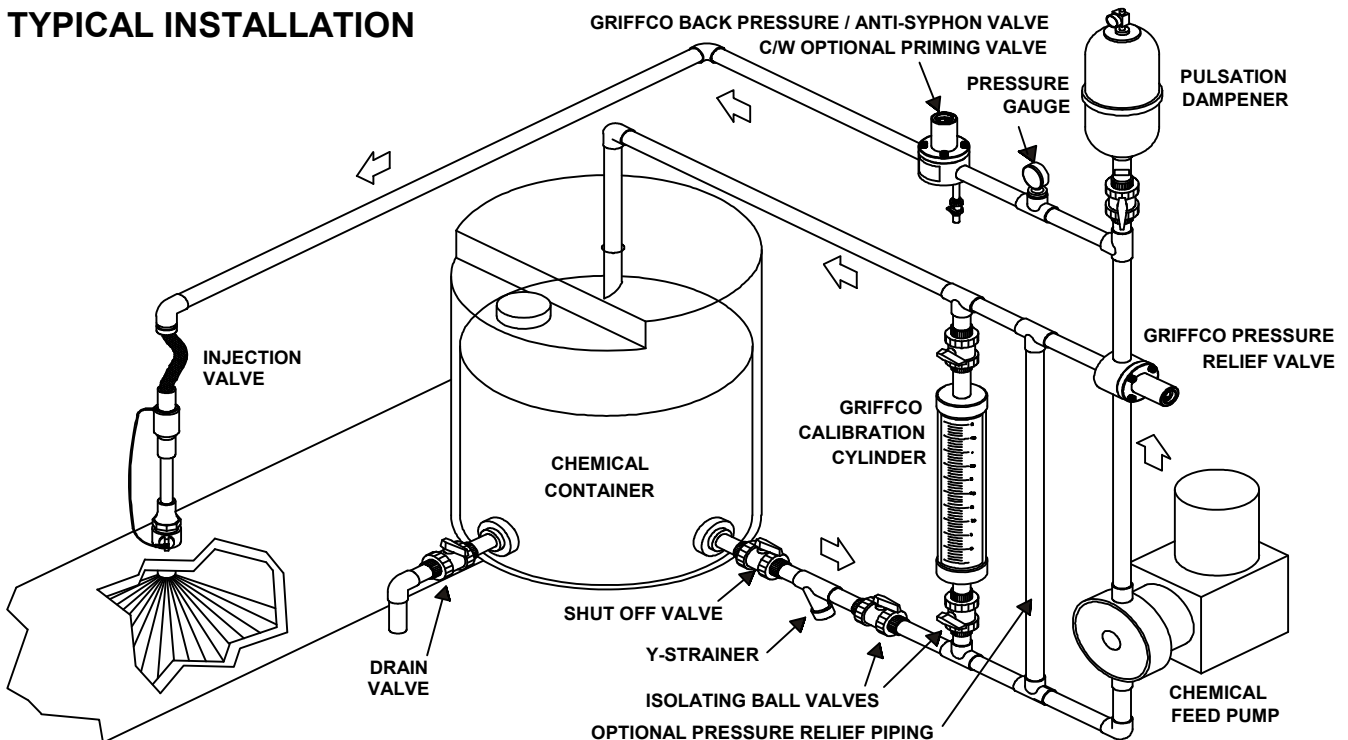
Features:

- Molded Noryl Top
- High Reliability / Low Cost
- Compact Size for OEM Applications
- Adjustable Pressure Settings
- Optional 350 PSI Rated Valve
- 3 Port, 2 Port, & 90° Configuration
- Robust, Machined Body Construction
- Multiple Diaphragm Materials
- Wide Range of Valve Materials

Operation:

Griffco diaphragm pressure relief valves operate when the pressure in the chemical system exceeds the pressure in the chemical system exceeds the preset pressure of the valve. The diaphragm is held against the valve seat by an internal spring. When the preset pressure is exceeded the diaphragm is forced up and the chemical flows out the relief port, back to the chemical tank or to the suction side of the pump. The valves are pre-set at 50 psi, however they are field adjustable from 10 - 150 psi, via the adjustment screw. The relief valve should be set approximately 15 psi higher than the system pressure. Installation should be made as close to the pump as possible, without any valves or accessories between the relief valve and the pump. Consult your pump manufacturer for their recommendations.

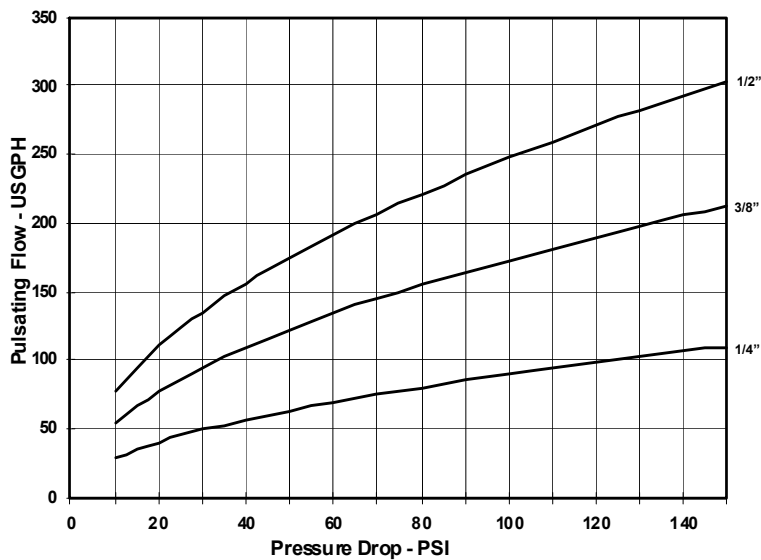
TYPICAL INSTALLATION



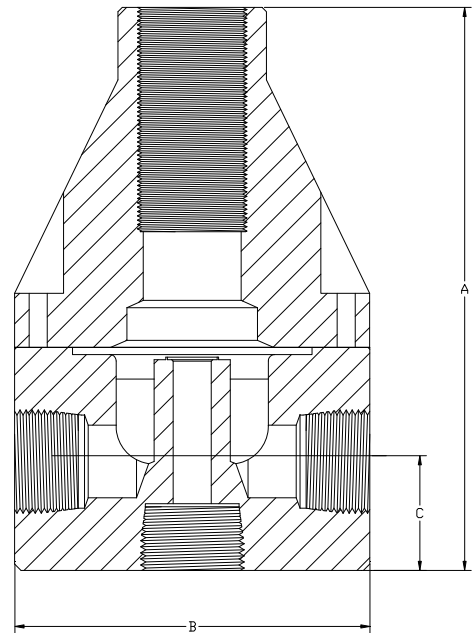
Technical Data:

Sizes: PRM		1/4", 3/8", 1/2"			
Connections:		NPT, Socket, Union, Flanged			
Pressure Adjustment		Standard 10 - 150 psi, Optional: 0 - 50 psi, 10 - 250 psi, 50 - 350 psi			
Flow Rates @ 150 psi		Shipping Weight: lbs			
Size	Pulsating	Continuous	Plastic	Metal / Plastic Top	Metal / Metal Top
1/4"	100 USgph	5 USgpm	1.0	2.5	3.0
3/8"	200 USgph	10 USgpm	1.0	2.5	3.0
1/2"	300 USgph	15 USgpm	1.0	3.0	3.5
Max Temperature: (°F)		PVC: 140°; CPVC & PP: 195°; PTFE & PVDF & Metal: 300°, (Peak 390°)			
Max Operating Pressure @ 70°F: (psi)		Plastic/Noryl: 375 psi, Metal /Metal: 2000 psi			
Materials of Construction:					
Diaphragm		PTFE / EPDM, Optional: Viton, Hypalon, Nitrile, PTFE / Viton			
Valve Top		Standard: Noryl, Optional: 316 SS L			
Valve Body		PVC, CPVC, PP, PTFE, PVDF, 316 SS L, A 20, Hast. C, Others on Request			

Performance Curves:



Dimensions:



Product Codes For Ordering:

PRM	<input type="checkbox"/>	<input type="checkbox"/>	<input type="checkbox"/>	<input type="checkbox"/>	<input type="checkbox"/>
PRM2 (2 port)	1	2	3	4	
1 = Size	2 = Material	3 = Spring Opt	4 = Options		
025 - 1/4"	P - PVC	Blank - 10-150 psi	Blank - NPT & PTFE/EPDM		
038 - 3/8"	CP - CPVC	1 - 0 - 50 psi	V - Viton Diaphragm		
050 - 1/2"	PP - Polypro	2 - 10 - 250 psi	TV - PTFE/Viton Diaph.		
	T - PTFE		S - Socket Connection		
	K - PVDF	<i>For 50 - 350 psi</i>	F - Flange Connection		
	H - Halar	<i>spring use option</i>	U - Union Connection		
	S - 316 SS	<i>code "MSS"</i>	OSS - 316 SS L Top		
	A - Alloy 20		MSS - 50-350 psi 316SSL Top		
	C - Hastelloy C		AR - Priming Valve		
			90 - 90° Configuration		

DIMENSIONS: PRM - Series			
All Materials		(Orifice size = 0.312)	
Size	A (in.)	B (in.)	C (in.)
1/4"	3.550	2.350	0.750
3/8"	3.550	2.350	0.750
1/2"	4.250	2.350	1.080

Note: For Optional 2-Port pressure relief valve put "2" after PRG
 Note: Option MSS is only for use on 316SS, A20, & Hast C Valves.