

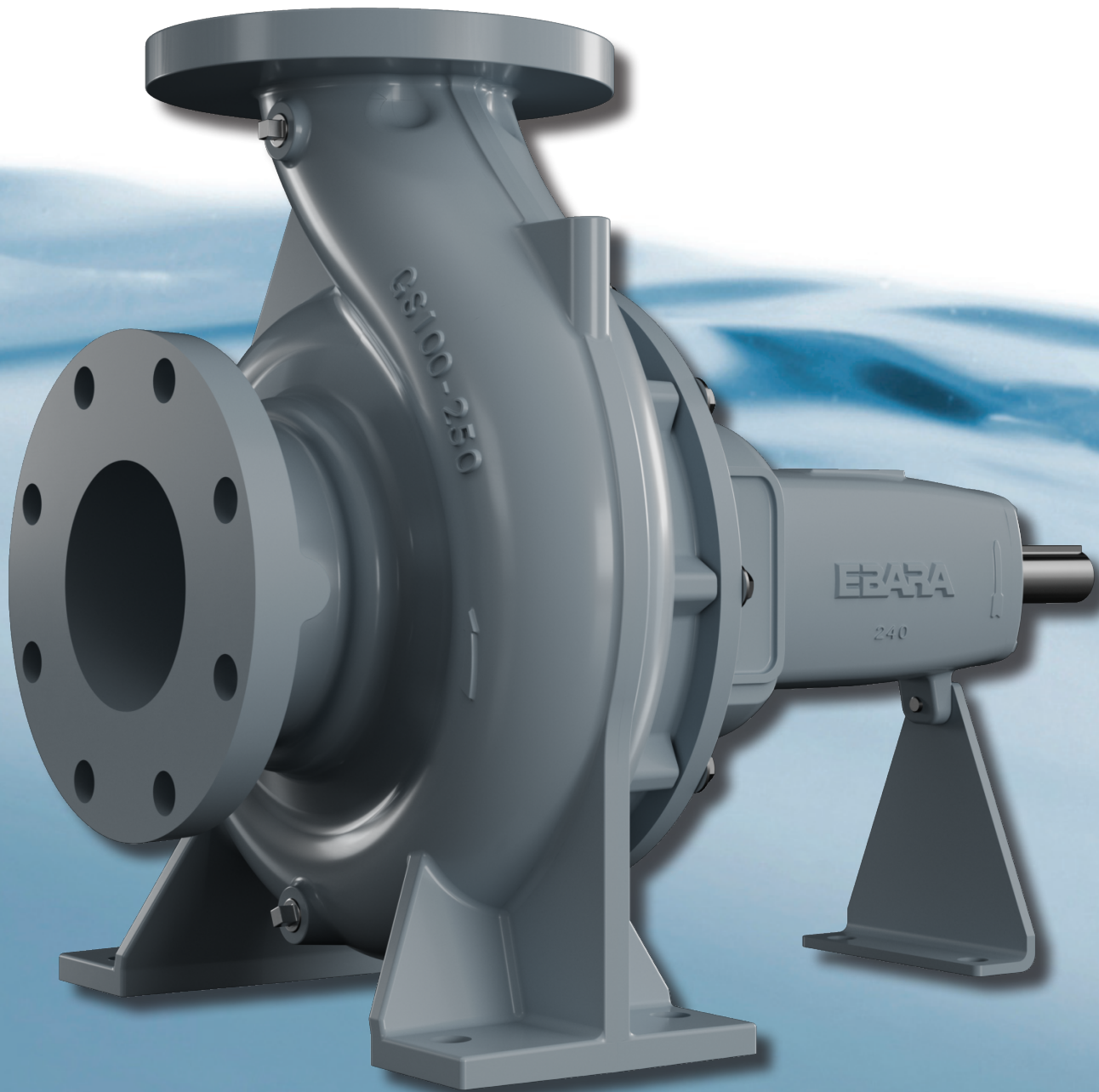


EBARA

Ahead  *Beyond*

Model GSU

End Suction Centrifugal Pump



Model GSU



Features

WEAR RINGS

To ensure a long service life and provide highest hydraulic efficiency in the market, GSU includes Stainless Steel replaceable wear rings as standard

ENERGY-SAVING DESIGN

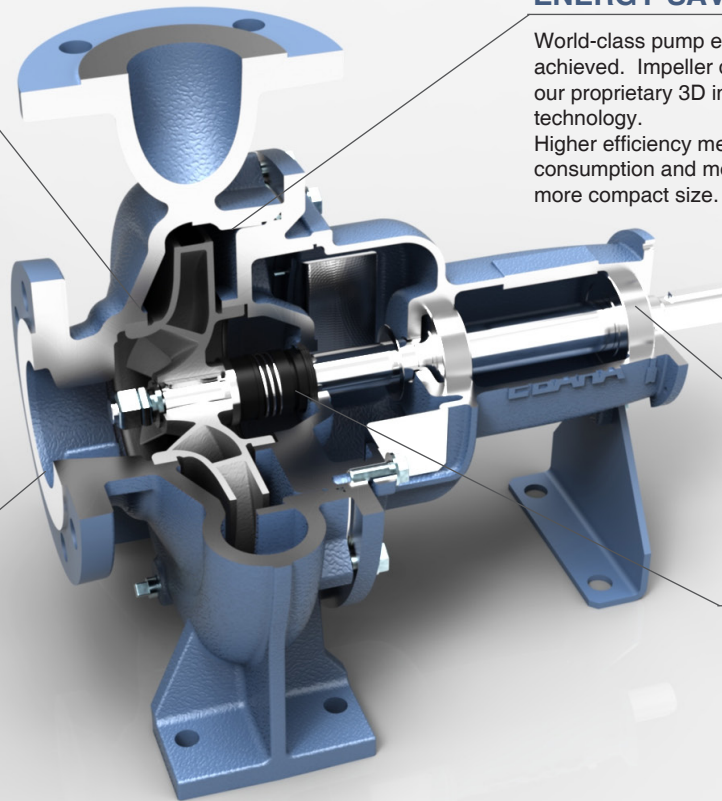
World-class pump efficiency achieved. Impeller designed using our proprietary 3D inverse design technology. Higher efficiency means lower energy consumption and motor output, and more compact size.

SIMPLE MAINTENANCE

Shielded bearings eliminate the need for adding or exchanging lubricating oil. Environmentally friendly.

STANDARDS

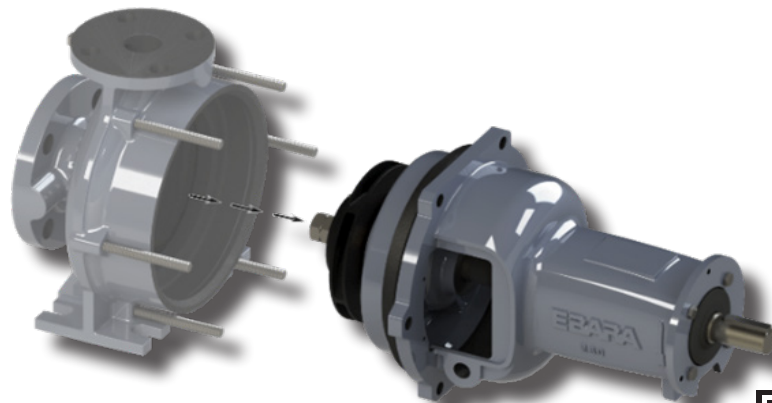
Pump dimensions comply with EN733. Flanges are ANSI B16.1 allowing GSU pumps to be suitable for demanding applications



Mechanical seals enable easy assembly. Does not require flushing and quenching for standard application.



Back pull out structure enables disassembly and inspection without removal of suction and discharge piping.



Detailed performance and technical data available at www.pumpsebara.com/product/gs/



EBARA

EBARA Pumps Americas Corporation

www.pumpsebara.com

IL - (847) 841-7867

PumpSupplyInc.com

MN - (651) 758-7867

Model GSU

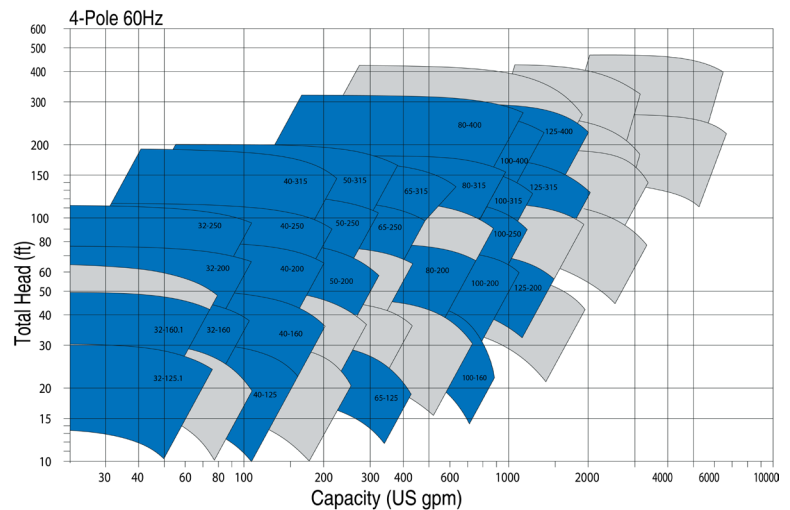
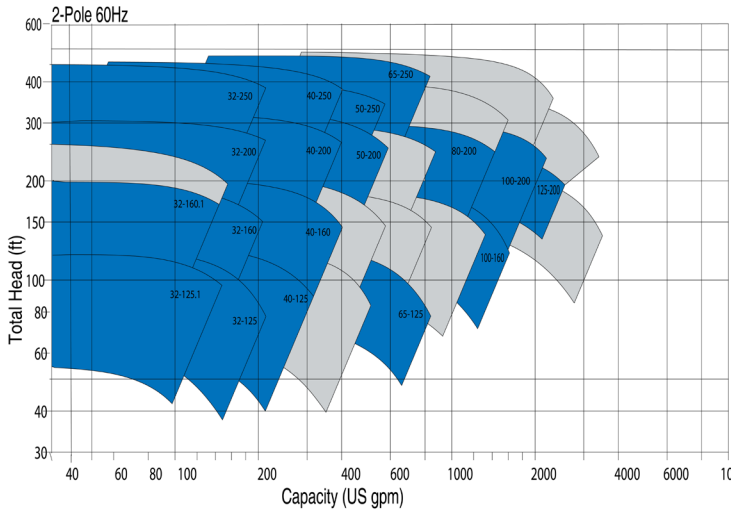
Standard Specifications

	Standard*	Optional**
Frequency	60Hz	50Hz
Operational speed	2 Pole 4 Pole	6 Pole
Phase	3 Phase	1 Phase
Voltage	230/460	575V, 190/380V
Enclosure	TEFC	ODP, Washdown, Explosion Proof, Other
Motor standards	NEMA T/TS	
Power Range	0.5 hp to 150 hp	
Discharge Size	1 1/4" to 5"	
Capacity	Up to 2,600 gpm (60Hz)	
Liquid temperatures	14°F to 212°F (-10°C to 100°C)	
Max working pressure	Up to 200psi (13.8Bar)	
Materials	Casing: Cast Iron	
	Impeller: Cast Iron	
Pump standards	ANSI B16.1 - 125lb Flanges; EN733	
Rotation	Clockwise viewed from coupling end	

* Standard Accessories: Common Base, Coupling, & coupling guard.

** Optional items: Consult factory for pricing and part number changes.

Performance Range



Note: for the gray areas, consult factory



EBARA

EBARA Pumps Americas Corporation

www.pumpsebara.com

IL - (847) 841-7867

PumpSupplyInc.com

MN - (651) 758-7867

IL - (847) 841-7867



Distributed by Pump Supply Inc



MN - (651) 758-7867



Applications

Water Supply • Drainage • Irrigation • Air Conditioning • Building Installations • Booster Pump
Condensate Circulations • Cooling Services • General Industries • Transfer Pump

Illinois Location:

(847) 841-7867

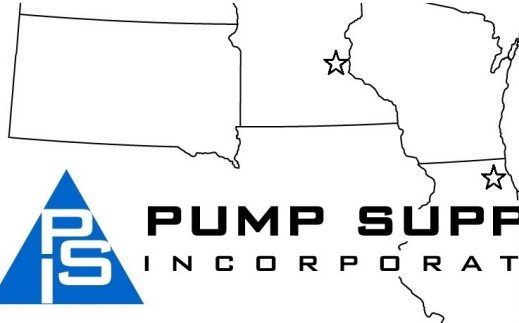
860 Church Rd Elgin, IL 60123

Minnesota Location:

(651) 758-7867

330 Mill Bay South Suite 1511
Afton, MN 55001

PumpSupplyInc.com



IL - (847) 841-7867

PumpSupplyInc.com

MN - (651) 758-7867