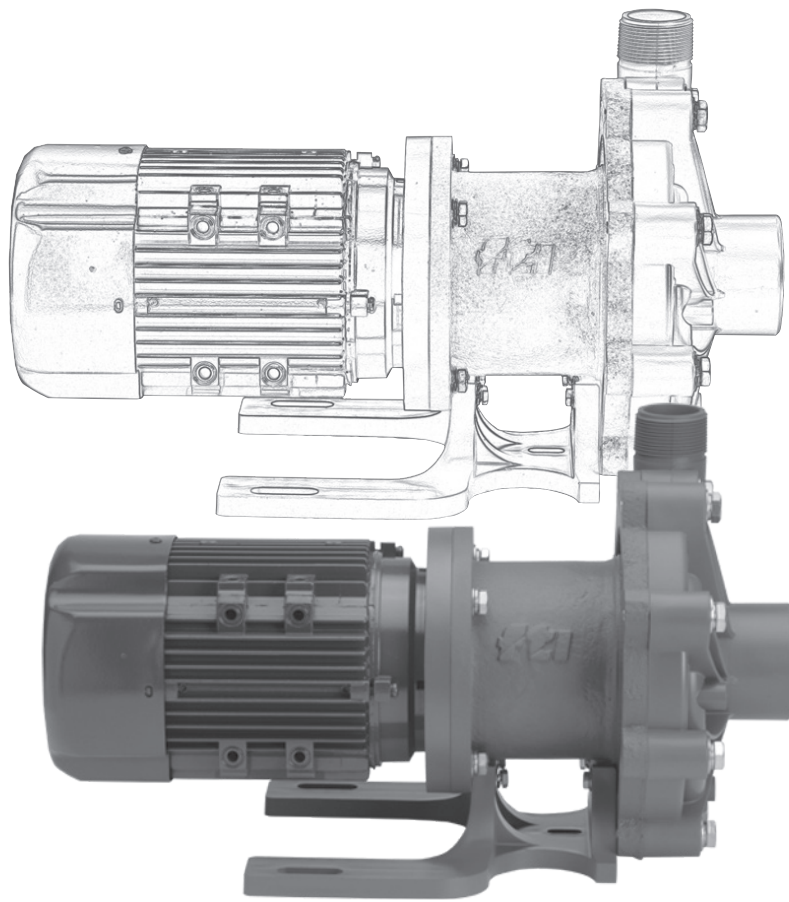


DB SERIES OUTLINE DIMENSIONS

Literature ID No. FT06-930
Revision 4



FINISH THOMPSON INC.

921 Greengarden Road • Erie, PA 16501-1591 U.S.A.
Ph 814-455-4478 • Fax 814-455-8518
Email fti@finishthompson.com • www.finishthompson.com

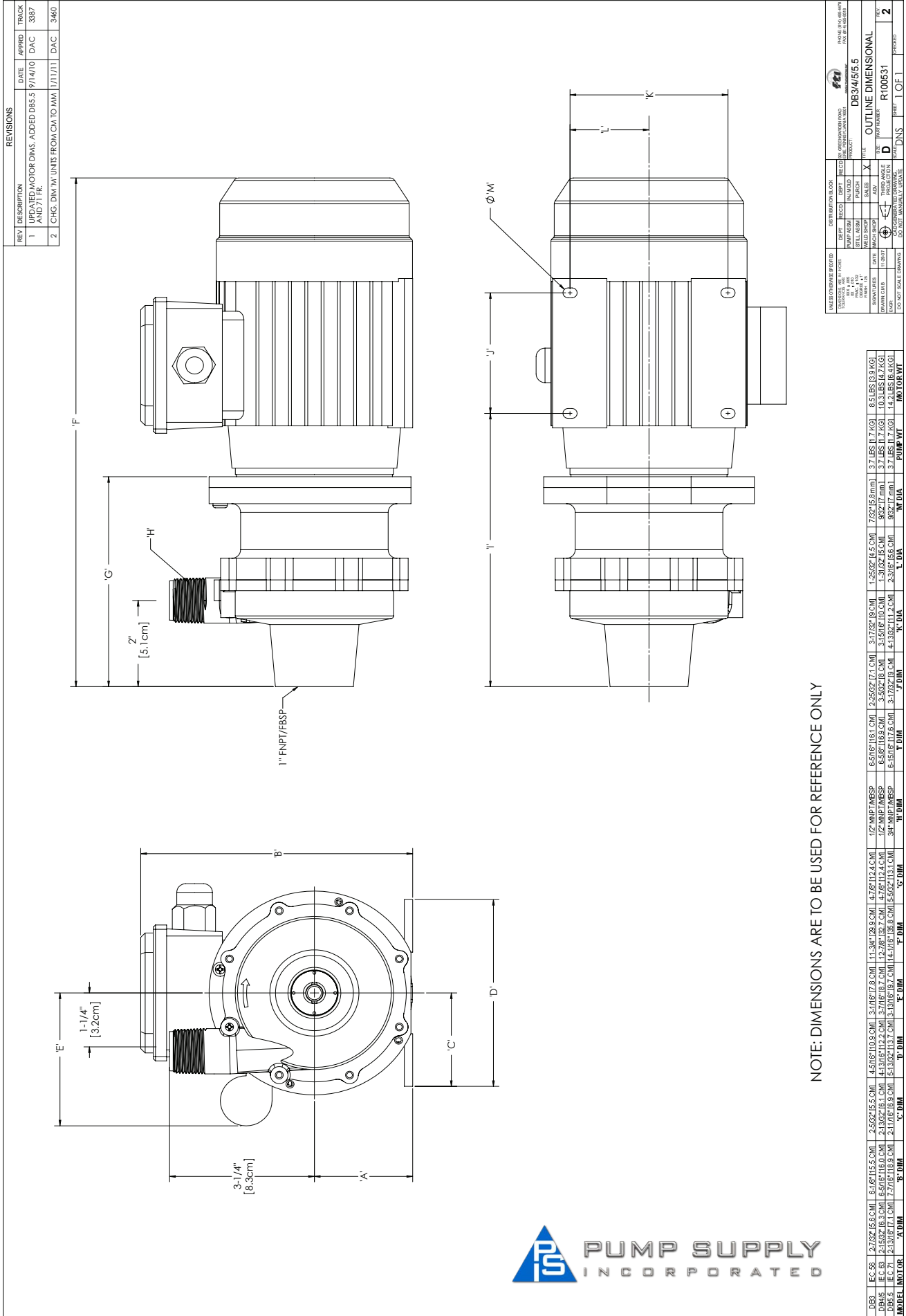
10/23/12

TABLE OF CONTENTS



Drawing	Page No.
DB3/4/5/5.5 Outline Dimensions	3
DB6/6H/9 Outline Dimensions	
Threaded.....	4
Union.....	5
Flanged	6
DB8 Outline Dimensions	
Threaded.....	7
Union.....	8
Flanged	9
DB7/10 Outline Dimensions	
Threaded.....	10
Union.....	11
Flanged	12
DB11/15 Outline Dimensions	
Threaded.....	13
Union.....	14
Flanged	15
DB11/15 Outline Dimensions 80/90 FR B5	
Threaded.....	16
Union.....	17
Flanged	18
DB11/15 Outline Dimensions 100/112 FR B5	
Threaded.....	19
Union.....	20
Flanged	21
DB22 Outline Dimensions	
Threaded.....	22
Union.....	23
Flanged	24

DB3/4/5/5.5 Outline Dimensions - Threaded Housing (R100531)



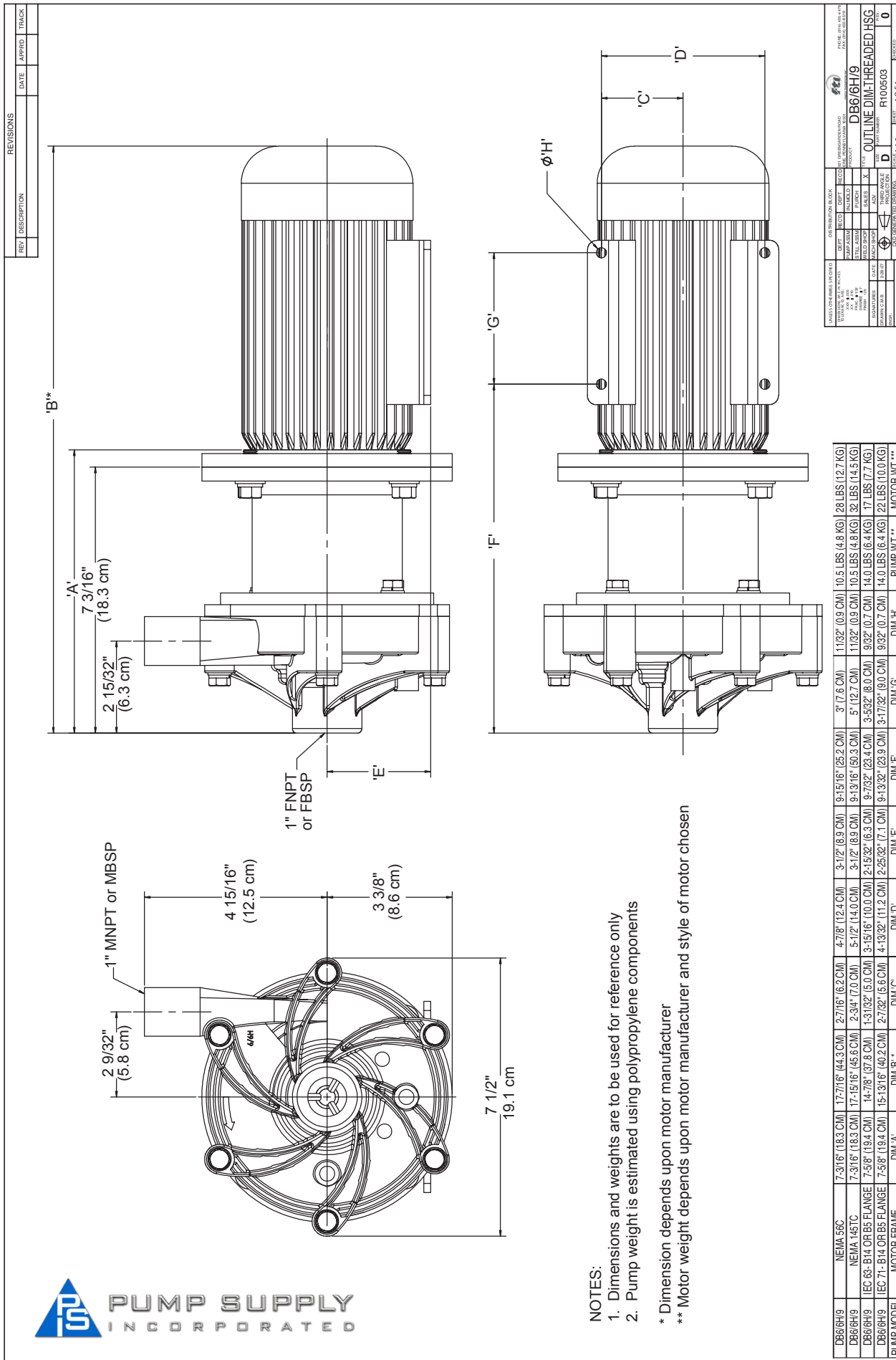
REVISIONS			
REV	DESCRIPTION	DATE	APPROV
1	UPDATED MOTOR DIMS. ADDED DBS.5 AND 7.1 TR.	1/14/10	DAC
2	CHG. DIM 'M' UNITS FROM CM TO MM.	1/17/11	DAC

LINE OR DRAWING SYMBOL	DESCRIPTION	DATE	BY	CHKD	APPD	TRKCD											
DBS.5	EC-SB	2/25/09	15.5 CM	4.50	110.3 CM	3.17	72.7 CM	2.55	65.5 CM	8.18	115.5 CM	2.78	70.2 CM	8.18	115.5 CM	2.78	70.2 CM
DBS.4	EC-SB	2/25/09	15.5 CM	4.50	110.3 CM	3.17	72.7 CM	2.55	65.5 CM	8.18	115.5 CM	2.78	70.2 CM	8.18	115.5 CM	2.78	70.2 CM
DBS.3	EC-SB	2/25/09	15.5 CM	4.50	110.3 CM	3.17	72.7 CM	2.55	65.5 CM	8.18	115.5 CM	2.78	70.2 CM	8.18	115.5 CM	2.78	70.2 CM
DBS.2	EC-SB	2/25/09	15.5 CM	4.50	110.3 CM	3.17	72.7 CM	2.55	65.5 CM	8.18	115.5 CM	2.78	70.2 CM	8.18	115.5 CM	2.78	70.2 CM
DBS.1	EC-SB	2/25/09	15.5 CM	4.50	110.3 CM	3.17	72.7 CM	2.55	65.5 CM	8.18	115.5 CM	2.78	70.2 CM	8.18	115.5 CM	2.78	70.2 CM
MODEL MOTOR	A DIM	B DIM	C DIM	F DIM	G DIM	H DIM	J DIM	K DIM	L DIM	M DIM	PUMP WT	MOTOR WT					

NOTE: DIMENSIONS ARE TO BE USED FOR REFERENCE ONLY



DB6/6H/9 Outline Dimensions - Threaded Housing (R100503)



REV	DESCRIPTION	DATE	APPROV	TRACK

DESIGNATION		DESCRIPTION		DATE		BY		CHECKED	

--	--	--	--	--	--	--	--	--	--

--	--	--	--	--	--	--	--	--	--

--	--	--	--	--	--	--	--	--	--

--	--	--	--	--	--	--	--	--	--

--	--	--	--	--	--	--	--	--	--

--	--	--	--	--	--	--	--	--	--

--	--	--	--	--	--	--	--	--	--

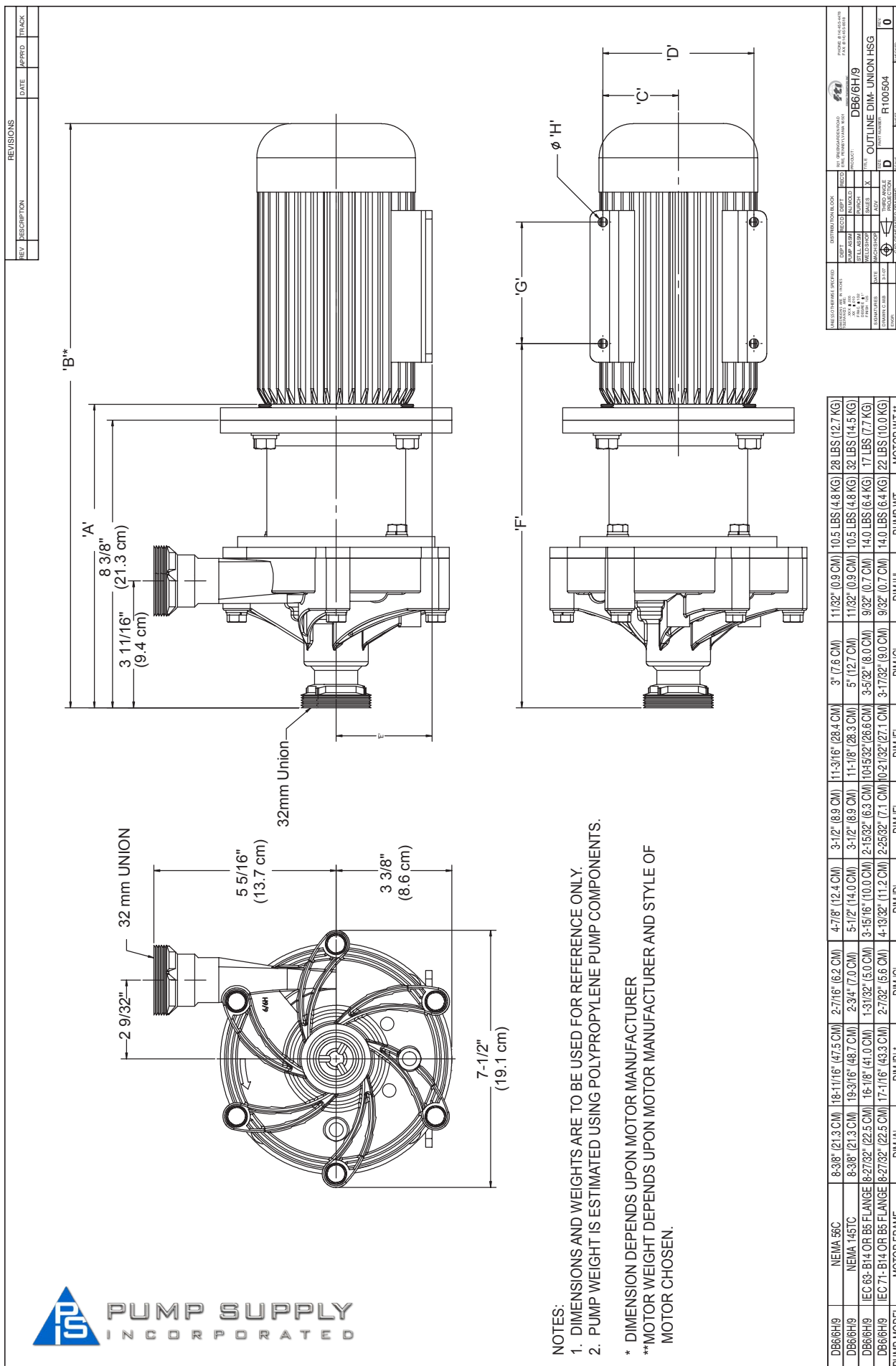
--	--	--	--	--	--	--	--	--	--

--	--	--	--	--	--	--	--	--	--

- NOTES:
- Dimensions and weights are to be used for reference only
 - Pump weight is estimated using polypropylene components
- * Dimension depends upon motor manufacturer
 ** Motor weight depends upon motor manufacturer and style of motor chosen



DB6/6H/9 Outline Dimensions - Union Housing (R100504)



APPROVALS	DATE	DESCRIPTION

NO. OF. COPIES TO BE MADE	DATE	BY	FOR

PUMP MODEL	MOTOR FRAME	DIM 'A'	DIM 'B'	DIM 'C'	DIM 'D'	DIM 'E'	DIM 'F'	DIM 'G'	DIM 'H'	PUMP WT	MOTOR WT **
DB66H/9	NEMA 56C	8-3/8" (21.3 CM)	18-11/16" (47.5 CM)	2-7/16" (6.2 CM)	4-7/8" (12.4 CM)	3-1/2" (8.9 CM)	11-3/16" (28.4 CM)	3" (7.6 CM)	11/32" (0.9 CM)	10.5 LBS (4.8 KG)	28 LBS (12.7 KG)
DB66H/9	NEMA 145TC	8-3/8" (21.3 CM)	19-3/16" (48.7 CM)	2-3/4" (7.0 CM)	5-1/2" (14.0 CM)	3-1/2" (8.9 CM)	11-1/8" (28.3 CM)	5" (12.7 CM)	11/32" (0.9 CM)	10.5 LBS (4.8 KG)	32 LBS (14.5 KG)
DB66H/9	IEC 63-B14 OR B5 FLANGE	8-27/32" (22.5 CM)	16-1/8" (41.0 CM)	1-31/32" (5.0 CM)	3-15/16" (10.0 CM)	2-15/32" (6.3 CM)	10-45/32" (28.6 CM)	3-5/32" (6.0 CM)	9/32" (0.7 CM)	14.0 LBS (6.4 KG)	17 LBS (7.7 KG)
DB66H/9	IEC 71-B14 OR B5 FLANGE	8-27/32" (22.5 CM)	17-1/16" (43.3 CM)	2-7/32" (5.6 CM)	4-13/32" (11.2 CM)	2-25/32" (7.1 CM)	10-21/32" (27.1 CM)	3-17/32" (9.0 CM)	9/32" (0.7 CM)	14.0 LBS (6.4 KG)	22 LBS (10.0 KG)

DB6/6H/9 Outline Dimensions - Flanged Housing (R100505)

REV	DESCRIPTION	DATE	APPROV	TRACK

REVISED		DESIGN		CHECKED		DATE		BY	
NO.	DATE	NO.	DATE	NO.	DATE	NO.	DATE	NO.	DATE

REVISED	DESIGN	CHECKED	DATE	BY

REVISED	DESIGN	CHECKED	DATE	BY

Suction & Discharge Flange Detail

1" ANSI 150#
PN20
PN40

NOTES:

- DIMENSIONS AND WEIGHTS ARE TO BE USED FOR REFERENCE ONLY.
- PUMP WEIGHT IS ESTIMATED USING POLYPROPYLENE PUMP COMPONENTS.

* DIMENSION DEPENDS UPON MOTOR MANUFACTURER.

** MOTOR WEIGHT DEPENDS UPON MOTOR MANUFACTURER AND STYLE OF MOTOR CHOSEN.

PUMP MODEL	MOTOR FRAME	DIM 'A'	DIM 'B'	DIM 'C'	DIM 'D'	DIM 'E'	DIM 'F'	DIM 'G'	DIM 'H'	PUMP WT	MOTOR WT **
DB6/6H9	NEMA 56C	8-9/16" (21.7 CM)	18-27/32" (47.8 CM)	2-7/16" (62.2 CM)	4-7/8" (12.4 CM)	3-1/2" (8.9 CM)	11-11/32" (28.7 CM)	3" (7.6 CM)	11/32" (0.9 CM)	10.5 LBS (4.8 KG)	28 LBS (12.7 KG)
DB6/6H9	NEMA 145TC	8-9/16" (21.7 CM)	19-11/32" (49.1 CM)	2-3/4" (7.0 CM)	5-1/2" (14.0 CM)	3-1/2" (8.9 CM)	11-7/32" (28.5 CM)	5" (12.7 CM)	11/32" (0.9 CM)	10.5 LBS (4.8 KG)	32 LBS (14.5 KG)
DB6/6H9	IEC 63-B14-OR-B5 FLANGE	9-21/32" (22.9 CM)	16-9/32" (31.3 CM)	1-31/32" (5.0 CM)	3-15/16" (10.0 CM)	2-15/32" (6.3 CM)	10-5/8" (26.9 CM)	3-5/32" (8.0 CM)	9/32" (0.7 CM)	14.0 LBS (6.4 KG)	17 LBS (7.7 KG)
DB6/6H9	IEC 71-B14-OR-B5 FLANGE	9-21/32" (22.9 CM)	17-7/32" (43.7 CM)	2-7/32" (5.6 CM)	4-13/32" (11.2 CM)	2-25/32" (7.1 CM)	10-13/16" (127.4 CM)	3-17/32" (9.0 CM)	9/32" (0.7 CM)	14.0 LBS (6.4 KG)	22 LBS (10.0 KG)

DB8 Outline Dimensions - Threaded Housing (R100506)

REV	DESCRIPTION	DATE	APPROV	TACK

DISTRIBUTION BLOCK		DISTRIBUTION BLOCK	
DEPT	OFFICE	DEPT	OFFICE

MANUFACTURING SPECIFICATIONS		MANUFACTURING SPECIFICATIONS	
INDUSTRY A.S. NUMBER	INDUSTRY A.S. NUMBER	INDUSTRY A.S. NUMBER	INDUSTRY A.S. NUMBER

DESIGN	REV	DATE	BY	CHKD	APPD

COMP. NO.	COMP. NAME	REV	DATE	BY	CHKD	APPD

REV	DESCRIPTION	DATE	APPROV	TACK

NOTES:

- DIMENSIONS AND WEIGHTS ARE TO BE USED FOR REFERENCE ONLY.
- PUMP WEIGHT IS ESTIMATED USING POLYPROPYLENE PUMP COMPONENTS.

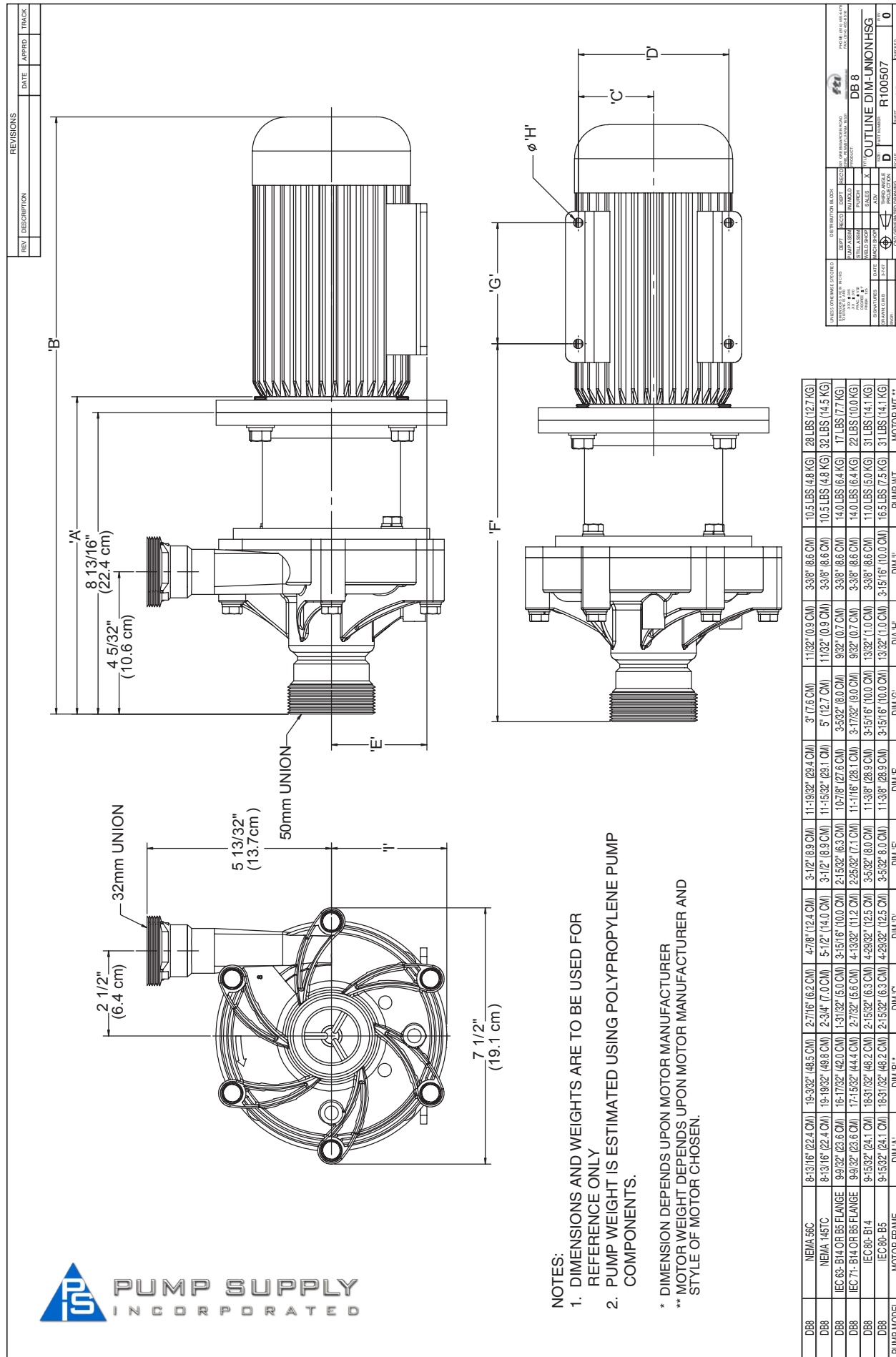
* DIMENSION DEPENDS UPON MOTOR MANUFACTURER.
 **MOTOR WEIGHT DEPENDS UPON MOTOR MANUFACTURER AND STYLE OF MOTOR CHOSEN.

DB8	NEVA 58C	7-1/32" (17.9 CM)	17-9/32" (43.9 CM)	2-7/16" (6.2 CM)	4-7/8" (12.4 CM)	3-1/2" (8.9 CM)	9-5/32" (24.8 CM)	3" (7.6 CM)	11/32" (0.9 CM)	9-3/8" (8.6 CM)	10.5 LBS (4.8 KG)	28 LBS (12.7 KG)
DB8	NEVA 145TC	7-1/32" (17.9 CM) <td>17-25/32" (45.2 CM) <td>2-3/4" (7.0 CM) <td>5-1/2" (14.0 CM) <td>3-1/2" (8.9 CM) <td>9-2/32" (24.5 CM) <td>5" (12.7 CM) <td>11/32" (0.9 CM) <td>9-3/8" (8.6 CM) <td>10.5 LBS (4.8 KG) <td>32 LBS (14.5 KG) </td></td></td></td></td></td></td></td></td></td>	17-25/32" (45.2 CM) <td>2-3/4" (7.0 CM) <td>5-1/2" (14.0 CM) <td>3-1/2" (8.9 CM) <td>9-2/32" (24.5 CM) <td>5" (12.7 CM) <td>11/32" (0.9 CM) <td>9-3/8" (8.6 CM) <td>10.5 LBS (4.8 KG) <td>32 LBS (14.5 KG) </td></td></td></td></td></td></td></td></td>	2-3/4" (7.0 CM) <td>5-1/2" (14.0 CM) <td>3-1/2" (8.9 CM) <td>9-2/32" (24.5 CM) <td>5" (12.7 CM) <td>11/32" (0.9 CM) <td>9-3/8" (8.6 CM) <td>10.5 LBS (4.8 KG) <td>32 LBS (14.5 KG) </td></td></td></td></td></td></td></td>	5-1/2" (14.0 CM) <td>3-1/2" (8.9 CM) <td>9-2/32" (24.5 CM) <td>5" (12.7 CM) <td>11/32" (0.9 CM) <td>9-3/8" (8.6 CM) <td>10.5 LBS (4.8 KG) <td>32 LBS (14.5 KG) </td></td></td></td></td></td></td>	3-1/2" (8.9 CM) <td>9-2/32" (24.5 CM) <td>5" (12.7 CM) <td>11/32" (0.9 CM) <td>9-3/8" (8.6 CM) <td>10.5 LBS (4.8 KG) <td>32 LBS (14.5 KG) </td></td></td></td></td></td>	9-2/32" (24.5 CM) <td>5" (12.7 CM) <td>11/32" (0.9 CM) <td>9-3/8" (8.6 CM) <td>10.5 LBS (4.8 KG) <td>32 LBS (14.5 KG) </td></td></td></td></td>	5" (12.7 CM) <td>11/32" (0.9 CM) <td>9-3/8" (8.6 CM) <td>10.5 LBS (4.8 KG) <td>32 LBS (14.5 KG) </td></td></td></td>	11/32" (0.9 CM) <td>9-3/8" (8.6 CM) <td>10.5 LBS (4.8 KG) <td>32 LBS (14.5 KG) </td></td></td>	9-3/8" (8.6 CM) <td>10.5 LBS (4.8 KG) <td>32 LBS (14.5 KG) </td></td>	10.5 LBS (4.8 KG) <td>32 LBS (14.5 KG) </td>	32 LBS (14.5 KG)
DB8	EC-63-B14 OR B5 FLANGE	7-1/32" (17.9 CM) <td>14-23/32" (37.4 CM) <td>1-31/32" (5.0 CM) <td>3-15/16" (10.0 CM) <td>2-5/32" (6.3 CM) <td>9-1/16" (23.0 CM) <td>3-5/32" (6.0 CM) <td>9/32" (0.7 CM) <td>9-3/8" (8.6 CM) <td>14.0 LBS (6.4 KG) <td>17 LBS (7.7 KG) </td></td></td></td></td></td></td></td></td></td>	14-23/32" (37.4 CM) <td>1-31/32" (5.0 CM) <td>3-15/16" (10.0 CM) <td>2-5/32" (6.3 CM) <td>9-1/16" (23.0 CM) <td>3-5/32" (6.0 CM) <td>9/32" (0.7 CM) <td>9-3/8" (8.6 CM) <td>14.0 LBS (6.4 KG) <td>17 LBS (7.7 KG) </td></td></td></td></td></td></td></td></td>	1-31/32" (5.0 CM) <td>3-15/16" (10.0 CM) <td>2-5/32" (6.3 CM) <td>9-1/16" (23.0 CM) <td>3-5/32" (6.0 CM) <td>9/32" (0.7 CM) <td>9-3/8" (8.6 CM) <td>14.0 LBS (6.4 KG) <td>17 LBS (7.7 KG) </td></td></td></td></td></td></td></td>	3-15/16" (10.0 CM) <td>2-5/32" (6.3 CM) <td>9-1/16" (23.0 CM) <td>3-5/32" (6.0 CM) <td>9/32" (0.7 CM) <td>9-3/8" (8.6 CM) <td>14.0 LBS (6.4 KG) <td>17 LBS (7.7 KG) </td></td></td></td></td></td></td>	2-5/32" (6.3 CM) <td>9-1/16" (23.0 CM) <td>3-5/32" (6.0 CM) <td>9/32" (0.7 CM) <td>9-3/8" (8.6 CM) <td>14.0 LBS (6.4 KG) <td>17 LBS (7.7 KG) </td></td></td></td></td></td>	9-1/16" (23.0 CM) <td>3-5/32" (6.0 CM) <td>9/32" (0.7 CM) <td>9-3/8" (8.6 CM) <td>14.0 LBS (6.4 KG) <td>17 LBS (7.7 KG) </td></td></td></td></td>	3-5/32" (6.0 CM) <td>9/32" (0.7 CM) <td>9-3/8" (8.6 CM) <td>14.0 LBS (6.4 KG) <td>17 LBS (7.7 KG) </td></td></td></td>	9/32" (0.7 CM) <td>9-3/8" (8.6 CM) <td>14.0 LBS (6.4 KG) <td>17 LBS (7.7 KG) </td></td></td>	9-3/8" (8.6 CM) <td>14.0 LBS (6.4 KG) <td>17 LBS (7.7 KG) </td></td>	14.0 LBS (6.4 KG) <td>17 LBS (7.7 KG) </td>	17 LBS (7.7 KG)
DB8	EC-71-B14 OR B5 FLANGE	7-1/32" (17.9 CM) <td>15-21/32" (39.8 CM) <td>2-7/32" (5.6 CM) <td>4-13/32" (11.2 CM) <td>2-5/32" (6.3 CM) <td>9-1/4" (23.5 CM) <td>3-1/2" (8.9 CM) <td>9/32" (0.7 CM) <td>9-3/8" (8.6 CM) <td>14.0 LBS (6.4 KG) <td>22 LBS (10.0 KG) </td></td></td></td></td></td></td></td></td></td>	15-21/32" (39.8 CM) <td>2-7/32" (5.6 CM) <td>4-13/32" (11.2 CM) <td>2-5/32" (6.3 CM) <td>9-1/4" (23.5 CM) <td>3-1/2" (8.9 CM) <td>9/32" (0.7 CM) <td>9-3/8" (8.6 CM) <td>14.0 LBS (6.4 KG) <td>22 LBS (10.0 KG) </td></td></td></td></td></td></td></td></td>	2-7/32" (5.6 CM) <td>4-13/32" (11.2 CM) <td>2-5/32" (6.3 CM) <td>9-1/4" (23.5 CM) <td>3-1/2" (8.9 CM) <td>9/32" (0.7 CM) <td>9-3/8" (8.6 CM) <td>14.0 LBS (6.4 KG) <td>22 LBS (10.0 KG) </td></td></td></td></td></td></td></td>	4-13/32" (11.2 CM) <td>2-5/32" (6.3 CM) <td>9-1/4" (23.5 CM) <td>3-1/2" (8.9 CM) <td>9/32" (0.7 CM) <td>9-3/8" (8.6 CM) <td>14.0 LBS (6.4 KG) <td>22 LBS (10.0 KG) </td></td></td></td></td></td></td>	2-5/32" (6.3 CM) <td>9-1/4" (23.5 CM) <td>3-1/2" (8.9 CM) <td>9/32" (0.7 CM) <td>9-3/8" (8.6 CM) <td>14.0 LBS (6.4 KG) <td>22 LBS (10.0 KG) </td></td></td></td></td></td>	9-1/4" (23.5 CM) <td>3-1/2" (8.9 CM) <td>9/32" (0.7 CM) <td>9-3/8" (8.6 CM) <td>14.0 LBS (6.4 KG) <td>22 LBS (10.0 KG) </td></td></td></td></td>	3-1/2" (8.9 CM) <td>9/32" (0.7 CM) <td>9-3/8" (8.6 CM) <td>14.0 LBS (6.4 KG) <td>22 LBS (10.0 KG) </td></td></td></td>	9/32" (0.7 CM) <td>9-3/8" (8.6 CM) <td>14.0 LBS (6.4 KG) <td>22 LBS (10.0 KG) </td></td></td>	9-3/8" (8.6 CM) <td>14.0 LBS (6.4 KG) <td>22 LBS (10.0 KG) </td></td>	14.0 LBS (6.4 KG) <td>22 LBS (10.0 KG) </td>	22 LBS (10.0 KG)
DB8	EC-80-B14	7-21/32" (19.4 CM) <td>17-5/32" (43.6 CM) <td>2-15/32" (6.3 CM) <td>4-29/32" (12.5 CM) <td>3-5/32" (6.0 CM) <td>9-9/16" (24.3 CM) <td>3-15/16" (10.0 CM) <td>13/32" (1.0 CM) <td>9-3/8" (8.6 CM) <td>11.0 LBS (5.0 KG) <td>31 LBS (14.1 KG) </td></td></td></td></td></td></td></td></td></td>	17-5/32" (43.6 CM) <td>2-15/32" (6.3 CM) <td>4-29/32" (12.5 CM) <td>3-5/32" (6.0 CM) <td>9-9/16" (24.3 CM) <td>3-15/16" (10.0 CM) <td>13/32" (1.0 CM) <td>9-3/8" (8.6 CM) <td>11.0 LBS (5.0 KG) <td>31 LBS (14.1 KG) </td></td></td></td></td></td></td></td></td>	2-15/32" (6.3 CM) <td>4-29/32" (12.5 CM) <td>3-5/32" (6.0 CM) <td>9-9/16" (24.3 CM) <td>3-15/16" (10.0 CM) <td>13/32" (1.0 CM) <td>9-3/8" (8.6 CM) <td>11.0 LBS (5.0 KG) <td>31 LBS (14.1 KG) </td></td></td></td></td></td></td></td>	4-29/32" (12.5 CM) <td>3-5/32" (6.0 CM) <td>9-9/16" (24.3 CM) <td>3-15/16" (10.0 CM) <td>13/32" (1.0 CM) <td>9-3/8" (8.6 CM) <td>11.0 LBS (5.0 KG) <td>31 LBS (14.1 KG) </td></td></td></td></td></td></td>	3-5/32" (6.0 CM) <td>9-9/16" (24.3 CM) <td>3-15/16" (10.0 CM) <td>13/32" (1.0 CM) <td>9-3/8" (8.6 CM) <td>11.0 LBS (5.0 KG) <td>31 LBS (14.1 KG) </td></td></td></td></td></td>	9-9/16" (24.3 CM) <td>3-15/16" (10.0 CM) <td>13/32" (1.0 CM) <td>9-3/8" (8.6 CM) <td>11.0 LBS (5.0 KG) <td>31 LBS (14.1 KG) </td></td></td></td></td>	3-15/16" (10.0 CM) <td>13/32" (1.0 CM) <td>9-3/8" (8.6 CM) <td>11.0 LBS (5.0 KG) <td>31 LBS (14.1 KG) </td></td></td></td>	13/32" (1.0 CM) <td>9-3/8" (8.6 CM) <td>11.0 LBS (5.0 KG) <td>31 LBS (14.1 KG) </td></td></td>	9-3/8" (8.6 CM) <td>11.0 LBS (5.0 KG) <td>31 LBS (14.1 KG) </td></td>	11.0 LBS (5.0 KG) <td>31 LBS (14.1 KG) </td>	31 LBS (14.1 KG)
DB8	EC-80-B5	7-21/32" (19.4 CM) <td>17-5/32" (43.6 CM) <td>2-15/32" (6.3 CM) <td>4-29/32" (12.5 CM) <td>3-5/32" (6.0 CM) <td>9-9/16" (24.3 CM) <td>3-15/16" (10.0 CM) <td>13/32" (1.0 CM) <td>9-3/8" (8.6 CM) <td>16.5 LBS (7.5 KG) <td>31 LBS (14.1 KG) </td></td></td></td></td></td></td></td></td></td>	17-5/32" (43.6 CM) <td>2-15/32" (6.3 CM) <td>4-29/32" (12.5 CM) <td>3-5/32" (6.0 CM) <td>9-9/16" (24.3 CM) <td>3-15/16" (10.0 CM) <td>13/32" (1.0 CM) <td>9-3/8" (8.6 CM) <td>16.5 LBS (7.5 KG) <td>31 LBS (14.1 KG) </td></td></td></td></td></td></td></td></td>	2-15/32" (6.3 CM) <td>4-29/32" (12.5 CM) <td>3-5/32" (6.0 CM) <td>9-9/16" (24.3 CM) <td>3-15/16" (10.0 CM) <td>13/32" (1.0 CM) <td>9-3/8" (8.6 CM) <td>16.5 LBS (7.5 KG) <td>31 LBS (14.1 KG) </td></td></td></td></td></td></td></td>	4-29/32" (12.5 CM) <td>3-5/32" (6.0 CM) <td>9-9/16" (24.3 CM) <td>3-15/16" (10.0 CM) <td>13/32" (1.0 CM) <td>9-3/8" (8.6 CM) <td>16.5 LBS (7.5 KG) <td>31 LBS (14.1 KG) </td></td></td></td></td></td></td>	3-5/32" (6.0 CM) <td>9-9/16" (24.3 CM) <td>3-15/16" (10.0 CM) <td>13/32" (1.0 CM) <td>9-3/8" (8.6 CM) <td>16.5 LBS (7.5 KG) <td>31 LBS (14.1 KG) </td></td></td></td></td></td>	9-9/16" (24.3 CM) <td>3-15/16" (10.0 CM) <td>13/32" (1.0 CM) <td>9-3/8" (8.6 CM) <td>16.5 LBS (7.5 KG) <td>31 LBS (14.1 KG) </td></td></td></td></td>	3-15/16" (10.0 CM) <td>13/32" (1.0 CM) <td>9-3/8" (8.6 CM) <td>16.5 LBS (7.5 KG) <td>31 LBS (14.1 KG) </td></td></td></td>	13/32" (1.0 CM) <td>9-3/8" (8.6 CM) <td>16.5 LBS (7.5 KG) <td>31 LBS (14.1 KG) </td></td></td>	9-3/8" (8.6 CM) <td>16.5 LBS (7.5 KG) <td>31 LBS (14.1 KG) </td></td>	16.5 LBS (7.5 KG) <td>31 LBS (14.1 KG) </td>	31 LBS (14.1 KG)
PUMP MODEL	MOTOR FRAME	DM/A	DM/B*	DM/C	DM/D	DM/E	DM/F	DM/G	DIA H	DM'I	PUMP WT	MOTOR WT**

REVISIONS

REV	DESCRIPTION	DATE	APPROV	TACK

DB8 Outline Dimensions - Union Housing (R100507)



NOTES:
 1. DIMENSIONS AND WEIGHTS ARE TO BE USED FOR REFERENCE ONLY
 2. PUMP WEIGHT IS ESTIMATED USING POLYPROPYLENE PUMP COMPONENTS.
 * DIMENSION DEPENDS UPON MOTOR MANUFACTURER
 ** MOTOR WEIGHT DEPENDS UPON MOTOR MANUFACTURER AND STYLE OF MOTOR CHOSEN.



DB8 Outline Dimensions - Flange Housing (R100508)

SUCTION FLANGE
1-1/2" ISO 150#
(1-1/2" ISO PN 20)
(1-1/2" ISO PN 40)

DISCHARGE FLANGE
1" ANSI 150#
(1" ISO PN 20)
(1" ISO PN 40)

Dimensions: 2 1/2" (6.4 cm), 5 1/8" (13.0 cm), 7 1/2" (19.1 cm)

Dimensions: 8 13/32" (21.4 cm), 3 3/4" (9.5 cm), 'A', 'B', 'E'

Dimensions: 'F', 'G', 'H', 'D'

Dimensions: 'F', 'G', 'H', 'D'

SUCTION FLANGE DETAIL
1 1/2" ANSI 150#
ISO PN 20
ISO PN 40

Dimensions: 7/8", 5/8", 3/8"

DISCHARGE FLANGE DETAIL
1" ANSI 150#
ISO PN 20
ISO PN 40

Dimensions: 3/4", 5/8", 1/4"

NOTES:

1. DIMENSIONS AND WEIGHTS ARE FOR REFERENCE ONLY.
2. PUMP WEIGHT IS ESTIMATED USING POLYPROPYLENE COMPONENTS.

* DIMENSION DEPENDS UPON MOTOR MANUFACTURER.
**MOTOR WEIGHT DEPENDS UPON MOTOR MANUFACTURER AND STYLE OF MOTOR CHOSEN.

PUMP MODEL	NEMA 56C	NEMA 145TC	IEC 63 B14/B55 FLANGE	IEC 71 B14/B55 FLANGE	FC 80 B14	FC 80 B55	MOTOR FRAME	NEMA 56C	NEMA 145TC	IEC 63 B14/B55 FLANGE	IEC 71 B14/B55 FLANGE	FC 80 B14	FC 80 B55	MOTOR FRAME	NET WEIGHT (KG)	NET WEIGHT (LBS)
DB8	8-13/32" (21.4 CM)	18-11/16" (47.5 CM)	2-7/8" (6.2 CM)	2-7/8" (6.2 CM)	2-7/8" (6.2 CM)	2-7/8" (6.2 CM)	DB8	4-7/8" (12.4 CM)	3-1/2" (8.9 CM)	11-3/16" (28.4 CM)	11-1/16" (28.1 CM)	11-1/16" (28.1 CM)	11-1/16" (28.1 CM)	DB8	10.5 LBS (4.8 KG)	28 LBS (12.7 KG)
DB8	8-13/32" (21.4 CM)	18-11/16" (47.5 CM)	2-7/8" (6.2 CM)	2-7/8" (6.2 CM)	2-7/8" (6.2 CM)	2-7/8" (6.2 CM)	DB8	5-1/2" (14.0 CM)	3-1/2" (8.9 CM)	11-1/16" (28.1 CM)	11-1/16" (28.1 CM)	11-1/16" (28.1 CM)	11-1/16" (28.1 CM)	DB8	10.5 LBS (4.8 KG)	32 LBS (14.5 KG)
DB8	8-13/32" (21.4 CM)	18-11/16" (47.5 CM)	2-7/8" (6.2 CM)	2-7/8" (6.2 CM)	2-7/8" (6.2 CM)	2-7/8" (6.2 CM)	DB8	3-1/2" (8.9 CM)	3-1/2" (8.9 CM)	10-15/32" (26.5 CM)	10-15/32" (26.5 CM)	10-15/32" (26.5 CM)	10-15/32" (26.5 CM)	DB8	14.0 LBS (6.4 KG)	17 LBS (7.7 KG)
DB8	8-13/32" (21.4 CM)	18-11/16" (47.5 CM)	2-7/8" (6.2 CM)	2-7/8" (6.2 CM)	2-7/8" (6.2 CM)	2-7/8" (6.2 CM)	DB8	4-13/32" (11.2 CM)	4-13/32" (11.2 CM)	10-21/32" (27.1 CM)	10-21/32" (27.1 CM)	10-21/32" (27.1 CM)	10-21/32" (27.1 CM)	DB8	14.0 LBS (6.4 KG)	22 LBS (10.0 KG)
DB8	8-13/32" (21.4 CM)	18-11/16" (47.5 CM)	2-7/8" (6.2 CM)	2-7/8" (6.2 CM)	2-7/8" (6.2 CM)	2-7/8" (6.2 CM)	DB8	4-29/32" (12.5 CM)	4-29/32" (12.5 CM)	10-31/32" (27.9 CM)	10-31/32" (27.9 CM)	10-31/32" (27.9 CM)	10-31/32" (27.9 CM)	DB8	11.0 LBS (5.0 KG)	31 LBS (14.1 KG)
DB8	8-13/32" (21.4 CM)	18-11/16" (47.5 CM)	2-7/8" (6.2 CM)	2-7/8" (6.2 CM)	2-7/8" (6.2 CM)	2-7/8" (6.2 CM)	DB8	4-29/32" (12.5 CM)	4-29/32" (12.5 CM)	10-31/32" (27.9 CM)	10-31/32" (27.9 CM)	10-31/32" (27.9 CM)	10-31/32" (27.9 CM)	DB8	16.5 LBS (7.5 KG)	31 LBS (14.1 KG)

REVISIONS	REV	DESCRIPTION	DATE	APPROV	TRACK

PUMP SUPPLY INCORPORATED

DATE OF NEXT RELEASE	REVISED BY	REASON FOR CHANGE	DATE	APPROVED BY

DB8

OUTLINE DIM-FLANGED HSG

R100508

10-F1

DB7/10 Outline Dimensions - Threaded Housing (R100509)

MOTOR MODEL	DIM 'A'	DIM 'B'	DIM 'C'	DIM 'D'	DIM 'E'	DIM 'F'	DIM 'G'	DIA 'H'	DIM 'I'	PUMP WT	MOTOR WT **
DB7/10	7-3/32" (18.0 CM)	17-11/32" (44.1 CM)	2-7/16" (6.2 CM)	4-7/8" (12.4 CM)	5-1/2" (14.0 CM)	3-1/2" (8.9 CM)	3-7/8" (9.9 CM)	1-1/32" (0.9 CM)	9-27/32" (25.0 CM)	10.5 LBS (4.8 KG)	28 LBS (12.7 KG)
DB7/10	7-3/32" (18.0 CM)	17-27/32" (45.3 CM)	2-3/4" (0 CM)	5-1/2" (14.0 CM)	3-1/2" (8.9 CM)	5" (12.7 CM)	5" (12.7 CM)	1-1/32" (0.9 CM)	9-25/32" (24.7 CM)	10.5 LBS (4.8 KG)	32 LBS (14.5 KG)
DB7/10	IEC 63-B14 OR B5 FLANGE	7-1/32" (19.1 CM)	14-25/32" (37.5 CM)	1-31/32" (0 CM)	3-15/16" (10.0 CM)	2-15/32" (6.3 CM)	3-3/8" (8.6 CM)	9/32" (0.7 CM)	9-1/8" (23.2 CM)	14.0 LBS (6.4 KG)	17 LBS (7.7 KG)
DB7/10	IEC 71-B14 OR B5 FLANGE	7-1/32" (19.1 CM)	15-23/32" (39.9 CM)	2-7/32" (5.6 CM)	4-13/32" (11.2 CM)	2-25/32" (7.1 CM)	3-17/32" (9.0 CM)	9/32" (0.7 CM)	9-5/16" (23.7 CM)	14.0 LBS (6.4 KG)	22 LBS (10.0 KG)
DB7/10	IEC 90-B14	7-23/32" (19.6 CM)	17-7/32" (43.7 CM)	2-15/32" (6.3 CM)	4-29/32" (12.5 CM)	3-5/32" (8.0 CM)	3-15/16" (10.0 CM)	13/32" (1.0 CM)	13/32" (1.0 CM)	11.0 LBS (5.0 KG)	31 LBS (14.1 KG)
DB7/10	IEC 90-B5	7-23/32" (19.6 CM)	17-7/32" (43.7 CM)	2-15/32" (6.3 CM)	4-29/32" (12.5 CM)	3-5/32" (8.0 CM)	3-15/16" (10.0 CM)	13/32" (1.0 CM)	13/32" (1.0 CM)	16.5 LBS (7.5 KG)	31 LBS (14.1 KG)
DB7/10	IEC 90-B14	7-23/32" (19.6 CM)	17-7/32" (43.7 CM)	2-3/4" (7.0 CM)	5-1/2" (14.0 CM)	3-17/32" (9.0 CM)	3-15/16" (10.0 CM)	13/32" (1.0 CM)	9-7/8" (25.1 CM)	11.0 LBS (5.0 KG)	37.5 LBS (17.0 KG)
DB7/10	IEC 90-B5	7-23/32" (19.6 CM)	17-7/32" (43.7 CM)	2-3/4" (7.0 CM)	5-1/2" (14.0 CM)	3-17/32" (9.0 CM)	3-15/16" (10.0 CM)	13/32" (1.0 CM)	9-7/8" (25.1 CM)	16.5 LBS (7.5 KG)	37.5 LBS (17.0 KG)

NOTES:

- DIMENSIONS AND WEIGHTS ARE FOR REFERENCE ONLY.
- PUMP WEIGHT IS ESTIMATED USING POLYPROPYLENE COMPONENTS.

* DIMENSION DEPENDS UPON MOTOR MANUFACTURER.

** MOTOR WEIGHT DEPENDS UPON MOTOR MANUFACTURER AND STYLE OF MOTOR CHOSEN.

REVISIONS:

REV	DESCRIPTION	DATE	APPROV	TRACK

DESIGNER	DATE	SCALE	PROJECT	DESCRIPTION

STANDARD TITLE BLOCK	DATE	SCALE	PROJECT	DESCRIPTION

DB 7/10

R100509

0

DB7/10 Outline Dimensions - Union Housing (R100510)

Technical drawing showing front and side views of the DB7/10 Union Housing. Dimensions are labeled as follows:

- A:** 8 11/16" (22.1 cm)
- B:** Total length
- C:** Motor length
- D:** Motor diameter
- E:** Motor mounting flange diameter
- F:** Motor mounting flange offset
- G:** Motor mounting flange offset
- H:** Motor mounting flange offset
- I:** Motor mounting flange offset
- I':** Motor mounting flange offset

DB7/10	NEMA 56C	8-11/16" (22.1 CM)	18-15/16" (48.1 CM)	2-7/16" (6.2 CM)	4-7/8" (12.4 CM)	3-1/2" (8.9 CM)	11-7/16" (29.1 CM)	3" (7.6 CM)	11/32" (0.9 CM)	3-3/8" (8.6 CM)	10.5 LBS (4.8 KG)	28 LBS (12.7 KG)
DB7/10	NEMA 145TC	8-11/16" (22.1 CM)	19-7/16" (49.4 CM)	2-3/4" (7.0 CM)	5-1/2" (14.0 CM)	3-1/2" (8.9 CM)	11-5/16" (28.7 CM)	5" (12.7 CM)	11/32" (0.9 CM)	3-3/8" (8.6 CM)	10.5 LBS (4.8 KG)	32 LBS (14.5 KG)
DB7/10	IEC 63-B14 OR B5 FLANGE	9-1/8" (23.2 CM)	17-5/8" (44.0 CM)	1-3/16" (5.0 CM)	3-15/16" (10.0 CM)	2-15/32" (6.3 CM)	10-23/32" (27.2 CM)	3-5/32" (6.0 CM)	9/32" (0.7 CM)	3-3/8" (8.6 CM)	14.0 LBS (6.4 KG)	17 LBS (7.7 KG)
DB7/10	IEC 71-B14 OR B5 FLANGE	9-1/8" (23.2 CM)	17-5/8" (44.0 CM)	2-7/32" (5.6 CM)	4-19/32" (11.2 CM)	2-25/32" (7.1 CM)	10-29/32" (27.7 CM)	3-17/32" (6.0 CM)	9/32" (0.7 CM)	3-3/8" (8.6 CM)	14.0 LBS (6.4 KG)	22 LBS (10.0 KG)
DB7/10	IEC 80-B14	9-5/16" (23.7 CM)	18-13/16" (47.8 CM)	2-15/32" (6.3 CM)	4-29/32" (12.5 CM)	3-5/32" (8.0 CM)	11-7/32" (28.5 CM)	3-15/16" (10.0 CM)	13/32" (1.0 CM)	3-3/8" (8.6 CM)	11.0 LBS (5.0 KG)	31 LBS (14.1 KG)
DB7/10	IEC 80-B5	9-5/16" (23.7 CM)	18-13/16" (47.8 CM)	2-15/32" (6.3 CM)	4-29/32" (12.5 CM)	3-5/32" (8.0 CM)	11-7/32" (28.5 CM)	3-15/16" (10.0 CM)	13/32" (1.0 CM)	3-5/8" (9.2 CM)	11.0 LBS (5.0 KG)	31 LBS (14.1 KG)
DB7/10	IEC 90-B14	9-5/16" (23.7 CM)	18-13/16" (47.8 CM)	2-3/4" (7.0 CM)	5-1/2" (14.0 CM)	3-17/32" (9.0 CM)	11-5/32" (29.1 CM)	3-15/16" (10.0 CM)	13/32" (1.0 CM)	3-3/8" (8.6 CM)	11.0 LBS (5.0 KG)	37.5 LBS (17.0 KG)
DB7/10	IEC 90-B5	9-5/16" (23.7 CM)	18-13/16" (47.8 CM)	2-3/4" (7.0 CM)	5-1/2" (14.0 CM)	3-17/32" (9.0 CM)	11-5/32" (29.1 CM)	3-15/16" (10.0 CM)	13/32" (1.0 CM)	3-5/8" (9.2 CM)	16.5 LBS (7.5 KG)	37.5 LBS (17.0 KG)
PUMP MODEL	MOTOR FRAME	DIM 'A'	DIM 'B'	DIM 'C'	DIM 'D'	DIM 'E'	DIM 'F'	DIM 'G'	DIM 'H'	DIM 'I'	PUMP WT	MOTOR WT **

NOTES:

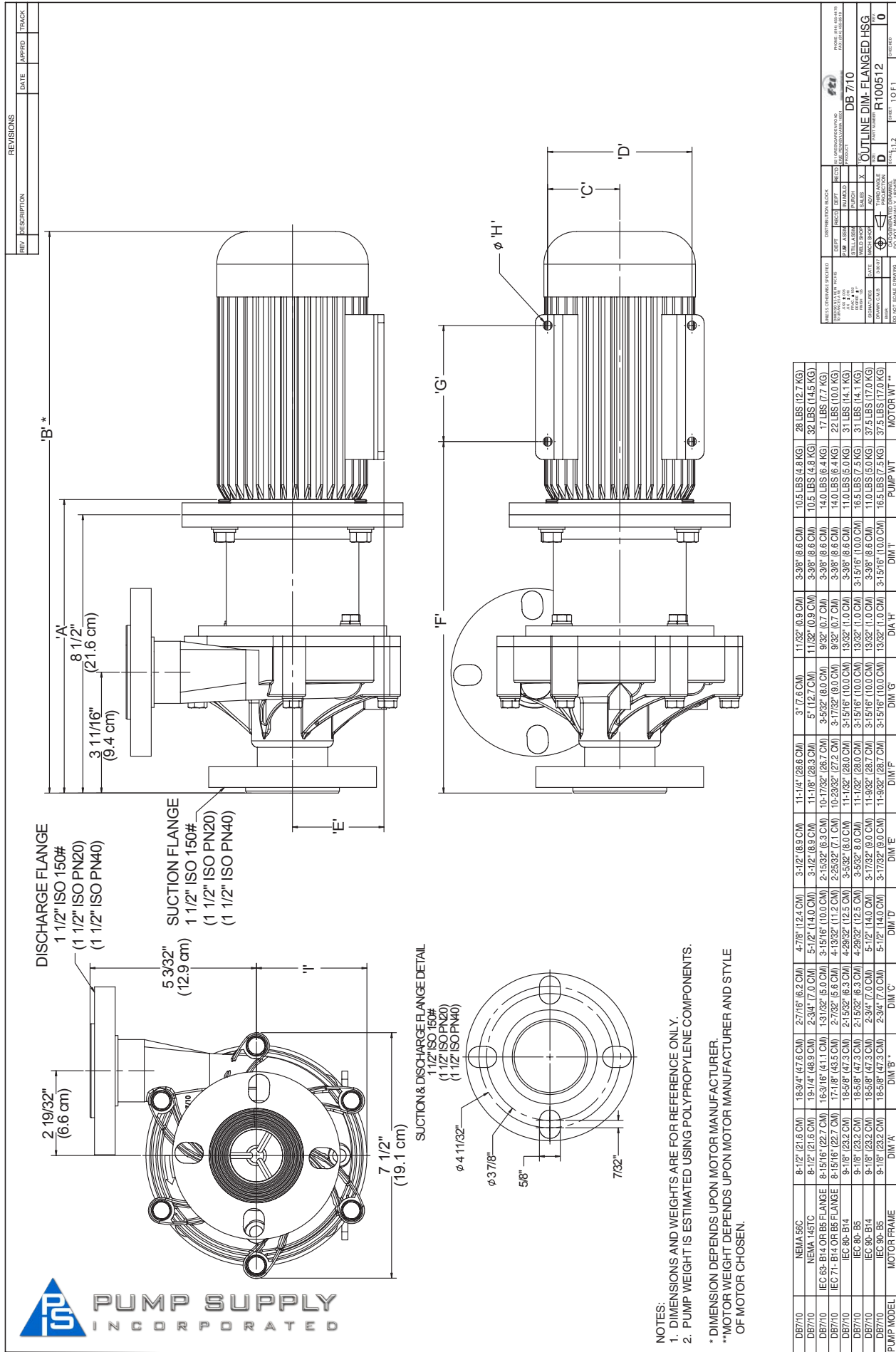
- DIMENSIONS AND WEIGHTS ARE FOR REFERENCE ONLY.
- PUMP WEIGHT IS ESTIMATED USING POLYPROPYLENE COMPONENTS.

* DIMENSION DEPENDS UPON MOTOR MANUFACTURER.
 ** MOTOR WEIGHT DEPENDS UPON MOTOR MANUFACTURER AND STYLE OF MOTOR CHOSEN.

PUMP SUPPLY INCORPORATED

REVISIONS: _____ DATE: _____ TRACK: _____

DB7/10 Outline Dimensions - Flange Housing (R100512)



DB11/15 OUTLINE DIMENSIONS - THREADED HOUSING (R100422)

PUMP MODEL	MOTOR FRAME	DM 'A'	DM B*	DM C*	DM 'D'	PUMP WT.	MOTOR WT.**
DB11/15	NEMA 56C FR.	8 17/32" (217mm)	20 17/32" (521mm)	3-3/4" (95 mm)	7-1/2" (191 mm)	27 lbs (12.2 kg)	31 lbs (14 kg)
DB11/15	NEMA 145 FR.	8 17/32" (217mm)	18 29/32" (480mm)	3-3/4" (95 mm)	7-1/2" (191 mm)	27 lbs (12.2 kg)	45 lbs (20 kg)
DB11/15	NEMA 184FR.	9 13/32" (239 mm)	22 6/32" (564mm)	3-3/4" (95 mm)	7-1/2" (191 mm)	27 lbs (12.2 kg)	84 lbs (38 kg)
DB11/15	IEC 80 FR.	9 5/32" (239mm)	19 11/16" (500mm)	3-3/4" (95 mm)	7-1/2" (191 mm)	27 lbs (12.2 kg)	35 lbs (16 kg)
DB11/15	IEC 90 FR.	9 5/32" (239mm)	19 7/8" (505mm)	3-3/4" (95 mm)	7-1/2" (191 mm)	27 lbs (12.2 kg)	50 lbs (23 kg)
DB11/15	EC 100 FR.	9 7/32" (234mm)	21 3/8" (543mm)	3-5/32" (80 mm)	6-10/32" (160 mm)	27 lbs (12.2 kg)	70 lbs (32 kg)
DB11/15	EC 112 FR.	9 7/32" (234mm)	21 7/8" (556mm)	3-3/4" (95 mm)	7-1/2" (191 mm)	27 lbs (12.2 kg)	88 lbs (40 kg)

NOTES:

1. ALL WEIGHTS ARE ESTIMATED AND FOR REFERENCE ONLY.
2. PUMP WEIGHT IS ESTIMATED USING POLYPROPYLENE PUMP COMPONENTS.

* DIMENSION DEPENDS UPON MOTOR MANUFACTURER AND STYLE OF MOTOR USED.
 ** MOTOR WEIGHT DEPENDS UPON MOTOR MANUFACTURER AND STYLE OF MOTOR USED.



REVISIONS		DATE	APPROVED	TRACK
REV	DESCRIPTION			

UNIVERSITY OF MICHIGAN LIBRARIES	DATE	BY	DESCRIPTION	PROJECT

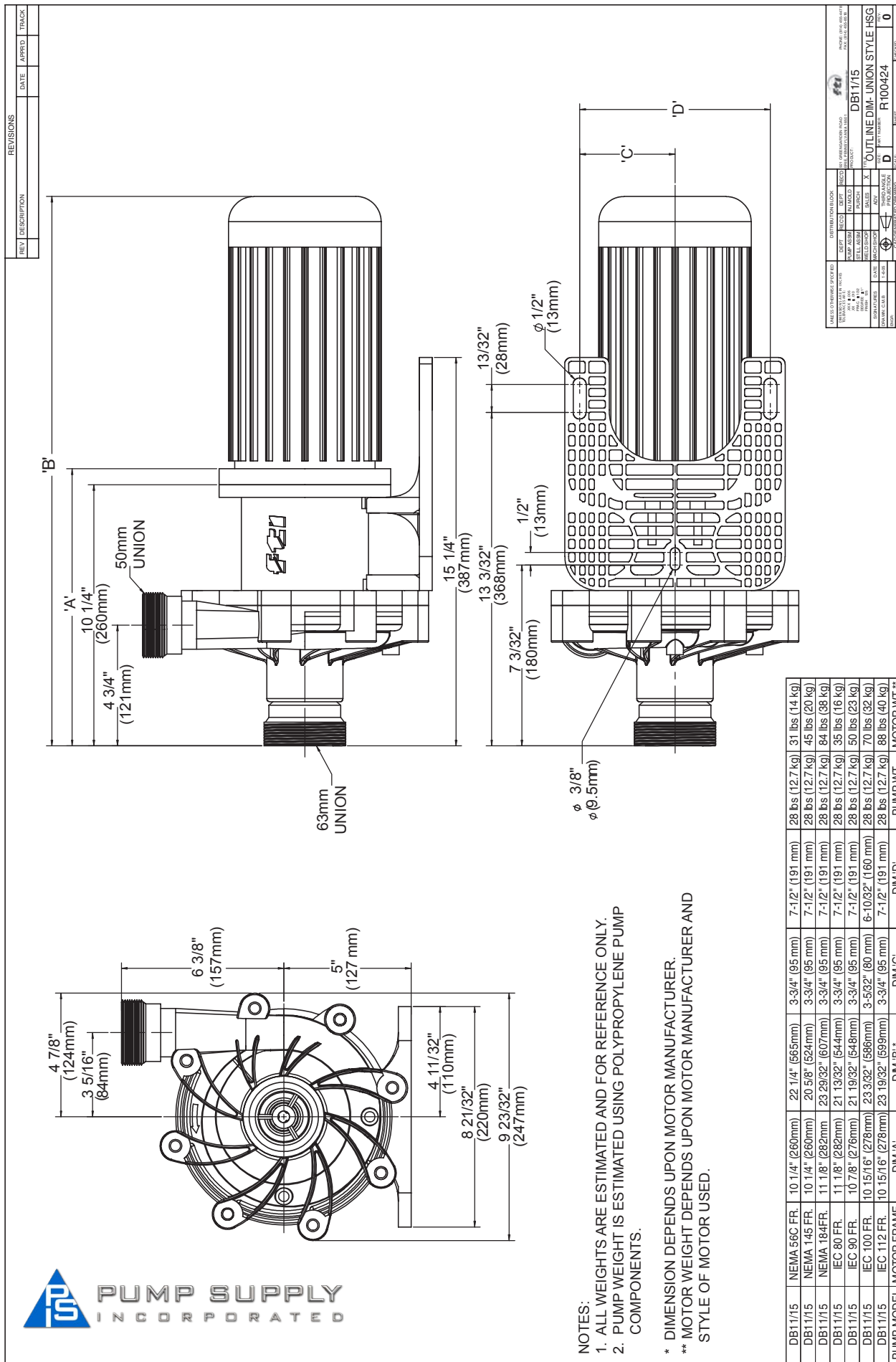
UNIVERSITY OF MICHIGAN LIBRARIES	DATE	BY	DESCRIPTION	PROJECT

UNIVERSITY OF MICHIGAN LIBRARIES	DATE	BY	DESCRIPTION	PROJECT

UNIVERSITY OF MICHIGAN LIBRARIES	DATE	BY	DESCRIPTION	PROJECT

UNIVERSITY OF MICHIGAN LIBRARIES	DATE	BY	DESCRIPTION	PROJECT

DB11/15 OUTLINE DIMENSIONS - UNION HOUSING (R100424)



REV	DESCRIPTION	DATE	APPROV	TRAC

UNITS	SCALE	DATE	REV	DESCRIPTION

NOTES:
 1. ALL WEIGHTS ARE ESTIMATED AND FOR REFERENCE ONLY.
 2. PUMP WEIGHT IS ESTIMATED USING POLYPROPYLENE PUMP COMPONENTS.
 * DIMENSION DEPENDS UPON MOTOR MANUFACTURER.
 ** MOTOR WEIGHT DEPENDS UPON MOTOR MANUFACTURER AND STYLE OF MOTOR USED.



DB11/15 OUTLINE DIMENSIONS - FLANGED HOUSING (R100423)

REV#	DESCRIPTION	DATE	APPROV	TRACK

DISCHARGE FLANGE
1.5" ANSI 150#
(1.5" ISO PN20)
(1.5" ISO PN40)

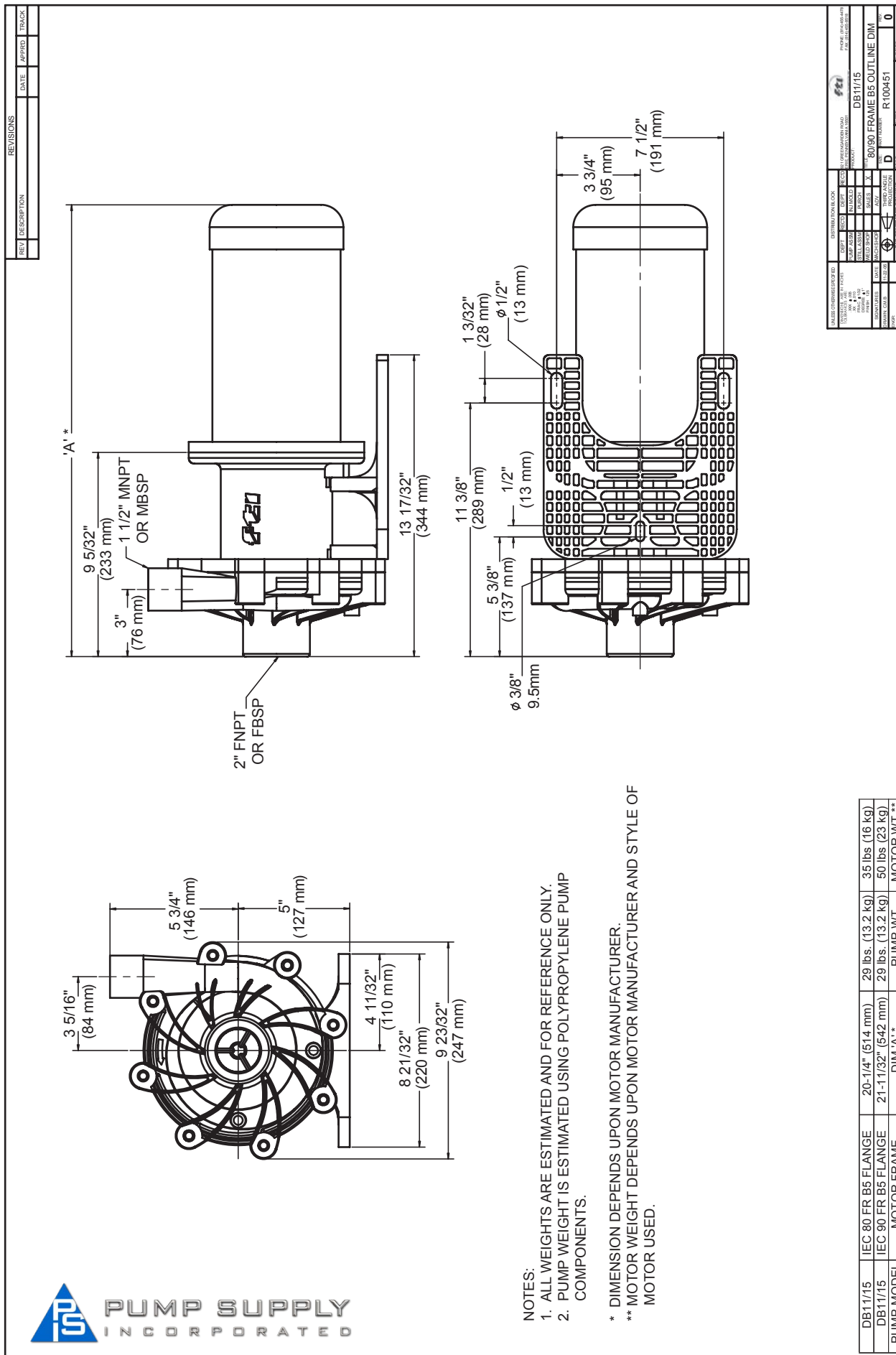
SUCTION FLANGE E
2" ANSI 150#
(2" ISO PN40)

NOTES:
1. ALL WEIGHTS ARE ESTIMATED AND FOR REFERENCE ONLY.
2. PUMP WEIGHT IS ESTIMATED USING POLYPROPYLENE PUMP COMPONENTS.
* DIMENSION DEPENDS UPON MOTOR MANUFACTURER.
** MOTOR WEIGHT DEPENDS UPON MOTOR MANUFACTURER AND STYLE OF MOTOR USED.

PUMP MODEL	MOTOR FRAME	DIM 'A'	DIM 'B'	DIM 'C'	DIM 'D'	PUMP WT.	MOTOR WT.**
DB11/15	NEMA 56C FR.	9 29/32" (252mm)	21 29/32" (556mm)	3-3/4" (95 mm)	7-1/2" (191 mm)	30 lbs (13.6 kg)	31 lbs (14 kg)
DB11/15	NEMA 145 FR.	9 29/32" (252mm)	20 9/32" (519mm)	3-3/4" (95 mm)	7-1/2" (191 mm)	30 lbs (13.6 kg)	45 lbs (20 kg)
DB11/15	NEMA 184FR.	10 25/32" (274 mm)	23 18/32" (598mm)	3-3/4" (95 mm)	7-1/2" (191 mm)	30 lbs (13.6 kg)	84 lbs (38 kg)
DB11/15	IEC 80 FR.	10 17/32" (267mm)	21 1/16" (535mm)	3-3/4" (95 mm)	7-1/2" (191 mm)	30 lbs (13.6 kg)	35 lbs (16 kg)
DB11/15	IEC 90 FR.	10 17/32" (267mm)	21 1/4" (540mm)	3-3/4" (95 mm)	7-1/2" (191 mm)	30 lbs (13.6 kg)	50 lbs (23 kg)
DB11/15	IEC 100 FR.	10 19/32" (269mm)	22 3/4" (586mm)	3-5/32" (80 mm)	6-10/32" (160 mm)	30 lbs (13.6 kg)	70 lbs (32 kg)
DB11/15	IEC 112 FR.	10 19/32" (269mm)	23 1/4" (591mm)	3-3/4" (95 mm)	7-1/2" (191 mm)	30 lbs (13.6 kg)	88 lbs (40 kg)
PUMP MODEL	MOTOR FRAME	DIM 'A'	DIM 'B'	DIM 'C'	DIM 'D'	PUMP WT.	MOTOR WT.**

DESIGNATION BLOCK		DB11/15
REV#	DESCRIPTION	R 100423
DATE	APPROV	

DB11/15 OUTLINE DIMENSIONS - UNION HSG - 80-90 FR B5 (R100452)



REVISIONS		DATE	APPROV	TRACK
REV	DESCRIPTION			

DESIGNED BY	DATE	SCALE	PROJECT NO.	PROJECT NAME
CHECKED BY				
APPROVED BY				
DATE				
SCALE				
PROJECT NO.				
PROJECT NAME				
DRAWN BY				
CHECKED BY				
APPROVED BY				
DATE				
SCALE				
PROJECT NO.				
PROJECT NAME				

NOTES:
 1. ALL WEIGHTS ARE ESTIMATED AND FOR REFERENCE ONLY.
 2. PUMP WEIGHT IS ESTIMATED USING POLYPROPYLENE PUMP COMPONENTS.
 * DIMENSION DEPENDS UPON MOTOR MANUFACTURER.
 ** MOTOR WEIGHT DEPENDS UPON MOTOR MANUFACTURER AND STYLE OF MOTOR USED.

PUMP MODEL	MOTOR FRAME	MOTOR FRAME	DIM 'A' **	PUMP WT	MOTOR WT **
DB11/15	IEC 80 FR B5 FLANGE	20-1/4" (514 mm)	29 lbs. (13.2 kg)	35 lbs (16 kg)	
DB11/15	IEC 90 FR B5 FLANGE	21-11/32" (542 mm)	29 lbs. (13.2 kg)	50 lbs (23 kg)	

DB11/15 OUTLINE DIMENSIONS - FLANGE HSG - 80-90 FR B5 (R100453)

SUCTION FLANGE
2" ANSI 150#
(2" ISO PN20)
(2" ISO PN40)

DISCHARGE FLANGE
1.5" ANSI 150#
(1.5" ISO PN20)
(1.5" ISO PN40)

NOTES:

1. ALL WEIGHTS ARE ESTIMATED AND FOR REFERENCE ONLY.
2. PUMP WEIGHT IS ESTIMATED USING POLYPROPYLENE PUMP COMPONENTS.

* DIMENSION DEPENDS UPON MOTOR MANUFACTURER.
** MOTOR WEIGHT DEPENDS UPON MOTOR MANUFACTURER AND STYLE OF MOTOR USED.

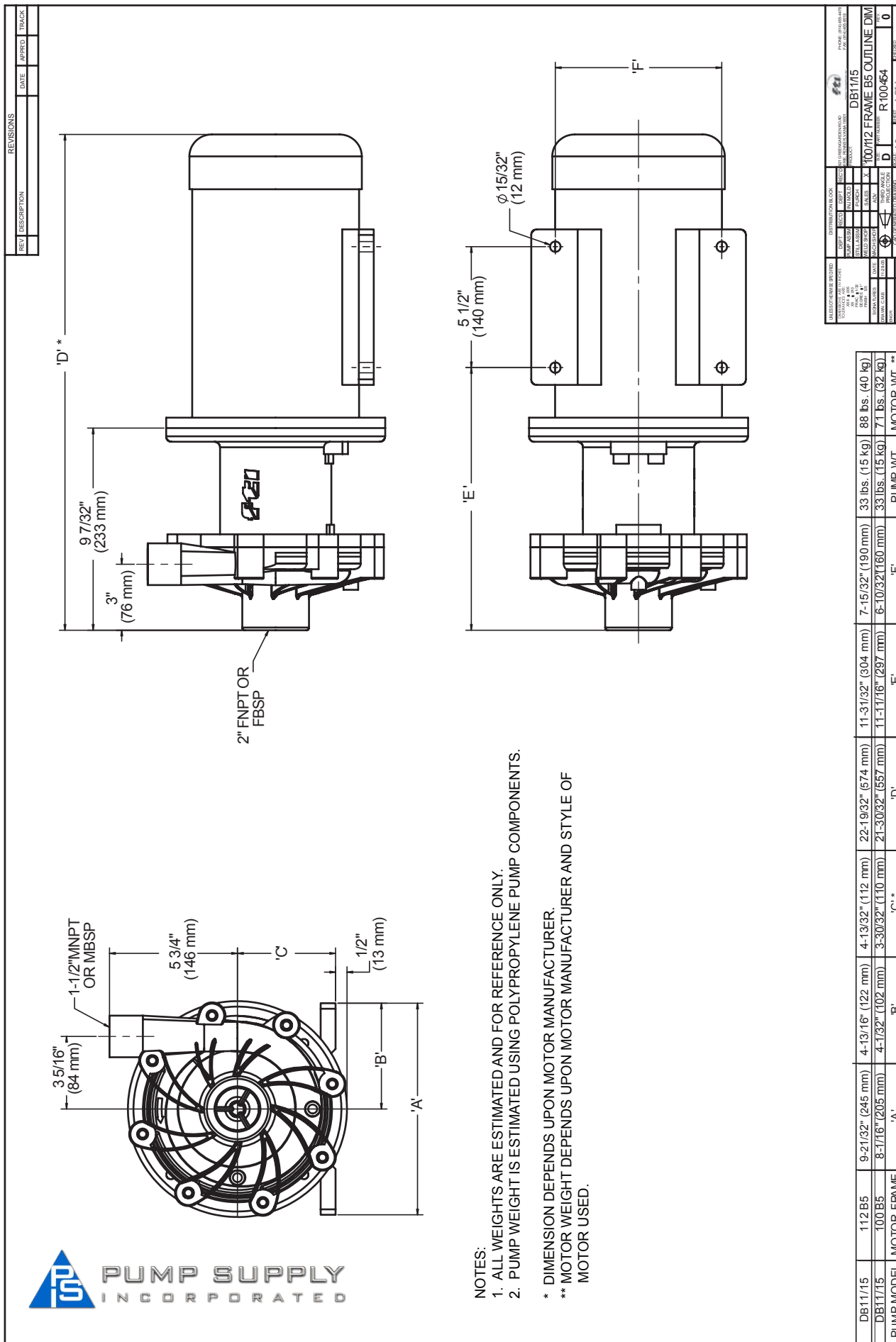
REVISIONS		DATE	APPROV	TRACK
REV	DESCRIPTION			

USER COMMENTS/NOTES		DISTRIBUTION BLOCK	
TOTAL QTY	1	QTY	1
QTY IN STOCK	0	QTY IN STOCK	0
QTY ON ORDER	0	QTY ON ORDER	0
QTY IN TRANSIT	0	QTY IN TRANSIT	0
QTY IN WAREHOUSE	0	QTY IN WAREHOUSE	0
QTY IN PROCESS	0	QTY IN PROCESS	0
QTY IN RECEIVING	0	QTY IN RECEIVING	0
QTY IN SHIPMENT	0	QTY IN SHIPMENT	0
QTY IN DELIVERY	0	QTY IN DELIVERY	0
QTY IN RECEIPT	0	QTY IN RECEIPT	0
QTY IN INVENTORY	0	QTY IN INVENTORY	0
QTY IN HOLDING	0	QTY IN HOLDING	0
QTY IN QUANTITY	0	QTY IN QUANTITY	0
QTY IN RECEIPT	0	QTY IN RECEIPT	0
QTY IN INVENTORY	0	QTY IN INVENTORY	0
QTY IN HOLDING	0	QTY IN HOLDING	0
QTY IN QUANTITY	0	QTY IN QUANTITY	0
QTY IN RECEIPT	0	QTY IN RECEIPT	0
QTY IN INVENTORY	0	QTY IN INVENTORY	0
QTY IN HOLDING	0	QTY IN HOLDING	0
QTY IN QUANTITY	0	QTY IN QUANTITY	0

DB11/15	IEC 80 FR B5 FLANGE	21.58" (549 mm)	31 lbs. (14.1 kg)	35 lbs. (16 kg)
DB11/15	IEC 90 FR B5 FLANGE	22.25" (579 mm)	31 lbs. (14.1 kg)	50 lbs. (23 kg)
PUMP MODEL	MOTOR FRAME	DIM A*	PUMP WT	MOTOR WT **

DB11/15	8090 FR. B5 OUTLINE DIM/ FLANGES	REV. 1
DB11/15	R100453	REV. 1
DB11/15	0	REV. 1

DB11/15 OUTLINE DIMENSIONS - THREADED HSG - 100-112 FR B5 (R100454)



REVISIONS			
REV	DESCRIPTION	DATE	APPRD

MATERIALS		DISTRIBUTION		PRODUCT	
ITEM	DESCRIPTION	ITEM	DESCRIPTION	ITEM	DESCRIPTION

ITEM	DESCRIPTION	ITEM	DESCRIPTION

ITEM	DESCRIPTION	ITEM	DESCRIPTION

ITEM	DESCRIPTION	ITEM	DESCRIPTION

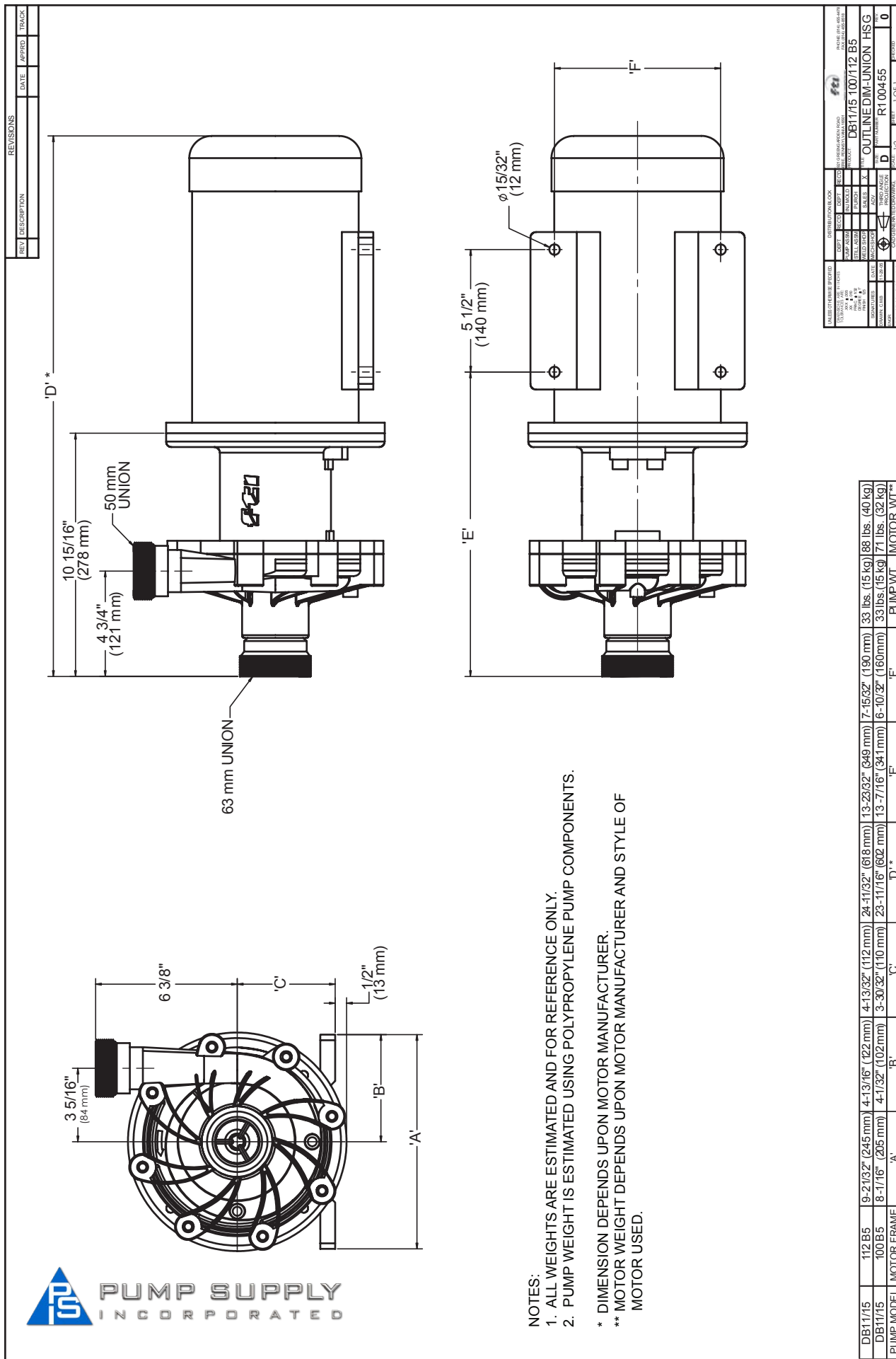
ITEM	DESCRIPTION	ITEM	DESCRIPTION

PUMP MODEL	MOTOR FRAME	'A'	'B'	'C'*	'D'	'E'	'F'	PUMP WT.	MOTOR WT.
DB11/15	112 B5	9-21/32" (245 mm)	4-13/16" (122 mm)	4-13/32" (112 mm)	22-19/32" (574 mm)	11-31/32" (304 mm)	7-15/32" (190 mm)	33 lbs. (15 kg)	88 lbs. (40 kg)
DB11/15	100 B5	8-1/16" (205 mm)	4-1/32" (102 mm)	3-30/32" (110 mm)	21-30/32" (557 mm)	11-11/16" (297 mm)	6-10/32" (160 mm)	33 lbs. (15 kg)	71 lbs. (32 kg)

NOTES:
 1. ALL WEIGHTS ARE ESTIMATED AND FOR REFERENCE ONLY.
 2. PUMP WEIGHT IS ESTIMATED USING POLYPROPYLENE PUMP COMPONENTS.
 * DIMENSION DEPENDS UPON MOTOR MANUFACTURER.
 ** MOTOR WEIGHT DEPENDS UPON MOTOR MANUFACTURER AND STYLE OF MOTOR USED.



DB11/15 OUTLINE DIMENSIONS - UNION HSG - 100-112 FR B5 (R100455)



REV. DESCRIPTION		DATE	APPRD.	TRACK																
REVISIONS																				
<table border="1"> <tr> <th>CLASSIFICATION</th> <th>DESIGN</th> <th>ENGINEERING</th> <th>MANUFACTURING</th> <th>SALES</th> <th>MARKETING</th> <th>FINANCE</th> <th>INVENTORY</th> </tr> <tr> <td> </td> <td> </td> <td> </td> <td> </td> <td> </td> <td> </td> <td> </td> <td> </td> </tr> </table>					CLASSIFICATION	DESIGN	ENGINEERING	MANUFACTURING	SALES	MARKETING	FINANCE	INVENTORY								
CLASSIFICATION	DESIGN	ENGINEERING	MANUFACTURING	SALES	MARKETING	FINANCE	INVENTORY													
DB11/15 100/112 B5 OUTLINE DIM-UNION HSG		R100455			1 OF 1															

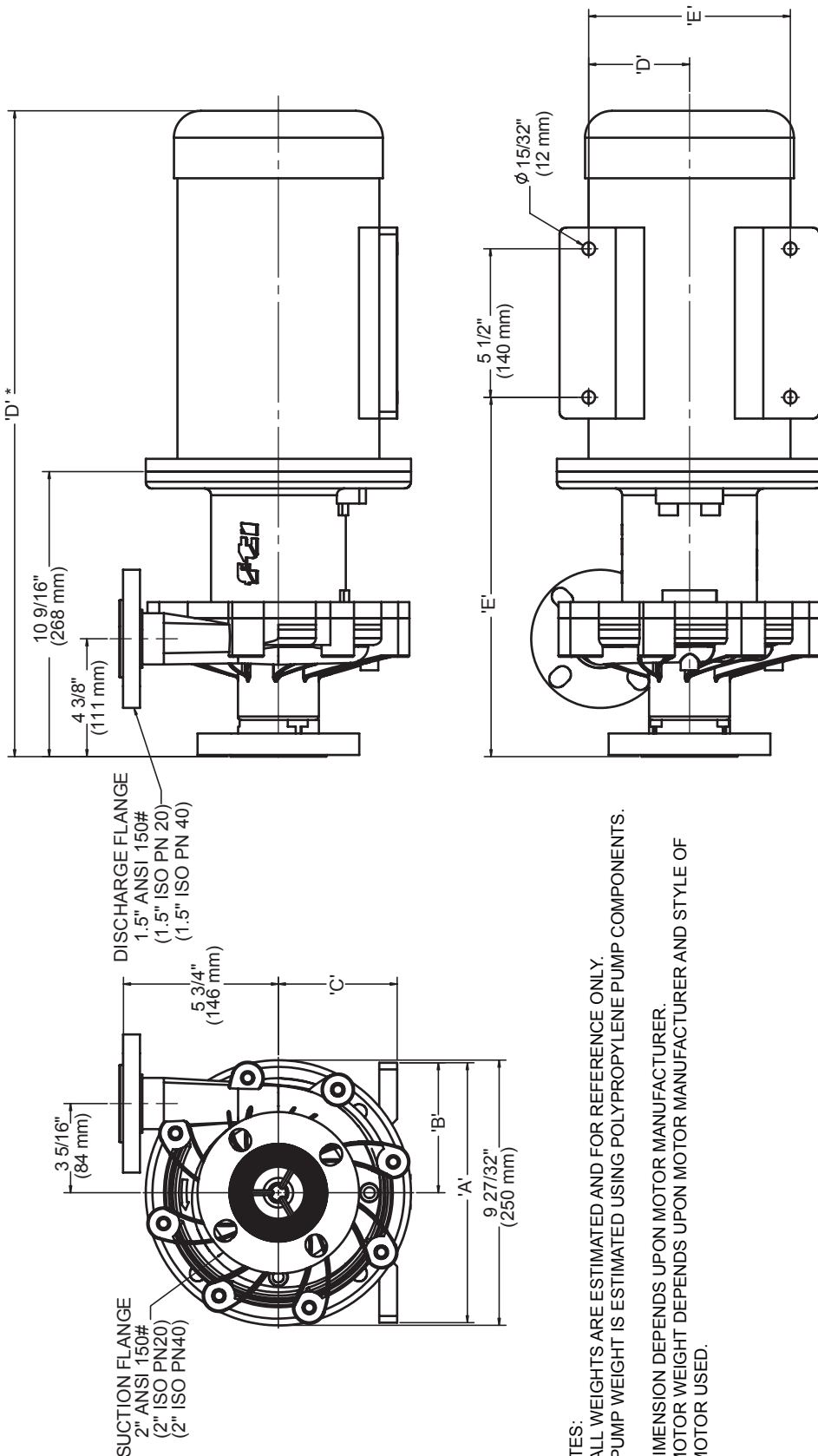
DB11/15	112 B5	9-2 1/32" (245 mm)	4-13/16" (122 mm)	4-13/32" (112 mm)	24-11/32" (618 mm)	13-23/32" (949 mm)	7-15/32" (190 mm)	33 lbs. (15 kg)	88 lbs. (40 kg)
DB11/15	100 B5	8-1/16" (205 mm)	4-7/32" (102 mm)	3-30/32" (110 mm)	23-11/16" (602 mm)	13-7/16" (341 mm)	6-70/32" (160 mm)	33 lbs. (15 kg)	71 lbs. (32 kg)
PUMP MODEL	MOTOR FRAME	'A'	'B'	'C'	'D'*	'E'	'F'	PUMP WT.	MOTOR WT.**

NOTES:
 1. ALL WEIGHTS ARE ESTIMATED AND FOR REFERENCE ONLY.
 2. PUMP WEIGHT IS ESTIMATED USING POLYPROPYLENE PUMP COMPONENTS.
 * DIMENSION DEPENDS UPON MOTOR MANUFACTURER.
 ** MOTOR WEIGHT DEPENDS UPON MOTOR MANUFACTURER AND STYLE OF MOTOR USED.

DB11/15 OUTLINE DIMENSIONS - FLANGE HSG - 100-112 FR B5 (R100456)



REV.	DESCRIPTION	DATE	APPRO.	TRACK



NOTES:
 1. ALL WEIGHTS ARE ESTIMATED AND FOR REFERENCE ONLY.
 2. PUMP WEIGHT IS ESTIMATED USING POLYPROPYLENE PUMP COMPONENTS.
 * DIMENSION DEPENDS UPON MOTOR MANUFACTURER.
 ** MOTOR WEIGHT DEPENDS UPON MOTOR MANUFACTURER AND STYLE OF MOTOR USED.

REVISION	DATE	APPROVED	TRACK

MODEL	DISCHARGE FLANGE	SUCTION FLANGE	WEIGHT (kg)	WEIGHT (lbs)
DB11/15	1.5" ISO PN 20	2" ISO PN 20	33	73
DB11/15	1.5" ISO PN 40	2" ISO PN 40	88	193

DB22 Outline Dimensions - Threaded Housing

REV	DESCRIPTION	DATE	APPROV	TRACK

DATE	DESCRIPTION	BY	CHKD	APPD	TRK

NOTES:

1. DIMENSIONS AND WEIGHTS ARE TO BE USED FOR REFERENCE ONLY.
2. PUMP WEIGHT IS ESTIMATED USING POLYPROPYLENE PUMP COMPONENTS.

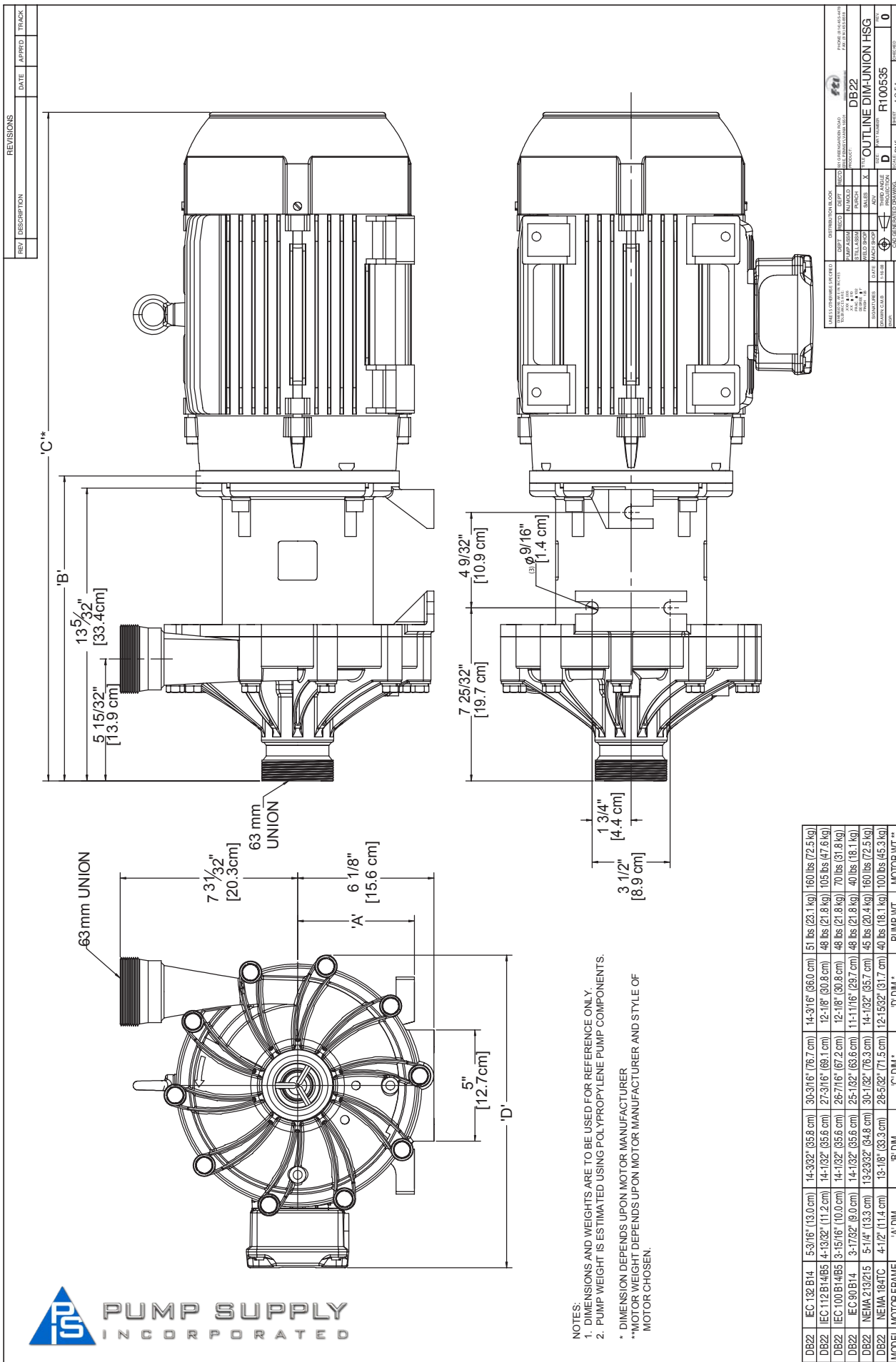
* DIMENSION DEPENDS UPON MOTOR MANUFACTURER
 ** MOTOR WEIGHT DEPENDS UPON MOTOR MANUFACTURER AND STYLE OF MOTOR CHOSEN.

MODEL	MOTOR FRAME	'A' DIM	'B' DIM	'C' DIM*	'D' DIM*	PUMP WT	MOTOR WT**
DB22	IEC 132 B14	5-3/16" (13.0 cm)	12-3/8" (31.4 cm)	28-15/32" (72.3 cm)	14-3/16" (36.0 cm)	51 lbs (23.1 kg)	160 lbs (72.5 kg)
DB22	IEC 112 B14/B5	4-13/32" (11.2 cm)	12-5/16" (31.2 cm)	25-15/32" (64.7 cm)	12-1/8" (30.8 cm)	48 lbs (21.8 kg)	105 lbs (47.6 kg)
DB22	IEC 100 B14/B5	3-15/16" (10.0 cm)	12-5/16" (31.2 cm)	24-23/32" (62.8 cm)	12-1/8" (30.8 cm)	48 lbs (21.8 kg)	70 lbs (31.8 kg)
DB22	IEC 90 B14	3-17/32" (9.0 cm)	12-5/16" (31.2 cm)	23-5/16" (59.2 cm)	11-11/16" (29.7 cm)	48 lbs (21.8 kg)	40 lbs (18.1 kg)
DB22	NEMA 213/215	5-1/4" (13.3 cm)	12" (30.5 cm)	28-5/16" (71.9 cm)	14-1/32" (35.7 cm)	45 lbs (20.4 kg)	160 lbs (72.5 kg)
DB22	NEMA 184TC	4-1/2" (11.4 cm)	11-13/32" (29.0 cm)	26-7/16" (67.2 cm)	12-15/32" (31.7 cm)	40 lbs (18.1 kg)	100 lbs (45.3 kg)
		'A' DIM	'B' DIM	'C' DIM*	'D' DIM*	PUMP WT	MOTOR WT**

DATE	DESCRIPTION	BY	CHKD	APPD	TRK



DB22 Outline Dimensions - Union Housing



DB22 Outline Dimensions - Flange Housing

**PUMP SUPPLY
INCORPORATED**

REVISIONS		DATE	APPROV	TRACK
REV	DESCRIPTION			
1	ADDED ISO IEC DIMENSIONS	08/27/12	DOB	
2	ADDED 47/32" IN FRONT VIEW	10/22/12	IND	

UNLESS OTHERWISE SPECIFIED				
SYMBOL	DEFINITION	DIMENSIONAL BASIS	UNIT	UNLESS OTHERWISE SPECIFIED
ASSEMBLY	ASSEMBLY	ASSEMBLY		
DESIGN	DESIGN	DESIGN		
FIELD	FIELD	FIELD		
MANUFACTURE	MANUFACTURE	MANUFACTURE		
DATE	DATE	DATE		
DRAWN/CAD	1-10-08	1-10-08		
CHK				
DO NOT SCALE DRAWING	DO NOT SCALE DRAWING	DO NOT SCALE DRAWING		
DISTRIBUTION BLOCK				
DEPT	REC'D	DEPT	REC'D	DATE
	IN MTD		IN MTD	
SELLER'S	POKER	SELLER'S	POKER	
PROJ NUMBER	D	THIRD ANGLE	X	PROJECTION
MODEL	DB22	DESCRIPTION	OUTLINE DIM- FLANGED HSG	
PROJ NUMBER	R100536	SCALE	1	
DATE		DESIGNER	1 OF 1	
CHK		DRAWN		

NOTES:
 1. DIMENSIONS AND WEIGHTS ARE TO BE USED FOR REFERENCE ONLY
 2. PUMP WEIGHT IS ESTIMATED USING POLYPROPYLENE PUMP COMPONENTS
 * DIMENSION DEPENDS UPON MOTOR MANUFACTURER
 ** MOTOR WEIGHT DEPENDS UPON MOTOR MANUFACTURER AND STYLE OF MOTOR CHOSEN

MODEL	MOTOR FRAME	A DIM	B DIM	C DIM*	D DIM*	PUMP WT	MOTOR WT**		
DB22	IEC 132 B 14B5	5-3/16"	113.0 cm	14-3/16"	37.5 cm	30-5/16"	77.0 cm	51 lbs (23.1 kg)	160 lbs (72.5 kg)
DB22	IEC 112 B 14B5	4-13/32"	111.2 cm	13-11/16"	34.8 cm	26-27/32"	66.2 cm	42 lbs (19.1 kg)	135 lbs (61.3 kg)
DB22	IEC 100 B 14B5	3-11/16"	91.0 cm	12-1/8"	30.8 cm	22-1/8"	56.9 cm	36 lbs (16.3 kg)	105 lbs (47.6 kg)
DB22	EC 90 B 14B5	3-17/32"	89.0 cm	12-1/8"	30.8 cm	20-3/32"	51.8 cm	30 lbs (13.6 kg)	90 lbs (40.8 kg)
DB22	NEMA 213215	5-1/4"	133.0 cm	13-11/16"	34.8 cm	24-11/16"	62.7 cm	40 lbs (18.1 kg)	140 lbs (63.5 kg)
DB22	NEMA 182764TC	4-1/2"	111.4 cm	12-5/8"	32.5 cm	20-11/16"	52.1 cm	36 lbs (16.3 kg)	120 lbs (54.4 kg)
DB22	NEMA 143764TC	3-1/2"	89.0 cm	11-23/32"	29.8 cm	18-1/8"	46.7 cm	32 lbs (14.5 kg)	100 lbs (45.3 kg)

