



Wilfley

Centrifugal Acid Pump

Technical Handbook

Model AF



WILFLEY

Wilfley AF Pumps

The Wilfley Model AF is an end-suction, single stage, sealless (no packing, water glands or conventional mechanical seals) centrifugal pump. It handles solutions that are highly corrosive and abrasive. Discharge sizes range from 1/4" to 14" in diameter. Flow rates range from 4 gallons a minute to 10,000 per minute.

Sealless Operation

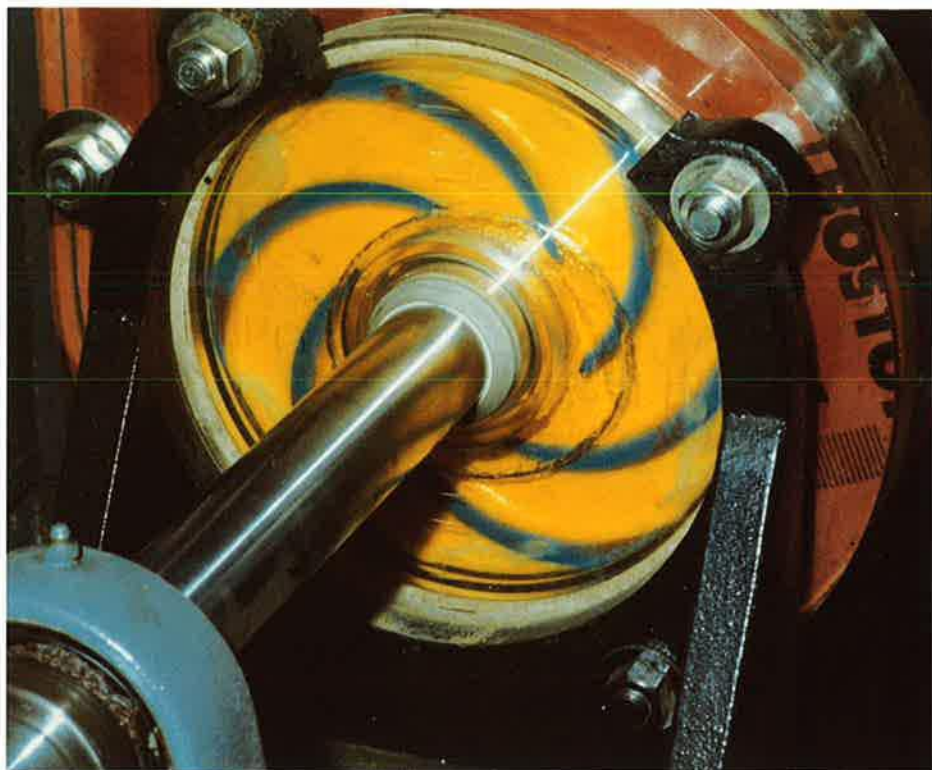
All Wilfley pumps are designed to be used without packing, water glands or conventional mechanical seals. To prevent leaking while running, AF pumps have a secondary impeller, the original Wilfley expeller, which creates a hydraulic seal. This hydraulic seal keeps the solution away from the shaft while the pump is operating. The impeller and expeller rotate together during operation.

Static seal faces prevent leakage when the pump is shut down. The pump remains leak free while running and while shut down.

Wilfley pumps can be run dry without damaging internal parts because wetted parts operate freely with no rubbing contact. Constant down time to repair and replace conventional contact seals is eliminated. Parts for all Wilfley pumps are designed for quick interchangeability resulting in minimum repair time.

Quality Control

Model AF pumps are thoroughly tested and inspected throughout each phase of production. All parts are 100% inspected during fabrication and installation. Cases are pressure tested to insure strength and durability. *Every AF pump is placed on a test track and operated to the exact performance specified before shipment.*



Wilfley hydraulic seal in actual operation.

The Wilfley organization is proud of the individual engineering service traditionally provided to customers. Each pump is made to perform to exact specifications. Wilfley also extends the same engineering service at no charge whenever the pumping conditions change.

Materials

A. R. Wilfley and Sons produces AF centrifugal Pumps from many materials. Wilfley can provide pumps with special combinations of alloys and non-metallic materials. Wilfley's engineering staff has

the expertise and experience to make material recommendations. To assist material selection Wilfley maintains an extensive library of pump services and corrosion/abrasive data. Wilfley is continually testing the effects of both abrasion and corrosion on a wide variety of materials.

Many types of stainless steel are used in the manufacture of Wilfley pumps. The most common are Alloy 20, 316, and CD4MCu. Other alloys are available.



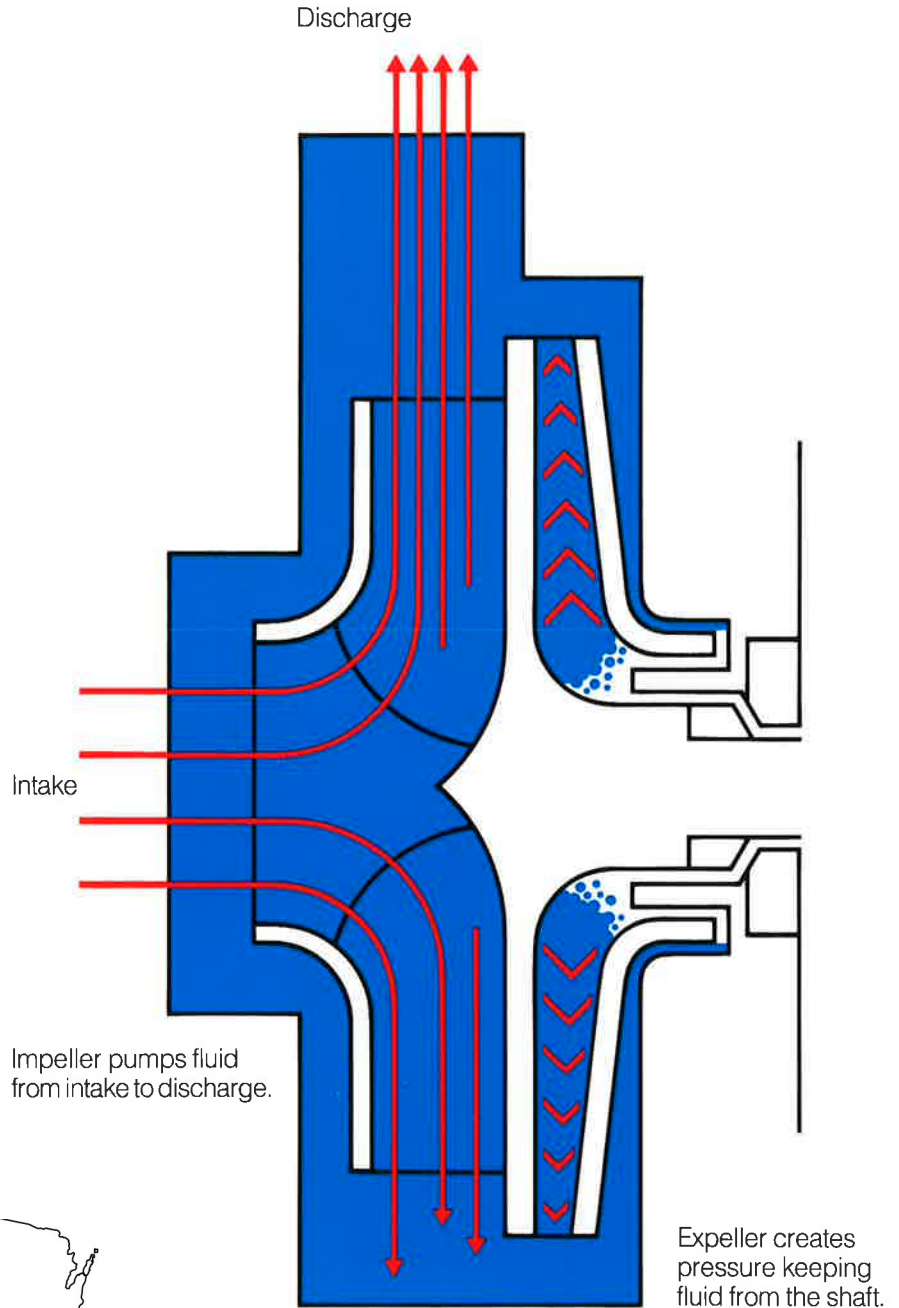
Many non-metallic materials are available in Wilfley Model AF Pumps including Wilfley's proprietary material W-30 which is a modified phenol formaldehyde resin, W-35 which is a modified vinyl ester, W-50 which is a modified furfural ketone resin, and Tefzel_®.

Special Modifications

A. R. Wilfley & Sons is dedicated to providing pumps that utilize their full potential. Wilfley routinely accommodates customer requirements such as steam-jackets, special paint, flush ports, special drain plugs, and other modifications required to fit specific needs. Many applications require special motor and drive configurations, including sub bases and mounting brackets. Non-metallic sub bases are available. Wilfley engineers assist in any special configuration that the solution and process requires. Wilfley's famous high quality workmanship applies to all special modifications.

Product Line

Wilfley manufactures a wide range of centrifugal pumps for both the chemical processing and mining industries. Wilfley pumps are available to handle highly abrasive slurries containing large particles, as well as ANSI B73.1 pumps to handle corrosive materials. Wilfley's applications and sales engineering staff provides the most up to date information and technology on pumps and pump processes.



Expeller creates pressure keeping fluid from the shaft.



Wilfley AF Pumps

Rotary and stationary seal faces are open during operation and closed to prevent leakage when the pump is shut down. Parts tinted in blue move forward to open seal faces when the pump is started.

Shaft sleeves protect the shaft from liquid contact and provide a labyrinth centrifugal seal to prevent liquid from reaching the bearings.

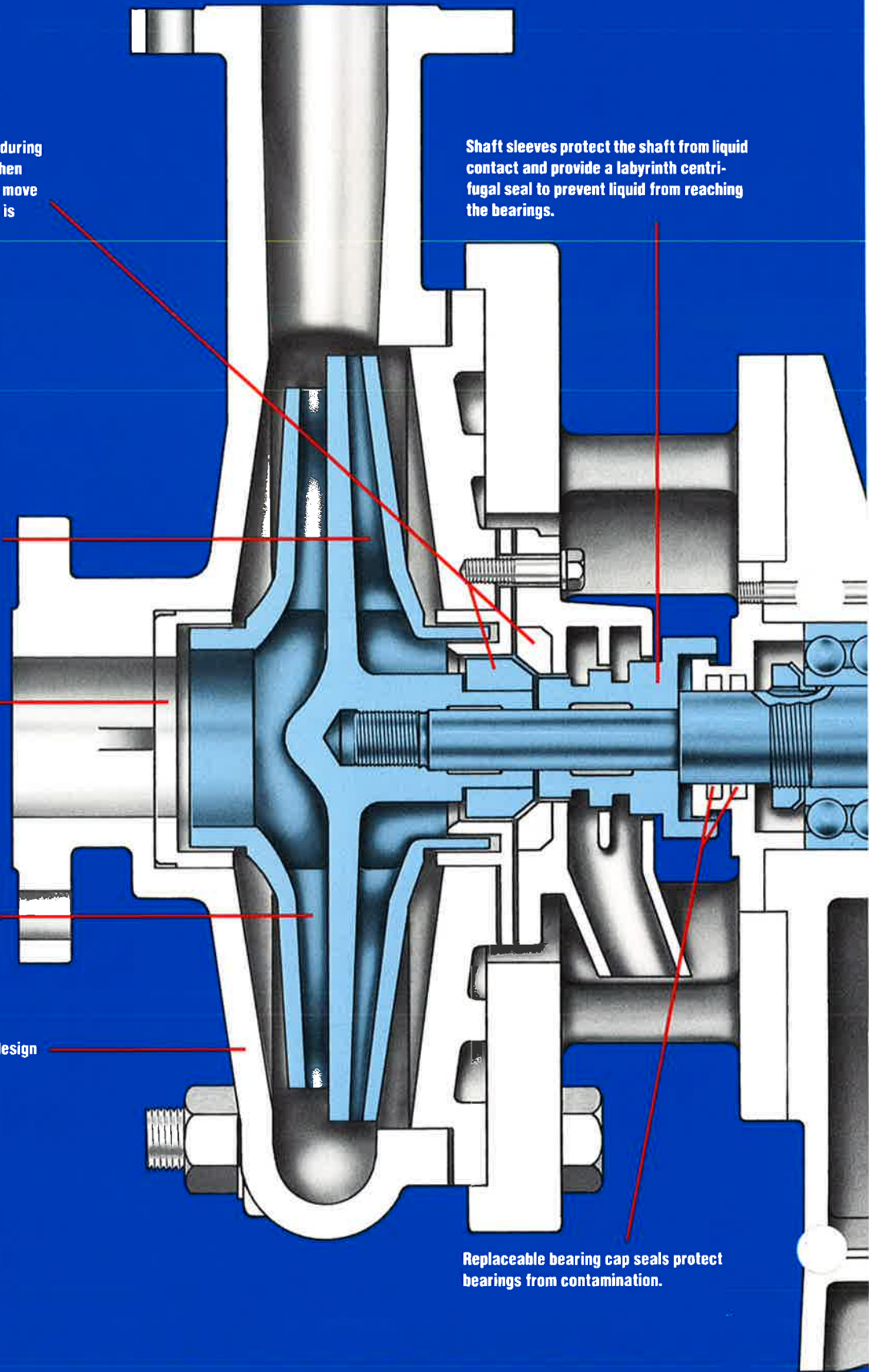
The integrated Wilfley expeller provides a positive hydraulic sealing arrangement eliminating packing, water glands, and mechanical seals.

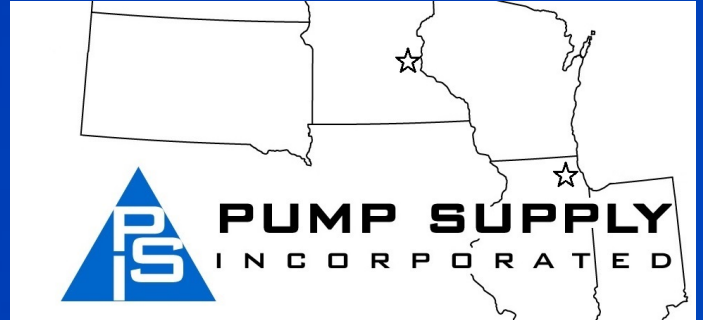
The replaceable case wear ring protects the case from excessive wear and maintains efficiency.

Large impeller vanes provide highly efficient pumping with long wear life.

The extra case wall thickness and unique design extends wear life.

Replaceable bearing cap seals protect bearings from contamination.





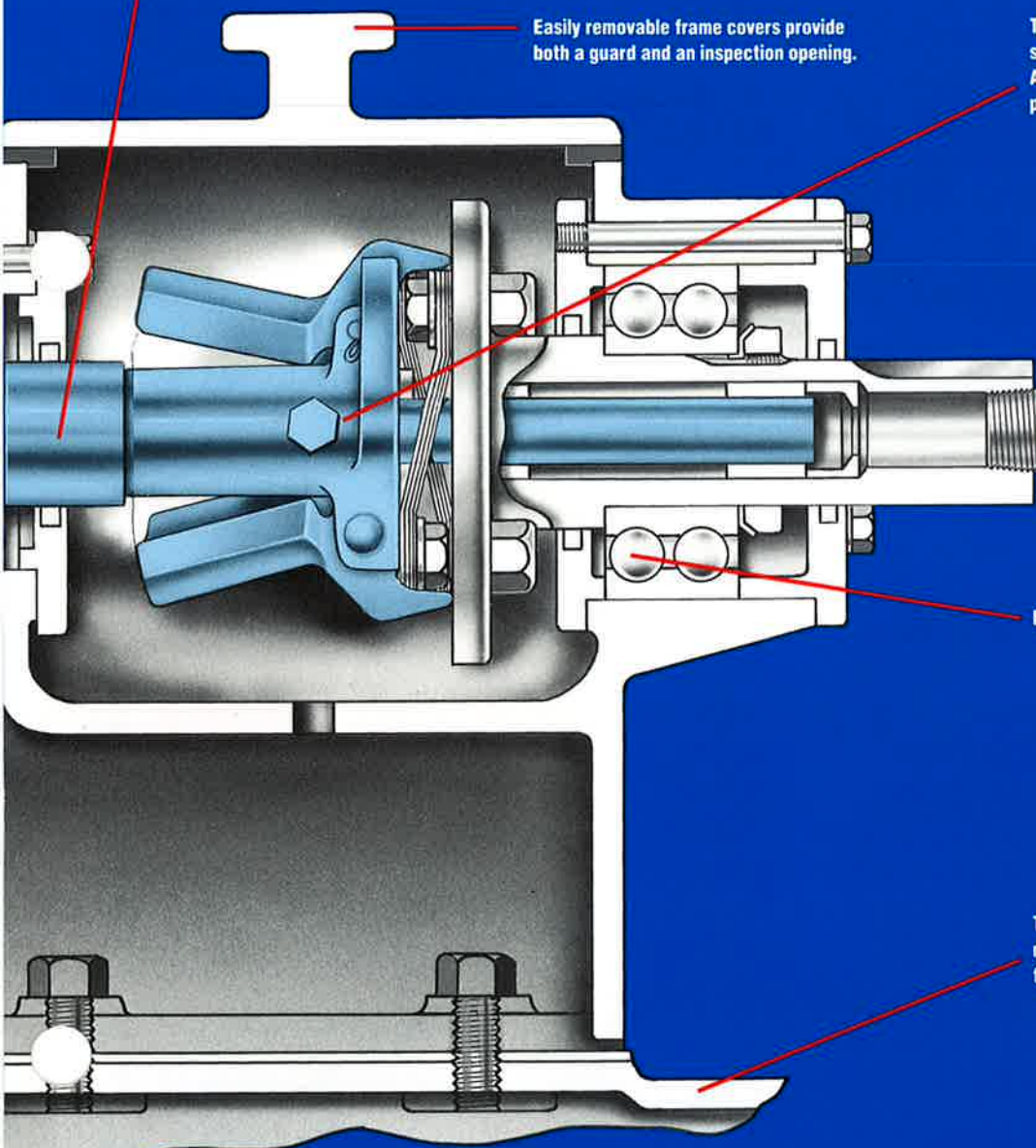
Shafts are made of extra strength high quality steel.

Easily removable frame covers provide both a guard and an inspection opening.

The centrifugally operated governor provides smooth and efficient seal opening and closing. Assembly is totally enclosed to isolate all moving parts.

Extra large bearings provide a long durable life.

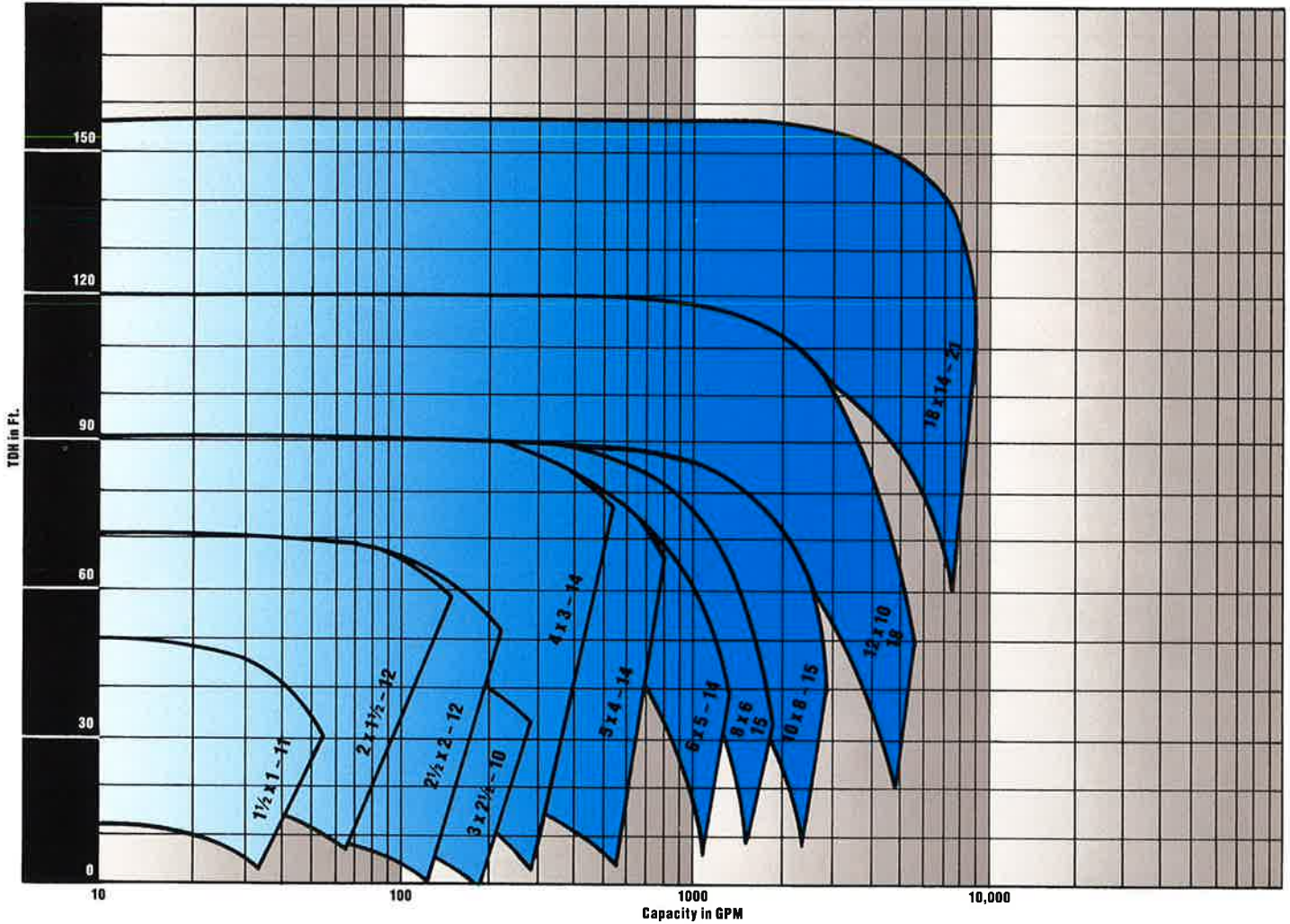
The sub base and frame are heavy cast iron and made to withstand stresses with heavy rib reinforcements. Non-metallic sub bases are available.



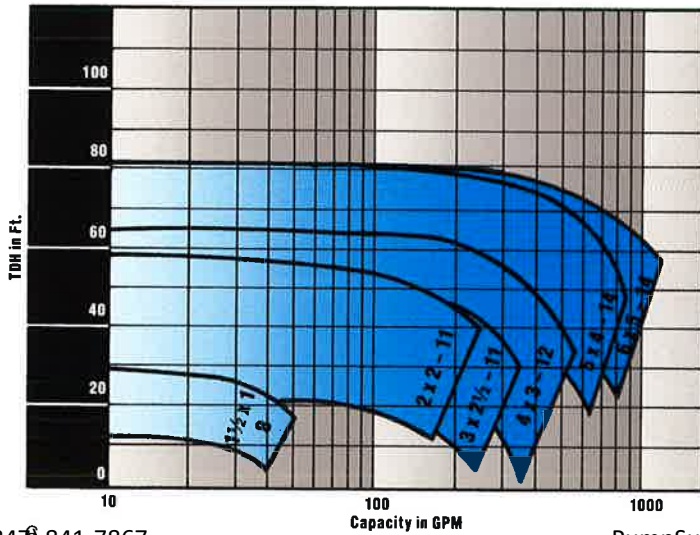


AF Pump Capacities at 1150 RPM

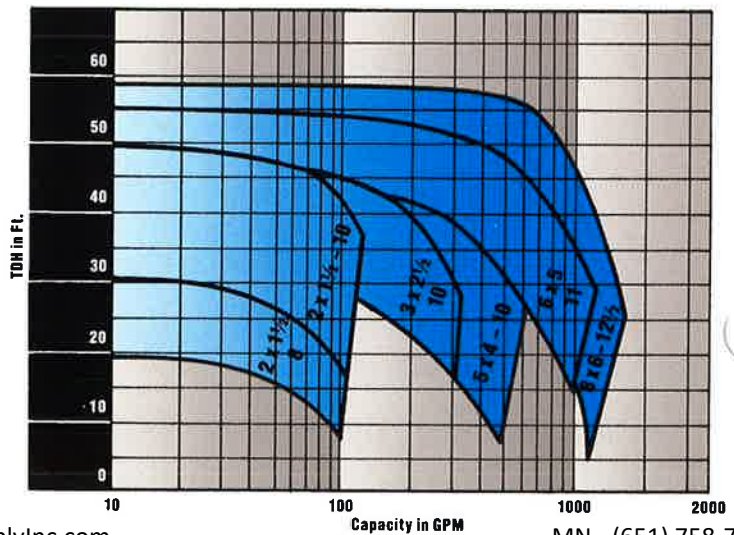
Closed Impeller



Semi-open Impeller



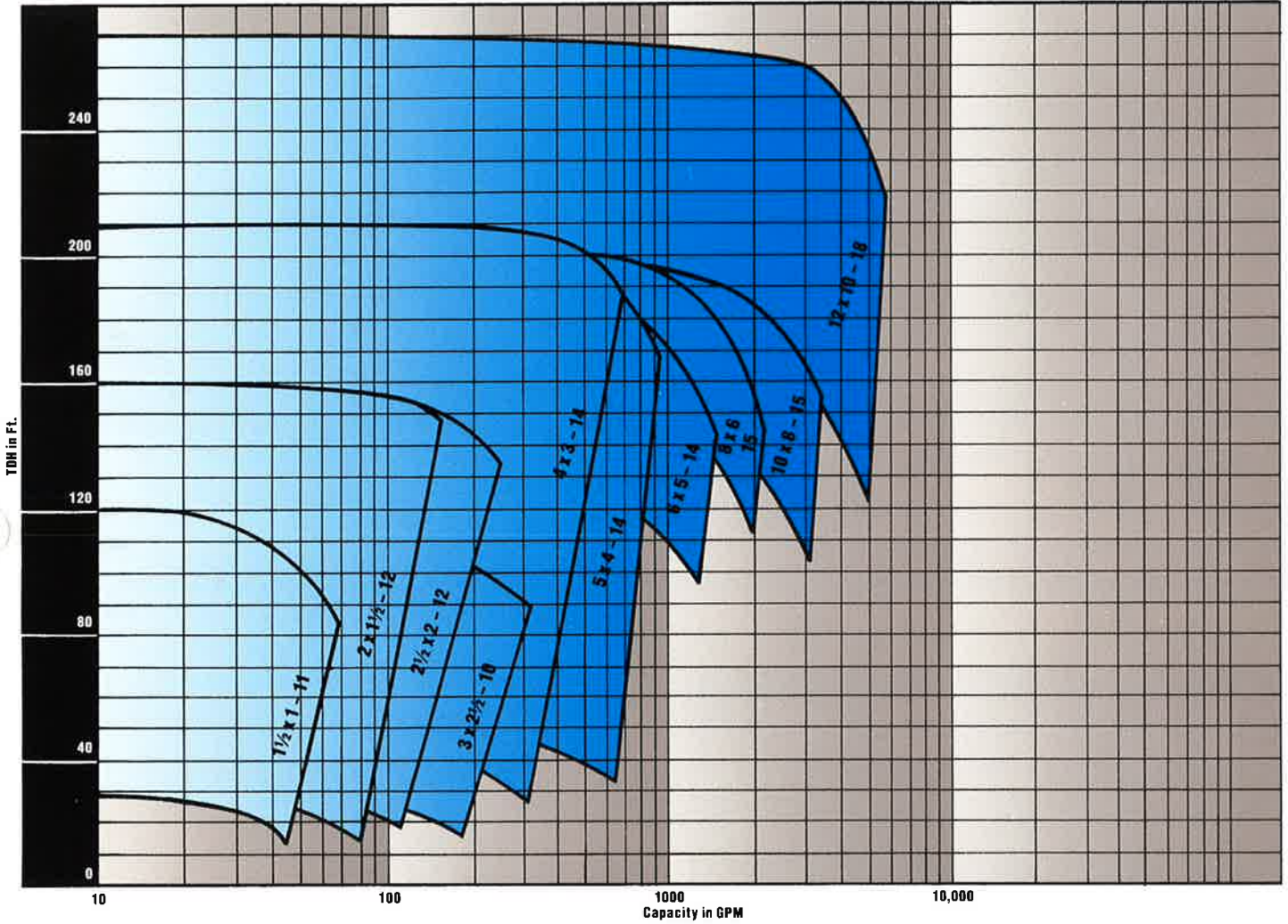
Non-metallic



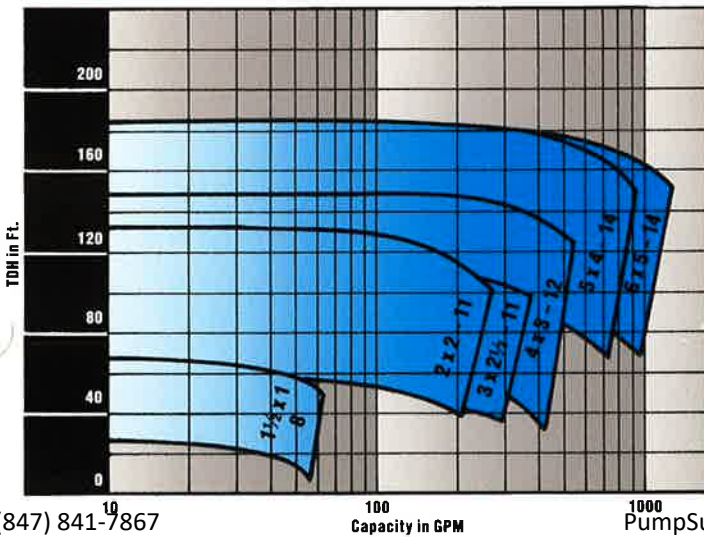


AF Pump Capacities at 1750 RPM

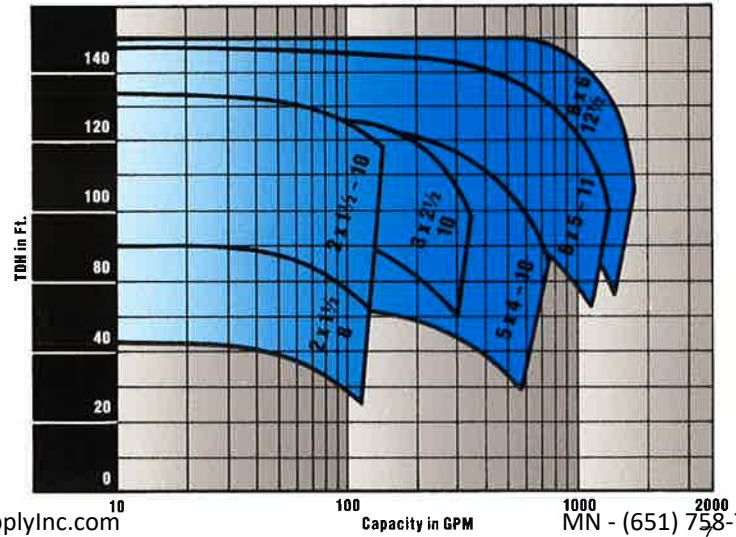
Closed Impeller



Semi-open Impeller



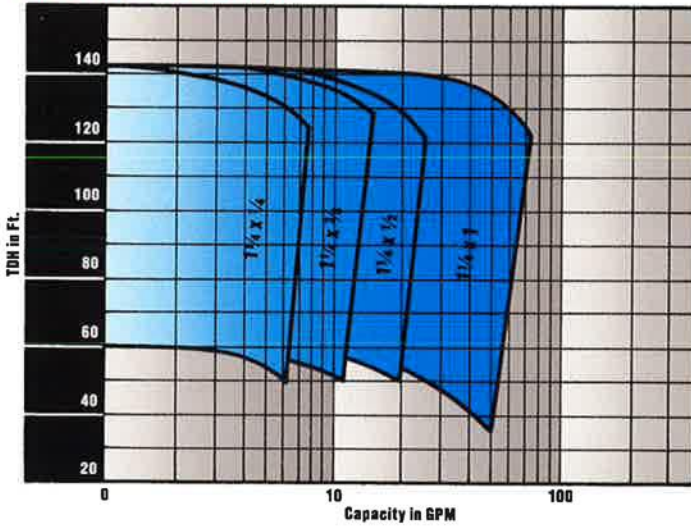
Non-metallic



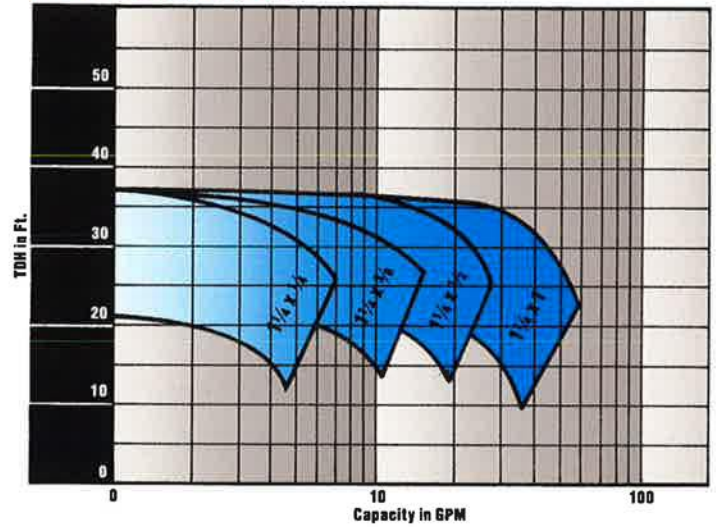


AF Pump Capacities Frame 0

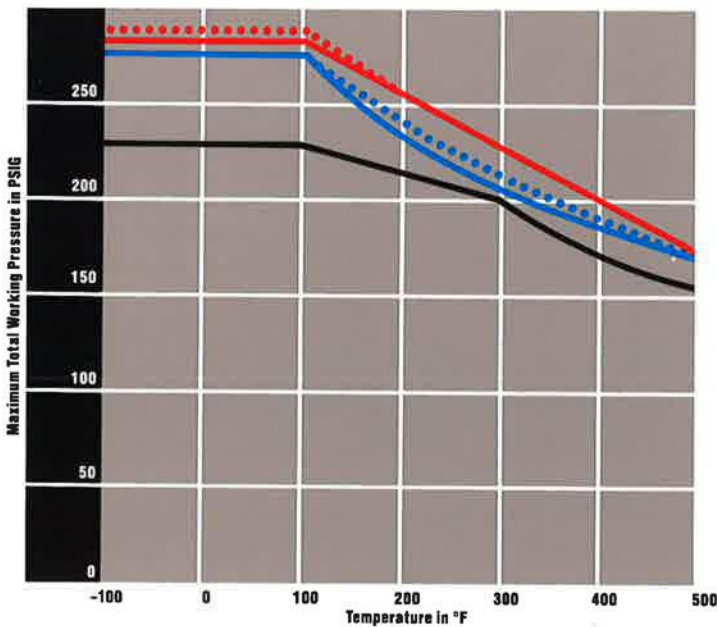
Closed Impeller, 3450 RPM



Closed Impeller, 1750 RPM



Pressure Temperature Ratings



Pressure temperature ratings based on B16.5-1968
Used to show the maximum allowable discharge pressure for pumps with 150LB. flanges

- CD-4MCU
- Steel and Ductile Iron
- 316 S/S
- 304 S/S
- A-20



Illinois Location:

(847) 841-7867
860 Church Rd Elgin, IL 60123

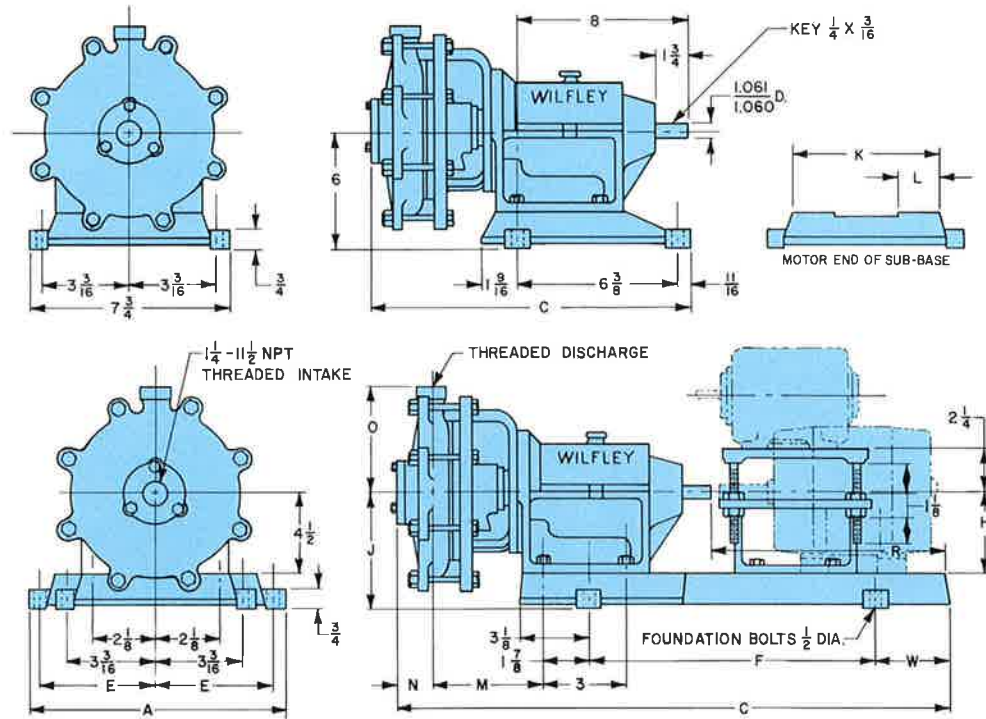
Minnesota Location:

(651) 758-7867
330 Mill Bay South Suite 1511 Afton, MN 55001

PumpSupplyInc.com



Frame 0 Metal Wetted End



| Threaded-Discharge | Side V-Belt Driven Style Pedestal 316-154 Assembly Number | C | Direct Driven Style-Small Sub-Base 318-138 Assembly Number | C | Direct Driven Style-Large Sub-Base 318-240 Assembly Number | C | Overhead V-Belt Driven Style Sub-Base 318-138 Assembly Number | C | A | E | F | H | J | K | L | M | N | O | R | W |
|--------------------|---|----------------------------------|--|----------------------------------|--|----------------------------------|---|----------------------------------|--------------------------------|---------------------------------|--------------------------------|-------------------------------|---|--------------------------------|--------------------------------|---------------------------------|---------------------------------|-------------------------------|--------------------------------|-------------------------------|
| | | | | | | | | | | | | | | | | | | | | |
| 1/4-18 NPT | 318-158 BD | 13 ⁵⁷ / ₆₄ | 318-158 DCS | 26 ⁴⁵ / ₆₄ | | | 318-158 OV | 26 ⁴⁵ / ₆₄ | 11 ³ / ₈ | 5 | 14 ¹ / ₂ | 4 ¹ / ₂ | 6 | 8 ⁷ / ₈ | 3 ³ / ₁₆ | 5 ¹ / ₁₆ | 1 ⁴⁹ / ₆₄ | 5 | 11 ³ / ₄ | 3 ¹ / ₂ |
| 1/4-18 NPT | | | | | 318-158 DCL | 30 ²¹ / ₆₄ | | | 13 | 5 ¹³ / ₁₆ | 17 ¹ / ₄ | 5 ¹ / ₄ | 7 | 10 ¹ / ₂ | 2 | 5 ¹ / ₁₆ | 1 ⁴⁹ / ₆₄ | 5 | 15 ³ / ₈ | 4 ³ / ₈ |
| 3/8-18 NPT | 318-160 BD | 13 ⁵⁷ / ₆₄ | 318-160 DCS | 26 ⁴⁵ / ₆₄ | | | 318-160 OV | 26 ⁴⁵ / ₆₄ | 11 ³ / ₈ | 5 | 14 ¹ / ₂ | 4 ¹ / ₂ | 6 | 8 ⁷ / ₈ | 3 ³ / ₁₆ | 5 ¹ / ₁₆ | 1 ⁴⁹ / ₆₄ | 5 | 11 ³ / ₄ | 3 ¹ / ₂ |
| 3/8-18 NPT | | | | | 318-160 DCL | 30 ²¹ / ₆₄ | | | 13 | 5 ¹³ / ₁₆ | 17 ¹ / ₄ | 5 ¹ / ₄ | 7 | 10 ¹ / ₂ | 2 | 5 ¹ / ₁₆ | 1 ⁴⁹ / ₆₄ | 5 | 15 ³ / ₈ | 4 ³ / ₈ |
| 1/2-14 NPT | 318-162 BD | 13 ⁵⁷ / ₆₄ | 318-162 DCS | 26 ⁴⁵ / ₆₄ | | | 318-162 OV | 26 ⁴⁵ / ₆₄ | 11 ³ / ₈ | 5 | 14 ¹ / ₂ | 4 ¹ / ₂ | 6 | 8 ⁷ / ₈ | 3 ³ / ₁₆ | 5 ¹ / ₁₆ | 1 ⁴⁹ / ₆₄ | 5 | 11 ³ / ₄ | 3 ¹ / ₂ |
| 1/2-14 NPT | | | | | 318-162 DCL | 30 ²¹ / ₆₄ | | | 13 | 5 ¹³ / ₁₆ | 17 ¹ / ₄ | 5 ¹ / ₄ | 7 | 10 ¹ / ₂ | 2 | 5 ¹ / ₁₆ | 1 ⁴⁹ / ₆₄ | 5 | 15 ³ / ₈ | 4 ³ / ₈ |
| 3/4-14 NPT | 318-164 BD | 13 ⁵⁷ / ₆₄ | 318-164 DCS | 26 ⁴⁵ / ₆₄ | | | 318-164 OV | 26 ⁴⁵ / ₆₄ | 11 ³ / ₈ | 5 | 14 ¹ / ₂ | 4 ¹ / ₂ | 6 | 8 ⁷ / ₈ | 3 ³ / ₁₆ | 5 ¹³ / ₆₄ | 1 ⁵ / ₈ | 5 ³ / ₄ | 11 ³ / ₄ | 3 ¹ / ₂ |
| 3/4-14 NPT | | | | | 318-164 DCL | 30 ²¹ / ₆₄ | | | 13 | 5 ¹³ / ₁₆ | 17 ¹ / ₄ | 5 ¹ / ₄ | 7 | 10 ¹ / ₂ | 2 | 5 ¹³ / ₆₄ | 1 ⁵ / ₈ | 5 ³ / ₄ | 15 ³ / ₈ | 4 ³ / ₈ |
| 1-11 1/2 NPT | 318-166 BD | 13 ⁵⁷ / ₆₄ | 318-166 DCS | 26 ⁴⁵ / ₆₄ | | | 318-166 OV | 26 ⁴⁵ / ₆₄ | 11 ³ / ₈ | 5 | 14 ¹ / ₂ | 4 ¹ / ₂ | 6 | 8 ⁷ / ₈ | 3 ³ / ₁₆ | 5 ¹³ / ₆₄ | 1 ⁵ / ₈ | 5 ³ / ₄ | 11 ³ / ₄ | 3 ¹ / ₂ |
| 1-11 1/2 NPT | | | | | 318-166 DCL | 30 ²¹ / ₆₄ | | | 13 | 5 ¹³ / ₁₆ | 17 ¹ / ₄ | 5 ¹ / ₄ | 7 | 10 ¹ / ₂ | 2 | 5 ¹³ / ₆₄ | 1 ⁵ / ₈ | 5 ³ / ₄ | 15 ³ / ₈ | 4 ³ / ₈ |



Illinois Location:

(847) 841-7867

860 Church Rd Elgin, IL 60123

Minnesota Location:

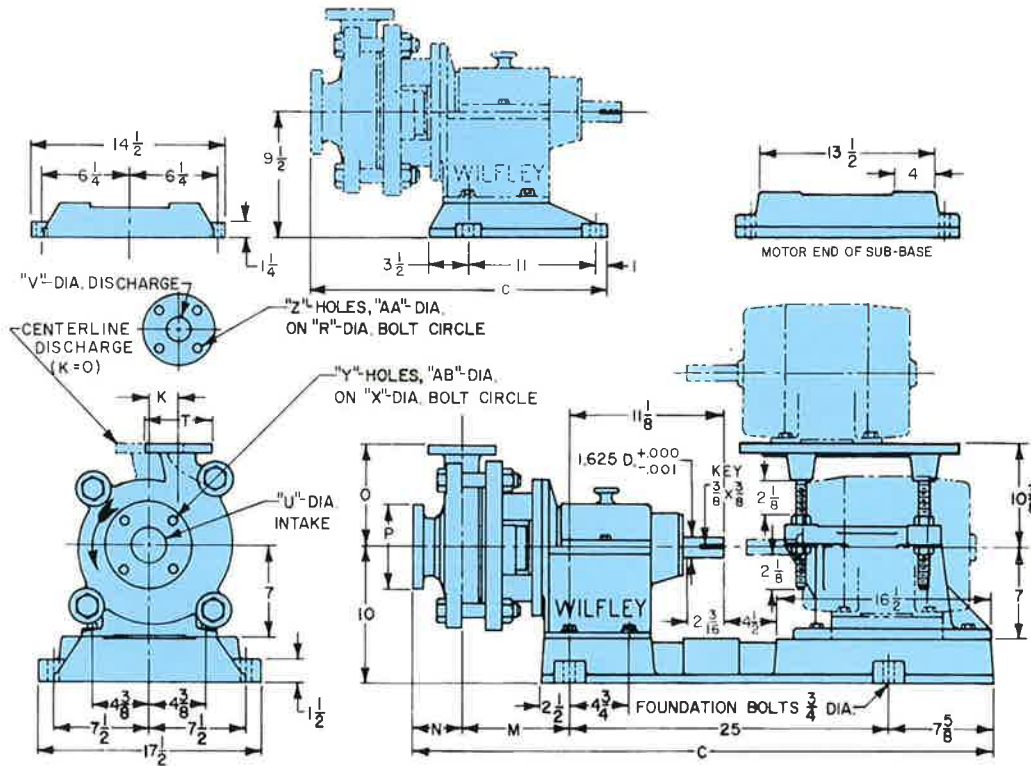
(651) 758-7867

330 Mill Bay South Suite 1511 Afton, MN 55001

PumpSupplyInc.com



Frame 1 Metal Wetted End

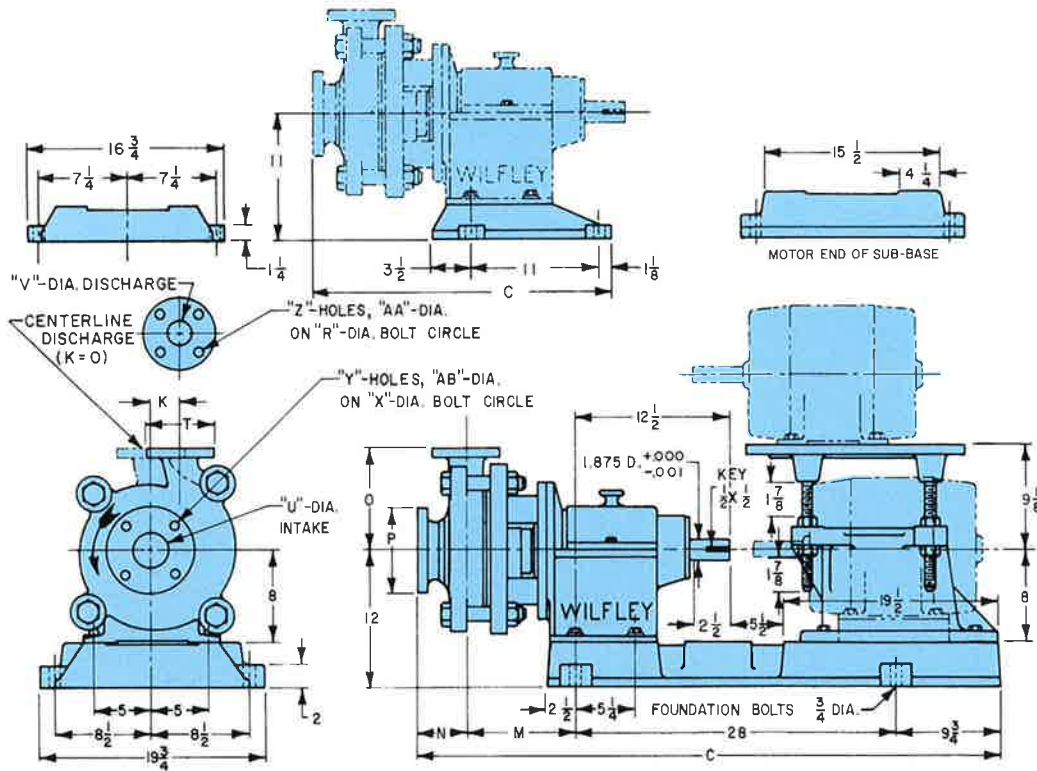


| Impeller Number | Maximum Diameters | Side V-Belt Driven Style | | Direct Driven Style | | Overhead V-Belt Driven Style | | K | M | N | O | P | R | T | U | V | X | Y | Z | AA | AB |
|-----------------|-------------------|--------------------------|----------------------------------|---------------------|----------------------------------|------------------------------|----------------------------------|--------------------------------|---------------------------------|---------------------------------|--------------------------------|-------------------------------|-------------------------------|-------------------------------|-------------------------------|-------------------------------|-------------------------------|---|---|-------------------------------|-------------------------------|
| | | Assembly Number | C | Assembly Number | C | Assembly Number | C | | | | | | | | | | | | | | |
| 225-8 | 8 x 9 | 318-63 BD | 25 ⁹ / ₁₆ | 318-63 DC | 46 ³ / ₈ | 318-63 OV | 46 ³ / ₈ | 5 | 9 | 4 ³ / ₄ | 7 | 6 | 3 ⁷ / ₈ | 5 | 2 | 1 ¹ / ₂ | 4 ³ / ₄ | 4 | 4 | 5 ⁵ / ₈ | 3 ¹ / ₄ |
| 225-37 | 10 x 11 | 318-65 BD | 25 ⁹ / ₁₆ | 318-65 DC | 46 ³ / ₁₆ | 318-65 OV | 46 ³ / ₁₆ | 6 ¹ / ₄ | 9 ³ / ₁₆ | 4 ³ / ₈ | 8 | 6 | 3 ⁷ / ₈ | 5 | 2 | 1 ¹ / ₂ | 4 ³ / ₄ | 4 | 4 | 5 ⁵ / ₈ | 3 ¹ / ₄ |
| 225-43 | 11 x 12 | 318-67 BD | 26 ¹ / ₄ | 318-67 DC | 46 ⁷ / ₈ | 318-67 OV | 46 ⁷ / ₈ | 6 ³ / ₄ | 9 ¹ / ₂ | 4 ³ / ₄ | 9 ¹ / ₂ | 6 | 3 ⁷ / ₈ | 5 | 2 | 1 ¹ / ₂ | 4 ³ / ₄ | 4 | 4 | 5 ⁵ / ₈ | 3 ¹ / ₄ |
| 225-43 | 11 x 12 | 318-104 BD | 26 ⁵ / ₁₆ | 318-104 DC | 46 ¹⁵ / ₁₆ | 318-104 OV | 46 ¹⁵ / ₁₆ | 0 | 9 ⁷ / ₁₆ | 4 ⁷ / ₈ | 11 ¹ / ₂ | 7 | 4 ³ / ₄ | 6 | 2 ¹ / ₂ | 2 | 5 ¹ / ₂ | 4 | 4 | 3 ¹ / ₄ | 3 ¹ / ₄ |
| 225-54 | 7 x 8 | 318-318 BD | 26 ¹ / ₈ | 318-318 DC | 46 ³ / ₄ | 318-318 OV | 46 ³ / ₄ | 5 ³ / ₁₆ | 9 ¹ / ₄ | 4 ⁷ / ₈ | 7 | 7 | 4 ³ / ₄ | 6 | 2 ¹ / ₂ | 2 | 5 ¹ / ₂ | 4 | 4 | 3 ¹ / ₄ | 3 ¹ / ₄ |
| 225-59 | 7 x 8 | 318-69 BD | 25 ³ / ₈ | 318-69 DC | 46 | 318-69 OV | 46 | 5 ¹ / ₂ | 9 ⁷ / ₁₆ | 3 ¹⁵ / ₁₆ | 7 | 7 ¹ / ₂ | 5 ¹ / ₂ | 7 | 3 | 2 ¹ / ₂ | 6 | 4 | 4 | 3 ¹ / ₄ | 3 ¹ / ₄ |
| 225-69 | 10 x 11 | 318-71 BD | 25 ⁵ / ₈ | 318-71 DC | 46 ¹ / ₄ | 318-71 OV | 46 ¹ / ₄ | 6 ³ / ₈ | 9 ¹ / ₈ | 4 ¹ / ₂ | 7 ⁷ / ₈ | 6 | 4 ³ / ₄ | 6 | 2 | 2 | 4 ³ / ₄ | 4 | 4 | 3 ¹ / ₄ | 3 ¹ / ₄ |
| 225-76 | 9 x 10 | 318-73 BD | 25 ¹⁵ / ₁₆ | 318-73 DC | 46 ⁹ / ₁₆ | 318-73 OV | 46 ⁹ / ₁₆ | 5 ³ / ₄ | 9 ⁷ / ₁₆ | 4 ¹ / ₂ | 8 | 7 | 4 ³ / ₄ | 6 | 2 ¹ / ₂ | 2 | 5 ¹ / ₂ | 4 | 4 | 3 ¹ / ₄ | 3 ¹ / ₄ |
| 225-88 | 9 x 10 | 318-75 BD | 25 ⁹ / ₁₆ | 318-75 DC | 46 ³ / ₁₆ | 318-75 OV | 46 ³ / ₁₆ | 5 ¹ / ₄ | 8 ¹³ / ₁₆ | 4 ³ / ₄ | 8 | 5 | 3 ¹ / ₈ | 4 ¹ / ₄ | 1 ¹ / ₂ | 1 | 3 ⁷ / ₈ | 4 | 4 | 5 ⁵ / ₈ | 5 ⁵ / ₈ |
| 225-133 | 7 x 8 | 318-79 BD | 25 ¹ / ₄ | 318-79 DC | 45 ⁷ / ₈ | 318-79 OV | 45 ⁷ / ₈ | 4 ³ / ₈ | 8 ¹ / ₁₆ | 4 ⁹ / ₁₆ | 6 ⁵ / ₈ | 5 | 3 ¹ / ₈ | 4 ¹ / ₄ | 1 ¹ / ₂ | 1 | 3 ⁷ / ₈ | 4 | 4 | 5 ⁵ / ₈ | 5 ⁵ / ₈ |
| 225-286 | 10 x 11 | 318-83 BD | 25 ⁷ / ₈ | 318-83 DC | 46 ¹ / ₂ | 318-83 OV | 46 ¹ / ₂ | 6 ¹ / ₄ | 9 ⁵ / ₁₆ | 4 ⁹ / ₁₆ | 9 | 7 | 4 ³ / ₄ | 6 | 2 ¹ / ₂ | 2 | 5 ¹ / ₂ | 4 | 4 | 3 ¹ / ₄ | 3 ¹ / ₄ |
| 225-350 | 10 x 11 | 318-371 BD | 25 ³ / ₈ | 318-371 DC | 46 | 318-371 OV | 46 | 6 ⁵ / ₈ | 9 ¹ / ₄ | 4 ¹ / ₈ | 9 | 7 ¹ / ₂ | 5 ¹ / ₂ | 7 | 3 | 2 ¹ / ₂ | 6 | 4 | 4 | 3 ¹ / ₄ | 3 ¹ / ₄ |
| 225-356 | 9 x 10 | 318-85 BD | 25 ³ / ₈ | 318-85 DC | 46 | 318-85 OV | 46 | 6 ¹ / ₈ | 9 ¹ / ₄ | 4 ¹ / ₈ | 8 ¹ / ₂ | 7 ¹ / ₂ | 5 ¹ / ₂ | 7 | 3 | 2 ¹ / ₂ | 6 | 4 | 4 | 3 ¹ / ₄ | 3 ¹ / ₄ |
| 225-393 | 12 x 13 | 318-87 BD | 26 ¹ / ₄ | 318-87 DC | 46 ⁷ / ₈ | 318-87 OV | 46 ⁷ / ₈ | 6 ³ / ₄ | 9 ¹ / ₂ | 4 ³ / ₄ | 10 | 6 | 3 ⁷ / ₈ | 5 | 2 | 1 ¹ / ₂ | 4 ³ / ₄ | 4 | 4 | 5 ⁵ / ₈ | 3 ¹ / ₄ |
| 225-393 | 12 x 13 | 318-358 BD | 26 ¹ / ₄ | 318-358 DC | 46 ⁷ / ₈ | 318-358 OV | 46 ⁷ / ₈ | 7 | 9 ³ / ₈ | 4 ⁷ / ₈ | 10 | 7 | 4 ³ / ₄ | 6 | 2 ¹ / ₂ | 2 | 5 ¹ / ₂ | 4 | 4 | 3 ¹ / ₄ | 3 ¹ / ₄ |
| 225-629 | 8 x 9 | 318-326 BD | 25 ⁵ / ₈ | 318-326 DC | 46 ¹ / ₄ | 318-326 OV | 46 ¹ / ₄ | 0 | 8 ⁷ / ₈ | 4 ³ / ₄ | 8 | 5 | 3 ¹ / ₈ | 4 ¹ / ₄ | 1 ¹ / ₂ | 1 | 3 ⁷ / ₈ | 4 | 4 | 5 ⁵ / ₈ | 5 ⁵ / ₈ |
| 225-937 | 11 x 12 | 318-528 BD | 26 ¹ / ₄ | 318-528 DC | 46 ⁷ / ₈ | 318-528 OV | 46 ⁷ / ₈ | 3 ³ / ₄ | 9 ¹ / ₂ | 4 ³ / ₄ | 9 ¹ / ₂ | 6 | 4 ³ / ₄ | 6 | 2 | 2 | 4 ³ / ₄ | 4 | 4 | 3 ¹ / ₄ | 3 ¹ / ₄ |
| 225-937 | 11 x 12 | 318-545 BD | 26 ¹ / ₄ | 318-545 DC | 46 ⁷ / ₈ | 318-545 OV | 46 ⁷ / ₈ | 0 | 9 ¹ / ₄ | 5 | 10 ⁵ / ₈ | 7 ¹ / ₂ | 5 ¹ / ₂ | 7 | 3 | 2 ¹ / ₂ | 6 | 4 | 4 | 3 ¹ / ₄ | 3 ¹ / ₄ |
| 225-962 | 8 x 9 | 318-501 BD | 23 ¹³ / ₁₆ | 318-501 DC | 44 ⁷ / ₁₆ | 318-501 OV | 44 ⁷ / ₁₆ | 0 | 8 ⁵ / ₈ | 3 ³ / ₁₆ | 7 ⁵ / ₈ | 5 | 3 ¹ / ₈ | 4 ¹ / ₄ | 1 ¹ / ₂ | 1 | 3 ⁷ / ₈ | 4 | 4 | 5 ⁵ / ₈ | 5 ⁵ / ₈ |
| 228-1153 | 11 x 12 | 318-599 BD | 26 | 318-599 DC | 46 ³ / ₈ | 318-599 OV | 46 ³ / ₈ | 0 | 9 ¹ / ₂ | 4 ¹ / ₂ | 10 ³ / ₄ | 5 | 3 ¹ / ₈ | 4 ¹ / ₄ | 1 ¹ / ₂ | 1 | 3 ⁷ / ₈ | 4 | 4 | 5 ⁵ / ₈ | 5 ⁵ / ₈ |

All Dimensions Are in Inches
 All Flanges Are 125 Lb. American Standard Cast Iron (Same as 150 Lb. American Standard Steel)



Frame 2 Metal Wetted End

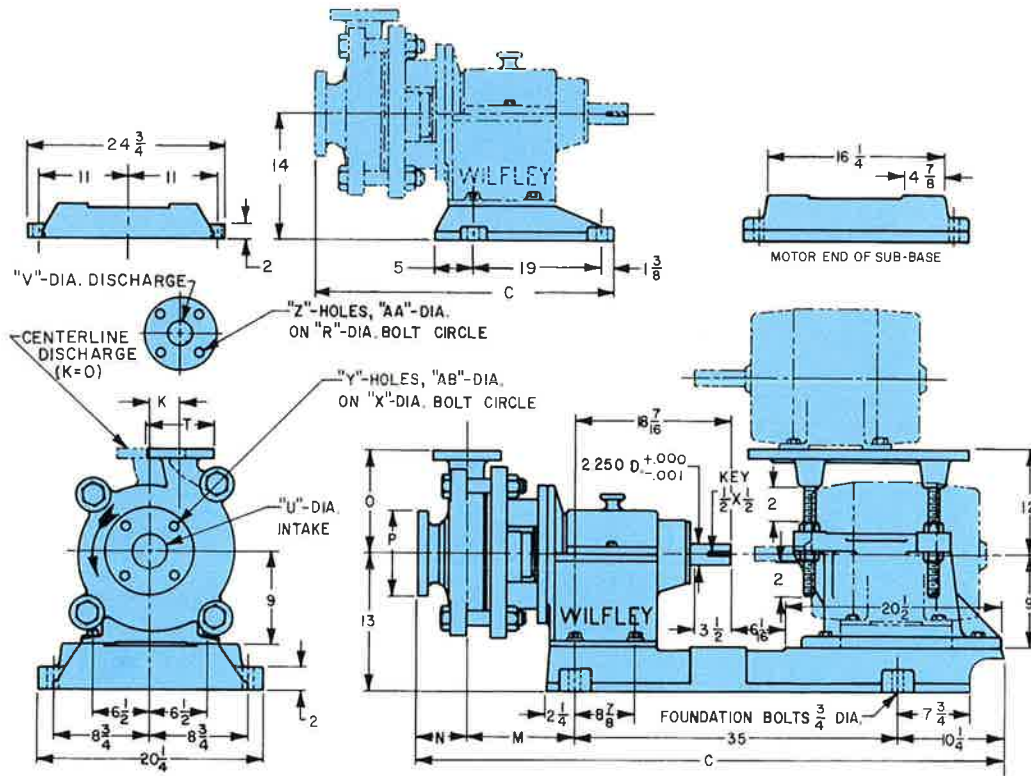


| Impeller Number | Maximum Diameters | Side V-Belt Driven Style Assembly Number | C | Direct Driven Style Assembly Number | C | Overhead V-Belt Driven Style Assembly Number | C | K | M | N | O | P | R | T | U | V | X | Y | Z | AA | BB |
|-----------------|------------------------------------|--|---------------------------------|-------------------------------------|----------------------------------|--|----------------------------------|--------------------------------|--------------------------------|--------------------------------|--------------------------------|-------------------------------|-------------------------------|-------------------------------|-------------------------------|--------------------------------|-------------------------------|---|---|-------------------------------|-------------------------------|
| | | | | | | | | | | | | | | | | | | | | | |
| 225-8 | 8 x 9 | 318-89 BD | 26 ¹ / ₈ | 318-89 DC | 51 ³ / ₄ | 318-89 OV | 51 ³ / ₄ | 5 | 9 ¹ / ₄ | 4 ³ / ₄ | 7 | 6 | 3 ⁷ / ₈ | 5 | 2 | 1 ¹ / ₂ | 4 ³ / ₄ | 4 | 4 | 5 ⁵ / ₈ | 3 ¹ / ₄ |
| 225-37 | 10 x 11 | 318-91 BD | 25 ⁵ / ₁₆ | 318-91 DC | 51 ⁹ / ₁₆ | 318-91 OV | 51 ⁹ / ₁₆ | 6 ¹ / ₄ | 9 ⁷ / ₁₆ | 4 ³ / ₈ | 8 | 6 | 3 ⁷ / ₈ | 5 | 2 | 1 ¹ / ₂ | 4 ³ / ₄ | 4 | 4 | 5 ⁵ / ₈ | 3 ¹ / ₄ |
| 225-43 | 11 x 12 | 318-93 BD | 26 ⁵ / ₈ | 318-93 DC | 52 ¹ / ₄ | 318-93 OV | 52 ¹ / ₄ | 6 ³ / ₄ | 9 ³ / ₄ | 4 ³ / ₄ | 9 ¹ / ₂ | 6 | 3 ⁷ / ₈ | 5 | 2 | 1 ¹ / ₂ | 4 ³ / ₄ | 4 | 4 | 5 ⁵ / ₈ | 3 ¹ / ₄ |
| 225-43 | 11 x 12 | 318-92 BD | 26 ¹ / ₁₆ | 318-92 DC | 52 ⁵ / ₁₆ | 318-92 OV | 52 ⁵ / ₁₆ | 0 | 9 ¹ / ₁₆ | 4 ⁷ / ₈ | 11 ¹ / ₂ | 7 | 4 ³ / ₄ | 6 | 2 ¹ / ₂ | 2 | 5 ¹ / ₂ | 4 | 4 | 3 ¹ / ₄ | 3 ¹ / ₄ |
| 225-54 | 7 x 8 | 318-303 BD | 26 ¹ / ₂ | 318-303 DC | 52 ¹ / ₈ | 318-303 OV | 52 ¹ / ₈ | 5 ³ / ₁₆ | 9 ¹ / ₂ | 4 ⁷ / ₈ | 7 | 7 | 4 ³ / ₄ | 6 | 2 ¹ / ₂ | 2 | 5 ¹ / ₂ | 4 | 4 | 3 ¹ / ₄ | 3 ¹ / ₄ |
| 225-59 | 7 x 8 | 318-95 BD | 25 ³ / ₄ | 318-95 DC | 51 ³ / ₈ | 318-95 OV | 51 ³ / ₈ | 5 ¹ / ₂ | 9 ¹ / ₁₆ | 3 ¹ / ₁₆ | 7 | 7 ¹ / ₂ | 5 ¹ / ₂ | 7 | 3 | 2 ¹ / ₂ | 6 | 4 | 4 | 3 ¹ / ₄ | 3 ¹ / ₄ |
| 225-69 | 10 x 11 | 318-97 BD | 26 | 318-97 DC | 51 ⁵ / ₈ | 318-97 OV | 51 ⁵ / ₈ | 6 ⁵ / ₈ | 9 ³ / ₈ | 4 ¹ / ₂ | 7 ⁷ / ₈ | 6 | 4 ³ / ₄ | 6 | 2 | 2 | 4 ³ / ₄ | 4 | 4 | 3 ¹ / ₄ | 3 ¹ / ₄ |
| 225-76 | 9 x 10 | 318-99 BD | 26 ⁵ / ₁₆ | 318-99 DC | 51 ⁵ / ₁₆ | 318-99 OV | 51 ⁵ / ₁₆ | 5 ³ / ₄ | 9 ¹ / ₁₆ | 4 ¹ / ₂ | 8 | 7 | 4 ³ / ₄ | 6 | 2 ¹ / ₂ | 2 | 5 ¹ / ₂ | 4 | 4 | 3 ¹ / ₄ | 3 ¹ / ₄ |
| 225-88 | 9 x 10 | 318-101 BD | 25 ⁵ / ₁₆ | 318-101 DC | 51 ⁹ / ₁₆ | 318-101 OV | 51 ⁹ / ₁₆ | 5 ¹ / ₄ | 9 ¹ / ₁₆ | 4 ³ / ₄ | 8 | 5 | 3 ¹ / ₈ | 4 ¹ / ₄ | 1 ¹ / ₂ | 1 | 3 ⁷ / ₈ | 4 | 4 | 5 ⁵ / ₈ | 5 ⁵ / ₈ |
| 225-133 | 7 x 8 | 318-105 BD | 25 ⁵ / ₈ | 318-105 DC | 51 ¹ / ₄ | 318-105 OV | 51 ¹ / ₄ | 4 ³ / ₈ | 8 ¹ / ₁₆ | 4 ³ / ₁₆ | 6 ⁵ / ₈ | 5 | 3 ¹ / ₈ | 4 ¹ / ₄ | 1 ¹ / ₂ | 1 | 3 ⁷ / ₈ | 4 | 4 | 5 ⁵ / ₈ | 5 ⁵ / ₈ |
| 225-188 | 7 x 8 | 318-376 BD | 25 ³ / ₈ | 318-376 DC | 51 | 318-376 OV | 51 | 4 ⁷ / ₈ | 9 ¹ / ₄ | 4 | 7 ³ / ₄ | 7 ¹ / ₂ | 4 ³ / ₄ | 6 | 3 | 2 | 6 | 4 | 4 | 3 ¹ / ₄ | 3 ¹ / ₄ |
| 225-286 | 10 x 11 | 318-109 BD | 26 ¹ / ₄ | 318-109 DC | 51 ⁷ / ₈ | 318-109 OV | 51 ⁷ / ₈ | 6 ¹ / ₄ | 9 ⁹ / ₁₆ | 4 ³ / ₁₆ | 9 | 7 | 4 ³ / ₄ | 6 | 2 ¹ / ₂ | 2 | 5 ¹ / ₂ | 4 | 4 | 3 ¹ / ₄ | 3 ¹ / ₄ |
| 225-350 | 10 x 11 | 318-234 BD | 25 ³ / ₄ | 318-234 DC | 51 ³ / ₈ | 318-234 OV | 51 ³ / ₈ | 6 ⁵ / ₈ | 9 ¹ / ₂ | 4 ¹ / ₈ | 9 | 7 ¹ / ₂ | 5 ¹ / ₂ | 7 | 3 | 2 ¹ / ₂ | 6 | 4 | 4 | 3 ¹ / ₄ | 3 ¹ / ₄ |
| 225-356 | 9 x 10 | 318-111 BD | 25 ³ / ₄ | 318-111 DC | 51 ³ / ₈ | 318-111 OV | 51 ³ / ₈ | 6 ¹ / ₈ | 9 ¹ / ₂ | 4 ¹ / ₈ | 8 ¹ / ₂ | 7 ¹ / ₂ | 5 ¹ / ₂ | 7 | 3 | 2 ¹ / ₂ | 6 | 4 | 4 | 3 ¹ / ₄ | 3 ¹ / ₄ |
| 225-393 | 12 x 13 | 318-113 BD | 26 ⁵ / ₈ | 318-113 DC | 52 ¹ / ₄ | 318-113 OV | 52 ¹ / ₄ | 6 ³ / ₄ | 9 ³ / ₄ | 4 ³ / ₄ | 10 | 6 | 3 ⁷ / ₈ | 5 | 2 | 1 ¹ / ₂ | 4 ³ / ₄ | 4 | 4 | 5 ⁵ / ₈ | 3 ¹ / ₄ |
| 225-393 | 12 x 13 | 318-357 BD | 26 ⁵ / ₈ | 318-357 DC | 52 ¹ / ₄ | 318-357 OV | 52 ¹ / ₄ | 7 | 9 ⁵ / ₈ | 4 ⁷ / ₈ | 10 | 7 | 4 ³ / ₄ | 6 | 2 ¹ / ₂ | 2 | 5 ¹ / ₂ | 4 | 4 | 3 ¹ / ₄ | 3 ¹ / ₄ |
| 225-580 | 7 x 8 | 318-269 BD | 25 ⁵ / ₁₆ | 318-269 DC | 50 ⁵ / ₁₆ | 318-269 OV | 50 ⁵ / ₁₆ | 4 ⁷ / ₈ | 9 ³ / ₁₆ | 4 | 6 ¹ / ₂ | 7 | 3 ⁷ / ₈ | 5 | 2 | 1 ¹ / ₂ | 5 ¹ / ₂ | 4 | 4 | 5 ⁵ / ₈ | 3 ¹ / ₄ |
| 225-629 | 8 x 9 | 318-366 BD | 26 | 318-366 DC | 51 ⁵ / ₈ | 318-366 OV | 51 ⁵ / ₈ | 0 | 9 ¹ / ₈ | 4 ³ / ₄ | 8 | 5 | 3 ¹ / ₈ | 4 ¹ / ₄ | 1 ¹ / ₂ | 1 | 3 ⁷ / ₈ | 4 | 4 | 5 ⁵ / ₈ | 5 ⁵ / ₈ |
| 225-934 | 9 ¹ / ₂ x 10 | 318-486 BD | 26 ¹ / ₁₆ | 318-486 DC | 51 ¹¹ / ₁₆ | 318-486 OV | 51 ¹¹ / ₁₆ | 2 ¹ / ₂ | 9 ⁵ / ₈ | 4 ⁵ / ₁₆ | 9 | 7 ¹ / ₂ | 4 ³ / ₄ | 6 | 3 | 2 | 6 | 4 | 4 | 3 ¹ / ₄ | 3 ¹ / ₄ |
| 225-937 | 11 x 12 | 318-487 BD | 26 ⁵ / ₈ | 318-487 DC | 52 ¹ / ₄ | 318-487 OV | 52 ¹ / ₄ | 3 ³ / ₄ | 9 ³ / ₄ | 4 ³ / ₄ | 9 ¹ / ₂ | 6 | 4 ³ / ₄ | 6 | 2 | 2 | 4 ³ / ₄ | 4 | 4 | 3 ¹ / ₄ | 3 ¹ / ₄ |
| 225-937 | 11 x 12 | 318-527 BD | 26 ⁵ / ₈ | 318-527 DC | 52 ¹ / ₄ | 318-527 OV | 52 ¹ / ₄ | 0 | 9 ¹ / ₂ | 5 | 10 ⁵ / ₈ | 7 ¹ / ₂ | 5 ¹ / ₂ | 7 | 3 | 2 ¹ / ₂ | 6 | 4 | 4 | 3 ¹ / ₄ | 3 ¹ / ₄ |
| 225-962 | 8 x 9 | 318-546 BD | 24 ³ / ₁₆ | 318-546 DC | 49 ³ / ₁₆ | 318-546 OV | 49 ³ / ₁₆ | 0 | 8 ⁷ / ₈ | 3 ³ / ₁₆ | 7 ⁷ / ₈ | 5 | 3 ¹ / ₈ | 4 ¹ / ₄ | 1 ⁵ / ₈ | 1 ¹ / ₁₆ | 3 ⁷ / ₈ | 4 | 4 | 5 ⁵ / ₈ | 5 ⁵ / ₈ |
| 228-1153 | 11 x 12 | 318-598 BD | 26 ³ / ₈ | 318-598 DC | 52 | 318-598 OV | 52 | 0 | 9 ³ / ₄ | 4 ¹ / ₂ | 10 ³ / ₄ | 5 | 3 ¹ / ₈ | 4 ¹ / ₄ | 1 ¹ / ₂ | 1 | 3 ⁷ / ₈ | 4 | 4 | 5 ⁵ / ₈ | 5 ⁵ / ₈ |

All Dimensions Are in Inches
 All Flanges Are 125 Lb. American Standard Cast Iron (Same as 150 Lb. American Standard Steel)



Frame 3 Metal Wetted End



| Impeller Number | Maximum Diameters | Side V-Belt Driven Style Assembly Number | | Direct Driven Style Assembly Number | | Overhead V-Belt Driven Style Assembly Number | | K | M | N | O | P | R | T | U | V | X | Y | Z | AA | AB |
|-----------------|-------------------|--|----------|-------------------------------------|----------|--|----------|-------|---------|---------|--------|----|-------|-------|---|---|-------|---|---|-----|-----|
| | | C | | C | | C | | | | | | | | | | | | | | | |
| 226-51 | 14 x 15 | 318-313 BD | 36 1/16 | 318-313 DC | 61 9/16 | 318-313 OV | 61 9/16 | 9 3/4 | 11 3/16 | 5 1/8 | 12 1/2 | 11 | 8 1/2 | 10 | 6 | 5 | 9 1/2 | 8 | 8 | 7/8 | 7/8 |
| 226-72 | 12 x 13 | 318-388 BD | 35 3/8 | 318-388 DC | 60 1/4 | 318-388 OV | 60 1/4 | 0 | 10 | 5 | 12 1/2 | 9 | 6 | 7 1/2 | 4 | 3 | 7 1/2 | 8 | 4 | 3/4 | 3/4 |
| 225-161 | 8 x 9 | 318-115 BD | 35 1/2 | 318-115 DC | 60 3/8 | 318-115 OV | 60 3/8 | 6 | 10 7/16 | 4 1/16 | 8 1/2 | 9 | 6 | 7 1/2 | 4 | 3 | 7 1/2 | 8 | 4 | 3/4 | 3/4 |
| 225-209 | 14 x 15 | 318-333 BD | 35 15/16 | 318-333 DC | 60 13/16 | 318-333 OV | 60 13/16 | 3 1/2 | 10 3/4 | 4 13/16 | 13 | 9 | 6 | 7 1/2 | 4 | 3 | 7 1/2 | 8 | 4 | 3/4 | 3/4 |
| 226-248 | 12 x 15 | 318-245 BD | 35 7/16 | 318-245 DC | 60 5/16 | 318-245 OV | 60 5/16 | 2 1/2 | 10 3/4 | 4 5/16 | 15 | 10 | 7 1/2 | 9 | 5 | 4 | 8 1/2 | 8 | 8 | 3/4 | 7/8 |
| 225-258 | 9 x 10 | 318-119 BD | 34 7/8 | 318-119 DC | 59 3/4 | 318-119 OV | 59 3/4 | 6 1/2 | 10 | 4 1/2 | 9 1/2 | 9 | 6 | 7 1/2 | 4 | 3 | 7 1/2 | 8 | 4 | 3/4 | 3/4 |
| 225-339 | 10 x 11 | 318-129 BD | 35 | 318-129 DC | 59 7/8 | 318-129 OV | 59 7/8 | 7 | 10 1/4 | 4 3/8 | 9 1/2 | 9 | 6 | 7 1/2 | 4 | 3 | 7 1/2 | 8 | 4 | 3/4 | 3/4 |
| 225-377 | 11 x 12 | 318-125 BD | 35 3/4 | 318-125 DC | 60 5/8 | 318-125 OV | 60 5/8 | 8 | 10 9/16 | 4 13/16 | 9 1/2 | 10 | 7 1/2 | 9 | 5 | 4 | 8 1/2 | 8 | 8 | 3/4 | 7/8 |
| 225-543 | 14 x 15 | 318-238 BD | 36 7/8 | 318-238 DC | 61 3/4 | 318-238 OV | 61 3/4 | 9 3/4 | 11 1/4 | 5 1/4 | 12 1/2 | 11 | 8 1/2 | 10 | 6 | 5 | 9 1/2 | 8 | 8 | 7/8 | 7/8 |
| 225-588 | 11 x 12 | 318-416 BD | 35 3/8 | 318-416 DC | 60 1/4 | 318-416 OV | 60 1/4 | 7 1/2 | 10 5/16 | 4 1/16 | 10 1/4 | 9 | 6 | 7 1/2 | 4 | 3 | 7 1/2 | 8 | 8 | 3/4 | 3/4 |
| 225-596 | 12 x 13 | 318-290 BD | 35 3/8 | 318-290 DC | 60 1/4 | 318-290 OV | 60 1/4 | 0 | 10 | 5 | 12 1/2 | 9 | 6 | 7 1/2 | 4 | 3 | 7 1/2 | 8 | 4 | 3/4 | 3/4 |
| 225-643A | 12 x 13 | 318-311 BD | 35 3/4 | 318-311 DC | 60 5/8 | 318-311 OV | 60 5/8 | 0 | 10 3/4 | 4 5/8 | 14 | 10 | 7 1/2 | 9 | 5 | 4 | 8 1/2 | 8 | 8 | 3/4 | 7/8 |
| 225-983 | 8 x 9 | 318-541 BD | 35 1/2 | 318-541 DC | 60 3/8 | 318-541 OV | 60 3/8 | 6 | 10 7/16 | 4 1/16 | 8 1/2 | 9 | 6 | 7 1/2 | 4 | 3 | 7 1/2 | 8 | 4 | 3/4 | 3/4 |
| 225-992 | 14 x 15 | 318-536 BD | 36 | 318-536 DC | 60 7/8 | 318-536 OV | 60 7/8 | 2 1/2 | 10 3/4 | 4 7/8 | 15 | 10 | 7 1/2 | 9 | 5 | 4 | 8 1/2 | 8 | 8 | 3/4 | 7/8 |
| 225-996 | 9 x 10 | 318-538 BD | 35 5/8 | 318-538 DC | 60 1/2 | 318-538 OV | 60 1/2 | 7 1/8 | 10 5/8 | 4 5/8 | 9 1/2 | 10 | 7 1/2 | 9 | 5 | 4 | 8 1/2 | 8 | 8 | 3/4 | 7/8 |

Illinois Location:

(847) 841-7867

860 Church Rd Elgin, IL 60123

Minnesota Location:

(651) 758-7867

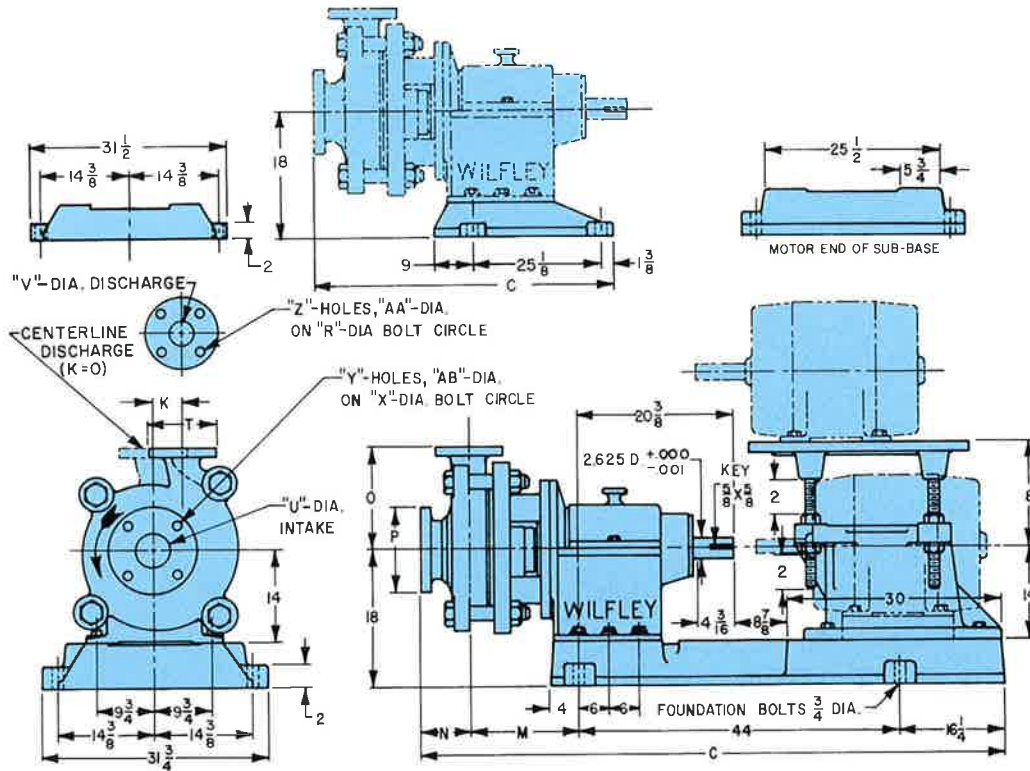
330 Mill Bay South Suite 1511 Afton, MN 55001

All Dimensions Are in Inches
All Flanges Are 125 Lb. American Standard Cast Iron (Same as 150 Lb. American Standard Steel)

PumpSupplyInc.com



Frame 4 Metal Wetted End



| Impeller Number | Maximum Diameters | Side V-Belt Driven Style | | Direct Driven Style | | Overhead V-Belt Driven Style | | K | M | N | O | P | R | T | U | V | X | Y | Z | AA | AB |
|-----------------|-------------------------------------|--------------------------|----------------------------------|---------------------|----------------------------------|------------------------------|----------------------------------|--------------------------------|----------------------------------|---------------------------------|--------------------------------|--------------------------------|--------------------------------|--------------------------------|----|---|--------------------------------|----|---|-------------------------------|-------------------------------|
| | | Assembly Number | C | Assembly Number | C | Assembly Number | C | | | | | | | | | | | | | | |
| 226-51 | 14 x 15 | 318-312 BD | 44 ⁵ / ₁₆ | 318-312 DC | 78 ¹ / ₁₆ | 318-312 OV | 78 ¹ / ₁₆ | 9 ³ / ₄ | 12 ¹¹ / ₁₆ | 5 ¹ / ₈ | 12 ¹ / ₂ | 11 | 8 ¹ / ₂ | 10 | 6 | 5 | 9 ¹ / ₂ | 8 | 8 | 7 ¹ / ₈ | 7 ¹ / ₈ |
| 225-209 | 14 ¹ / ₂ x 15 | 318-351 BD | 43 ⁹ / ₁₆ | 318-351 DC | 77 ⁵ / ₁₆ | 318-351 OV | 77 ⁵ / ₁₆ | 3 ¹ / ₂ | 12 ¹ / ₄ | 4 ¹³ / ₁₆ | 13 | 9 | 6 | 7 ¹ / ₂ | 4 | 3 | 7 ¹ / ₂ | 8 | 4 | 3 ¹ / ₄ | 3 ¹ / ₄ |
| 226-248 | 13 x 15 | 318-266 BD | 43 ¹ / ₁₆ | 318-266 DC | 76 ¹³ / ₁₆ | 318-266 OV | 76 ¹³ / ₁₆ | 2 ¹ / ₂ | 12 ¹ / ₄ | 4 ⁹ / ₁₆ | 15 | 10 | 7 ¹ / ₂ | 9 | 5 | 4 | 8 ¹ / ₂ | 8 | 8 | 9 ³ / ₄ | 7 ¹ / ₈ |
| 225-377 | 11 x 12 | 318-280 BD | 43 ⁹ / ₁₆ | 318-280 DC | 77 ¹ / ₈ | 318-280 OV | 77 ¹ / ₈ | 8 | 12 ¹ / ₁₆ | 4 ¹³ / ₁₆ | 9 ¹ / ₂ | 10 | 7 ¹ / ₂ | 9 | 5 | 4 | 8 ¹ / ₂ | 8 | 8 | 9 ³ / ₄ | 7 ¹ / ₈ |
| 225-543 | 14 x 15 | 318-282 BD | 44 ³ / ₈ | 318-282 DC | 78 ¹ / ₈ | 318-282 OV | 78 ¹ / ₈ | 9 ³ / ₄ | 12 ³ / ₄ | 5 ¹ / ₈ | 12 ¹ / ₂ | 11 | 8 ¹ / ₂ | 10 | 6 | 5 | 9 ¹ / ₂ | 8 | 8 | 7 ¹ / ₈ | 7 ¹ / ₈ |
| 225-548 | 15 x 16 | 318-305 BD | 44 ¹⁵ / ₁₆ | 318-305 DC | 78 ¹¹ / ₁₆ | 318-305 OV | 78 ¹¹ / ₁₆ | 8 ⁵ / ₁₆ | 13 ⁵ / ₁₆ | 4 ¹³ / ₁₆ | 13 ³ / ₄ | 13 ¹ / ₂ | 9 ¹ / ₂ | 11 | 8 | 6 | 11 ³ / ₄ | 8 | 8 | 7 ¹ / ₈ | 7 ¹ / ₈ |
| 225-643A | 12 x 13 | 318-393 BD | 43 ³ / ₈ | 318-393 DC | 77 ¹ / ₈ | 318-393 OV | 77 ¹ / ₈ | 0 | 12 ¹ / ₄ | 4 ⁵ / ₈ | 14 | 10 | 7 ¹ / ₂ | 9 | 5 | 4 | 8 ¹ / ₂ | 8 | 8 | 9 ³ / ₄ | 7 ¹ / ₈ |
| 225-992 | 14 x 15 | 318-547 BD | 43 ⁹ / ₁₆ | 318-547 DC | 77 ³ / ₈ | 318-547 OV | 77 ³ / ₈ | 2 ¹ / ₂ | 12 ¹ / ₄ | 4 ⁷ / ₈ | 15 | 10 | 7 ¹ / ₂ | 9 | 5 | 4 | 8 ¹ / ₂ | 8 | 8 | 9 ³ / ₄ | 7 ¹ / ₈ |
| 226-60 | 14 x 15 | 318-289 BD | 44 ⁵ / ₁₆ | 318-289 DC | 78 ¹ / ₁₆ | 318-289 OV | 78 ¹ / ₁₆ | 9 ³ / ₄ | 12 ¹¹ / ₁₆ | 5 ¹ / ₈ | 12 ¹ / ₂ | 11 | 8 ¹ / ₂ | 10 | 6 | 5 | 9 ¹ / ₂ | 8 | 8 | 7 ¹ / ₈ | 7 ¹ / ₈ |
| 226-250 | 14 x 15 | 318-394 BD | 43 ¹ / ₁₆ | 318-394 DC | 76 ¹³ / ₁₆ | 318-394 OV | 76 ¹³ / ₁₆ | 2 ¹ / ₂ | 12 ¹ / ₄ | 4 ⁵ / ₁₆ | 15 | 10 | 7 ¹ / ₂ | 9 | 5 | 4 | 8 ¹ / ₂ | 8 | 8 | 9 ³ / ₄ | 7 ¹ / ₈ |
| 228-664 | 15 x 16 | 318-213 BD | 46 ¹ / ₂ | 318-213 DC | 80 ¹ / ₄ | 318-213 OV | 80 ¹ / ₄ | 6 ⁷ / ₈ | 13 ¹¹ / ₃₂ | 6 ²¹ / ₃₂ | 15 | 16 | 11 ³ / ₄ | 13 ¹ / ₂ | 10 | 8 | 14 ¹ / ₄ | 12 | 8 | 7 ¹ / ₈ | 1 |
| 225-1145 | 15 x 16 | 318-304 BD | 44 ¹⁵ / ₁₆ | 318-304 DC | 78 ¹¹ / ₁₆ | 318-304 OV | 78 ¹¹ / ₁₆ | 8 ⁵ / ₁₆ | 13 ⁵ / ₁₆ | 4 ¹³ / ₁₆ | 13 ³ / ₄ | 13 ¹ / ₂ | 9 ¹ / ₂ | 11 | 8 | 6 | 11 ³ / ₄ | 8 | 8 | 7 ¹ / ₈ | 7 ¹ / ₈ |
| 225-1146 | 14 x 15 | 318-395 BD | 44 ³ / ₈ | 318-395 DC | 78 ¹ / ₈ | 318-395 OV | 78 ¹ / ₈ | 9 ³ / ₄ | 12 ³ / ₄ | 5 ¹ / ₈ | 12 ¹ / ₂ | 11 | 8 ¹ / ₂ | 10 | 6 | 5 | 9 ¹ / ₂ | 8 | 8 | 7 ¹ / ₈ | 7 ¹ / ₈ |

Illinois Location:

(847) 841-7867

860 Church Rd Elgin, IL 60123

Minnesota Location:

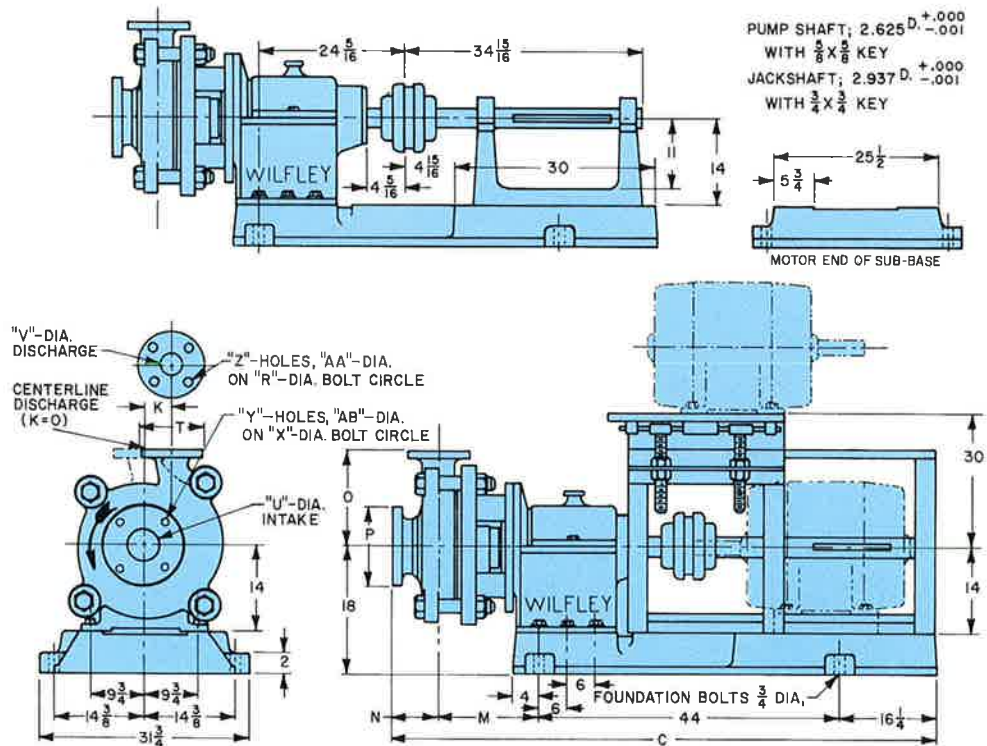
(651) 758-7867

330 Mill Bay South Suite 1511 Afton, MN 55001

PumpSupplyInc.com

All Dimensions Are in Inches
All Flanges Are 125 Lb. American Standard Cast Iron (Same as 150 Lb. American Standard Steel)

Frame 5 Metal Wetted End



| Impeller Number | Maximum Diameters | Side V-Belt Driven Style | | Direct Driven Style | | Overhead V-Belt Driven Style | | K | M | N | O | P | R | T | U | V | X | Y | Z | AA | AB |
|-----------------|-------------------|--------------------------|----------------------------------|---------------------|----------------------------------|------------------------------|----------------------------------|-------------------------------|----------------------------------|---------------------------------|--------------------------------|--------------------------------|--------------------------------|--------------------------------|----|---|--------------------------------|----|---|-------------------------------|-------------------------------|
| | | Assembly Number | C | Assembly Number | C | Assembly Number | C | | | | | | | | | | | | | | |
| 225-540 | 15 x 16 | 318-232 BDJS | 78 ¹¹ / ₁₆ | 318-232 DC | 78 ¹¹ / ₁₆ | 318-232 OVJS | 78 ¹¹ / ₁₆ | 8 ⁵ / ₈ | 13 ⁵ / ₈ | 4 ¹³ / ₁₆ | 13 ³ / ₄ | 13 ¹ / ₂ | 9 ¹ / ₂ | 11 | 8 | 6 | 11 ³ / ₄ | 8 | 8 | 7 ⁷ / ₈ | 7 ⁷ / ₈ |
| 225-543FS | 14 x 15 | 318-248 BDJS | 78 ¹ / ₄ | 318-248 DC | 78 ¹ / ₄ | 318-248 OVJS | 78 ¹ / ₄ | 9 ¹ / ₄ | 12 ³ / ₄ | 5 ¹ / ₄ | 12 ¹ / ₂ | 11 | 8 ¹ / ₂ | 10 | 6 | 5 | 9 ¹ / ₂ | 8 | 8 | 7 ⁷ / ₈ | 7 ⁷ / ₈ |
| 225-835 | 15 x 16 | 318-264 BDJS | 80 ¹ / ₄ | 318-264 DC | 80 ¹ / ₄ | 318-264 OVJS | 80 ¹ / ₄ | 6 ⁷ / ₈ | 13 ¹¹ / ₃₂ | 6 ²¹ / ₃₂ | 15 | 16 | 11 ³ / ₄ | 13 ¹ / ₂ | 10 | 8 | 14 ¹ / ₄ | 12 | 8 | 7 ⁷ / ₈ | 1 |



Illinois Location:

(847) 841-7867

860 Church Rd Elgin, IL 60123

Minnesota Location:

(651) 758-7867

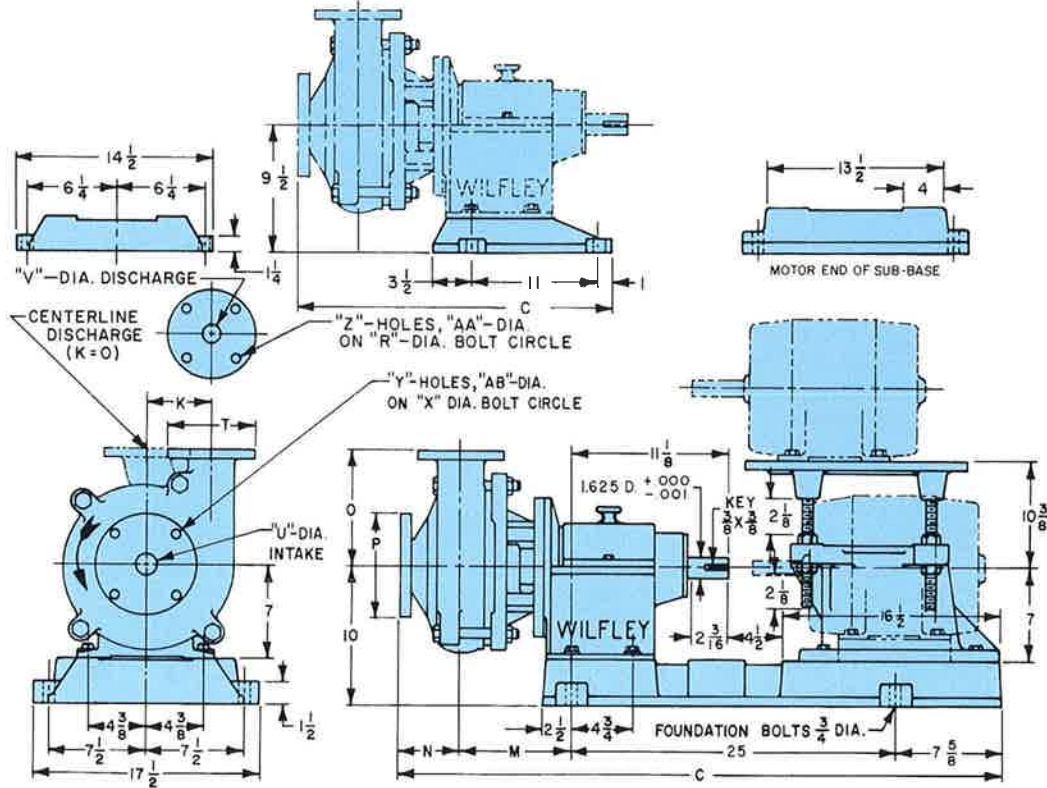
330 Mill Bay South Suite 1511 Afton, MN 55001

PumpSupplyInc.com

Metal AL dimensional and technical information available through Wilfley Engineering
 75 HP and larger motors require jackshaft design. Please consult with Wilfley Engineering
 All Dimensions Are in Inches
 All Flanges Are 125 Lb. American Standard Cast Iron (Same as 150 Lb. American Standard Steel)



Frame 1 Non-metallic Wetted End



| Impeller Number | Maximum Diameters | Side V-Belt Driven Style | | Direct Driven Style | | Overhead V-Belt Driven Style | | K | M | N | O | P | R | T | U | V | X | Y | Z | AA | AB |
|-----------------|-------------------|--------------------------|-------------------|---------------------|-------------------|------------------------------|-------------------|---|--------------------|--------------------|-------------------|---|---|------------------|---|------------------|------------------|---|---|-----|-----|
| | | Assembly Number | C | Assembly Number | C | Assembly Number | C | | | | | | | | | | | | | | |
| 226-610 | 8 x 9 | 318-314 BD | 27 ^{7/8} | 318-314 DC | 48 ^{1/2} | 318-314 OV | 48 ^{1/2} | 0 | 9 ^{3/4} | 6 ^{1/8} | 8 | 9 | 6 | 7 ^{1/2} | 2 | 1 ^{1/2} | 7 ^{1/2} | 8 | 4 | 3/4 | 3/4 |
| 228-1061 | 10 x 11 | 318-563 BD | 27 ^{3/8} | 318-563 DC | 48 | 318-563 OV | 48 | 0 | 9 ^{11/16} | 5 ^{11/16} | 10 ^{1/4} | 9 | 6 | 7 ^{1/2} | 3 | 2 ^{1/2} | 7 ^{1/2} | 8 | 4 | 3/4 | 3/4 |
| 228-1130 | 10 x 11 | 318-568 BD | 26 ^{3/4} | 318-568 DC | 47 ^{3/8} | 318-568 OV | 47 ^{3/8} | 0 | 9 ^{1/2} | 5 ^{1/4} | 10 | 9 | 6 | 7 ^{1/2} | 2 | 1 ^{1/2} | 7 ^{1/2} | 8 | 4 | 3/4 | 3/4 |



Illinois Location:

(847) 841-7867

860 Church Rd Elgin, IL 60123

Minnesota Location:

(651) 758-7867

330 Mill Bay South Suite 1511 Afton, MN 55001

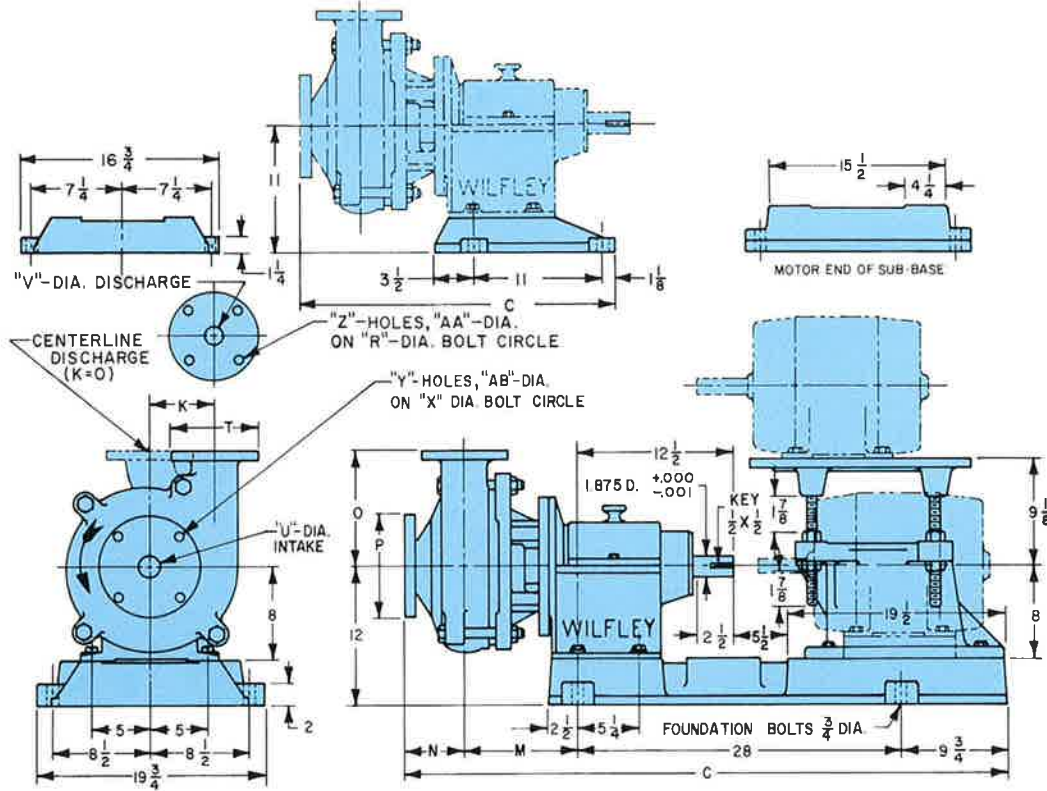
PumpSupplyInc.com

All Dimensions Are in Inches

All Flanges Are 125 Lb. American Standard Cast Iron (Same as 150 Lb. American Standard Steel)



Frame 2 Non-metallic Wetted End



| Impeller Number | Maximum Diameters | Side V-Belt Driven Style | | Direct Driven Style | | Overhead V-Belt Driven Style | | K | M | N | O | P | R | T | U | V | X | Y | Z | AA | AB |
|-----------------|-------------------|--------------------------|------------------|---------------------|------------------|------------------------------|------------------|---|------------------|-------------------|------------------|---|---|-----------------|---|-----------------|-----------------|---|---|-----------------|-----------------|
| | | Assembly Number | C | Assembly Number | C | Assembly Number | C | | | | | | | | | | | | | | |
| 226-610 | 8 x 9 | 318-308 BD | 28 $\frac{1}{4}$ | 318-308 DC | 53 $\frac{7}{8}$ | 318-308 OV | 53 $\frac{7}{8}$ | 0 | 10 | 6 $\frac{1}{8}$ | 8 | 9 | 6 | 7 $\frac{1}{2}$ | 2 | 1 $\frac{1}{2}$ | 7 $\frac{1}{2}$ | 8 | 4 | 3 $\frac{3}{4}$ | 3 $\frac{3}{4}$ |
| 228-1061 | 10 x 11 | 318-562 BD | 27 $\frac{3}{4}$ | 318-562 DC | 53 $\frac{3}{8}$ | 318-562 OV | 53 $\frac{3}{8}$ | 0 | 9 $\frac{9}{16}$ | 5 $\frac{11}{16}$ | 10 $\frac{1}{4}$ | 9 | 6 | 7 $\frac{1}{2}$ | 3 | 2 $\frac{1}{2}$ | 7 $\frac{1}{2}$ | 8 | 4 | 3 $\frac{3}{4}$ | 3 $\frac{3}{4}$ |
| 228-1130 | 10 x 11 | 318-569 BD | 27 $\frac{1}{8}$ | 318-569 DC | 52 $\frac{3}{4}$ | 318-569 OV | 52 $\frac{3}{4}$ | 0 | 9 $\frac{3}{4}$ | 5 $\frac{1}{4}$ | 10 | 9 | 6 | 7 $\frac{1}{2}$ | 2 | 1 $\frac{1}{2}$ | 7 $\frac{1}{2}$ | 8 | 4 | 3 $\frac{3}{4}$ | 3 $\frac{3}{4}$ |



Illinois Location:

(847) 841-7867

860 Church Rd Elgin, IL 60123

Minnesota Location:

(651) 758-7867

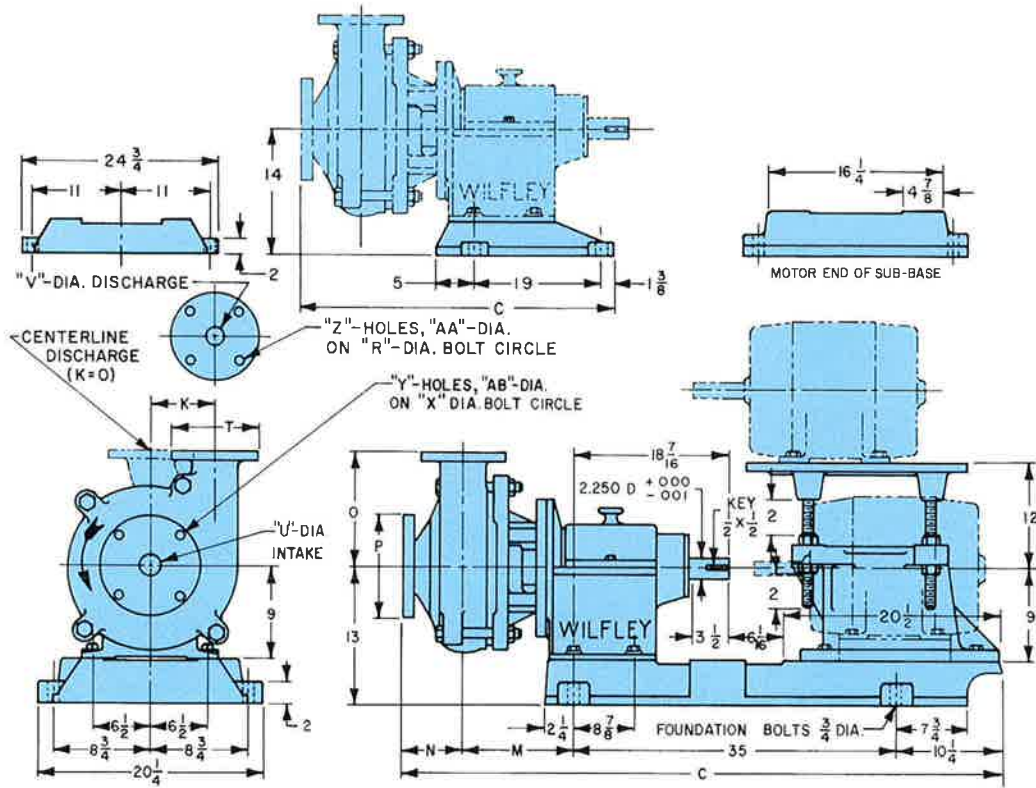
330 Mill Bay South Suite 1511 Afton, MN 55001

PumpSupplyInc.com

All Dimensions Are in Inches
All Flanges Are 125 Lb. American Standard Cast Iron (Same as 150 Lb. American Standard Steel)



Frame 3 Non-metallic Wetted End

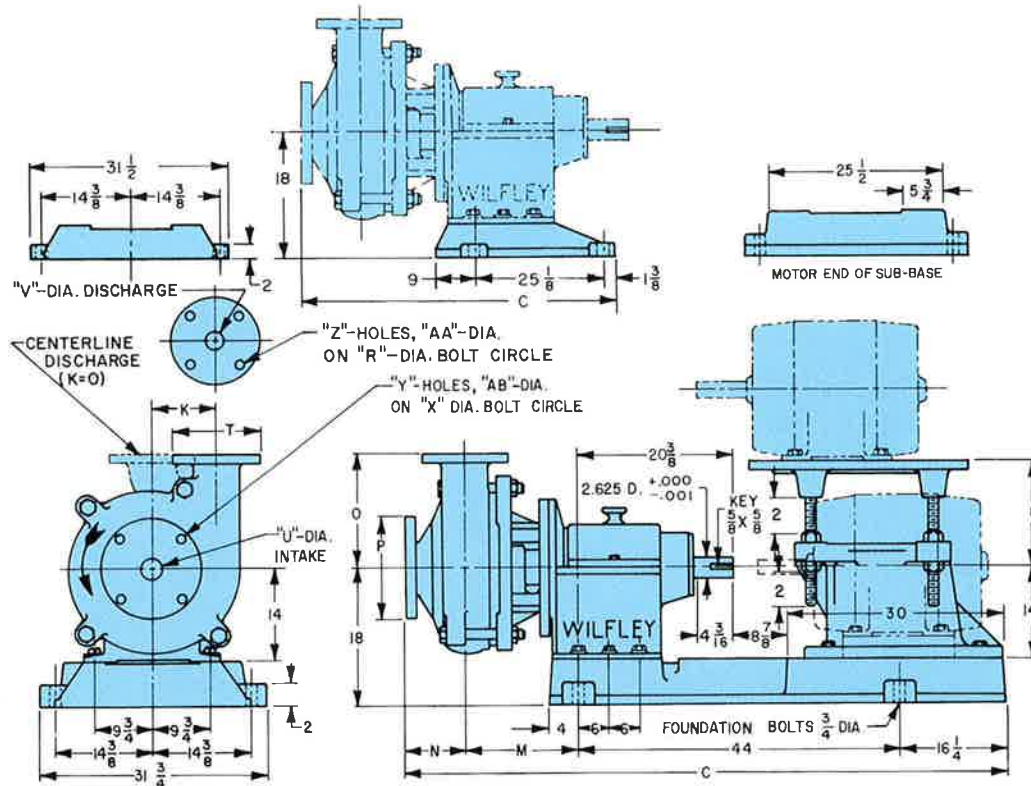


| Impeller Number | Maximum Diameters | Side V-Belt Driven Style | | Direct Driven Style | | Overhead V-Belt Driven Style | | K | M | N | O | P | R | T | U | V | X | Y | Z | AA | AB |
|-----------------|-------------------|--------------------------|---------------------------------|---------------------|---------------------------------|------------------------------|---------------------------------|---|----------------------------------|---|----|--------------------------------|-------------------------------|----|---|---|--------------------------------|---|---|-------------------------------|-------------------------------|
| | | Assembly Number | C | Assembly Number | C | Assembly Number | C | | | | | | | | | | | | | | |
| 228-148 | 11 x 12 | 318-579 BD | 38 ⁵ / ₁₆ | 318-579 DC | 63 ³ / ₁₆ | 318-579 OV | 63 ³ / ₁₆ | 0 | 10 ¹⁵ / ₁₆ | 7 | 15 | 13 ¹ / ₂ | 9 ¹ / ₂ | 11 | 6 | 5 | 11 ³ / ₄ | 8 | 8 | 7 ⁷ / ₈ | 7 ⁷ / ₈ |
| 228-973 | 10 x 11 | 318-522 BD | 39 | 318-522 DC | 63 ⁷ / ₈ | 318-522 OV | 63 ⁷ / ₈ | 0 | 11 ⁵ / ₈ | 7 | 12 | 11 | 8 ¹ / ₂ | 10 | 5 | 4 | 9 ¹ / ₂ | 8 | 8 | 7 ⁷ / ₈ | 7 ⁷ / ₈ |

All Dimensions Are in Inches
 All Flanges Are 125 Lb. American Standard Cast Iron (Same as 150 Lb. American Standard Steel)



Frame 4 Non-metallic Wetted End



| Impeller Number | Maximum Diameters | Side V-Belt Driven Style | | Direct Driven Style | | Overhead V-Belt Driven Style | | K | M | N | O | P | R | T | U | V | X | Y | Z | AA | AB |
|-----------------|-------------------------------------|--------------------------|----------------------------------|---------------------|---------------------------------|------------------------------|---------------------------------|---|----------------------------------|-------------------------------|----|--------------------------------|--------------------------------|--------------------------------|---|---|---------------------------------|----|---|--------------------------------|--------------------------------|
| | | Assembly Number | C | Assembly Number | C | Assembly Number | C | | | | | | | | | | | | | | |
| 228-148 | 11 x 12 | 318-78 BD | 46 | 318-78 DC | 79 ⁹ / ₁₆ | 318-78 OV | 79 ⁹ / ₁₆ | 0 | 12 ¹ / ₂ | 7 | 15 | 13 ¹ / ₂ | 9 ¹ / ₂ | 11 | 6 | 5 | 11 ⁹ / ₁₆ | 8 | 8 | 7 ⁷ / ₁₆ | 7 ⁷ / ₁₆ |
| 228-1054 | 12 ¹ / ₂ x 13 | 318-110 BD | 46 ¹⁵ / ₃₂ | 318-110 DC | 80 ⁷ / ₃₂ | 318-110 OV | 80 ⁷ / ₃₂ | 0 | 12 ²⁷ / ₃₂ | 7 ¹ / ₈ | 17 | 16 | 11 ³ / ₄ | 13 ¹ / ₂ | 8 | 6 | 14 ¹ / ₄ | 12 | 8 | 7 ⁷ / ₁₆ | 1 |



Illinois Location:

(847) 841-7867

860 Church Rd Elgin, IL 60123

Minnesota Location:

(651) 758-7867

330 Mill Bay South Suite 1511 Afton, MN 55001

PumpSupplyInc.com

All Dimensions Are in Inches
 All Flanges Are 125 Lb. American Standard Cast Iron (Same as 150 Lb. American Standard Steel)