



# CHEMFLO<sup>®</sup> 4

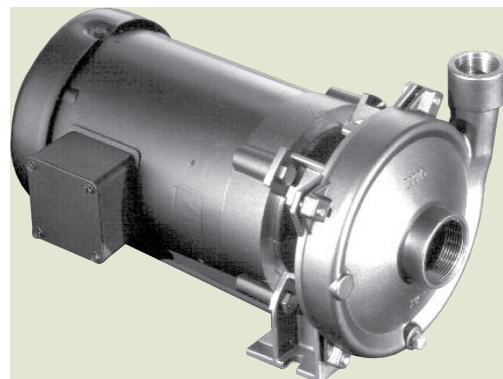
## 2" x 1-1/2" End Suction Centrifugal Pump

Made with high quality investment cast 316 stainless steel components, the ChemFlo<sup>®</sup> series of pumps are designed to be applied in a wide range of pumping applications where stainless steel is required.

The ChemFlo<sup>®</sup> 4 pumps utilize a semi-open impeller design to allow for passage of larger solid sizes than similar sized enclosed impellers. Several seal options are available in addition to the standard type 2100 carbon / ceramic / Viton mechanical seal.

ChemFlo<sup>®</sup> 4 pumps are offered in two configurations, pump (with motor) and PumPAK<sup>®</sup> (without motor) versions. Electric and hydraulic motors can be close coupled to ChemFlo<sup>®</sup> 4 pumps or pedestal mounted versions are also available for long coupling.

Further expanding the versatility of the ChemFlo<sup>®</sup> series is the CFB 4 pump, a ChemFlo<sup>®</sup> 4 in NiBrAl material. All wetted parts are produced in CA 958 nickel aluminum bronze including the drive sleeve to maximize corrosion protection in seawater applications.



### Application:

- Agricultural
- Commercial
- Industrial
- Marine
- OEM

### Drive Sleeve:

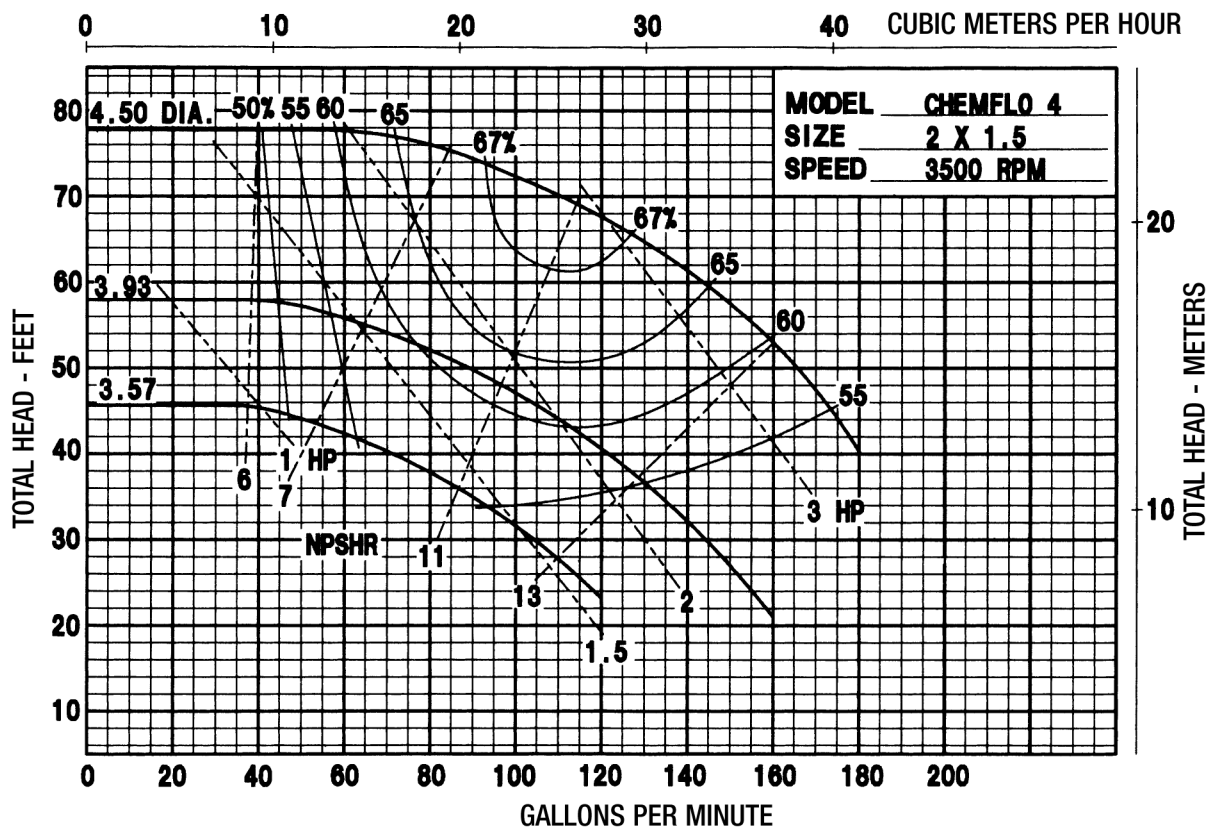
- 316 stainless steel

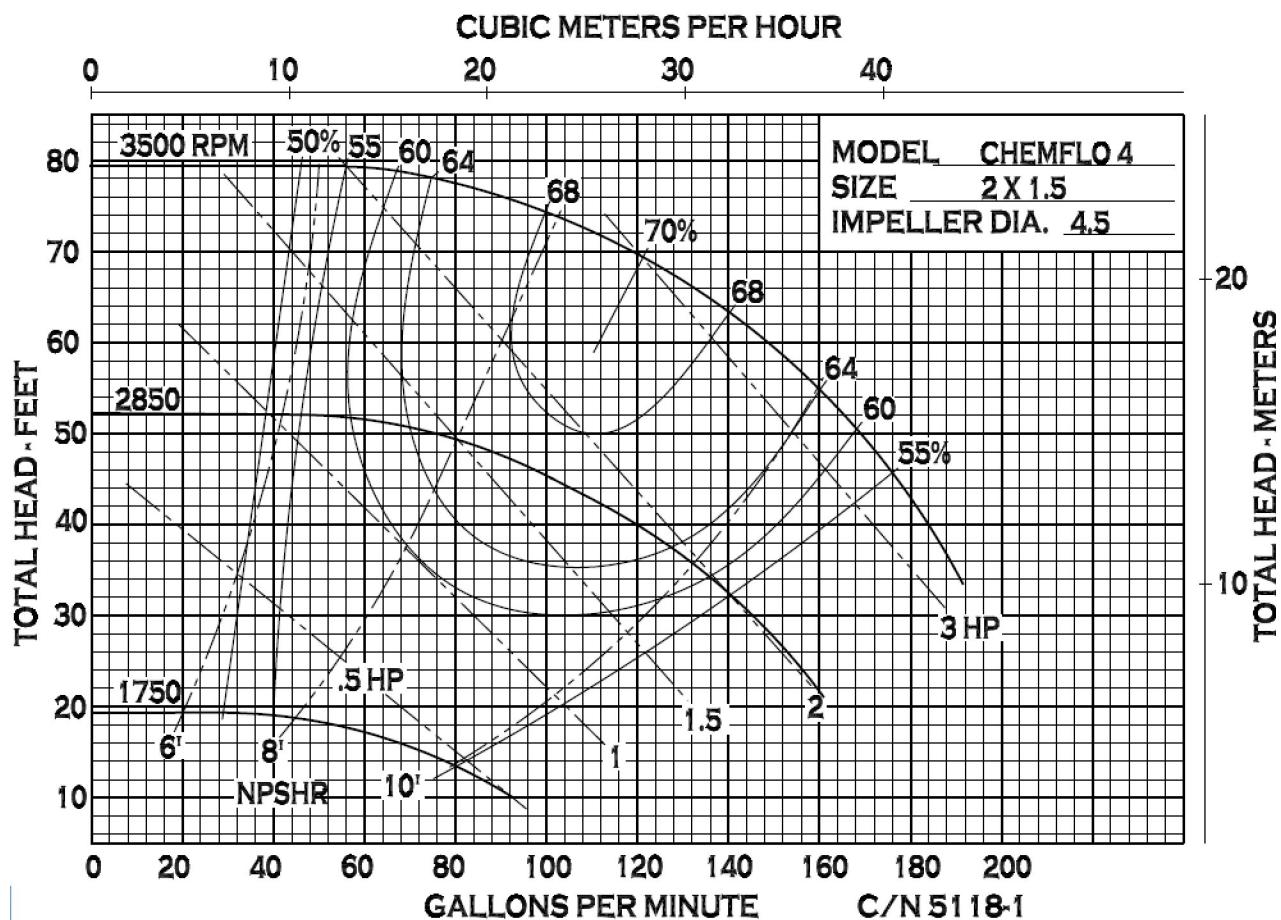
### Options:

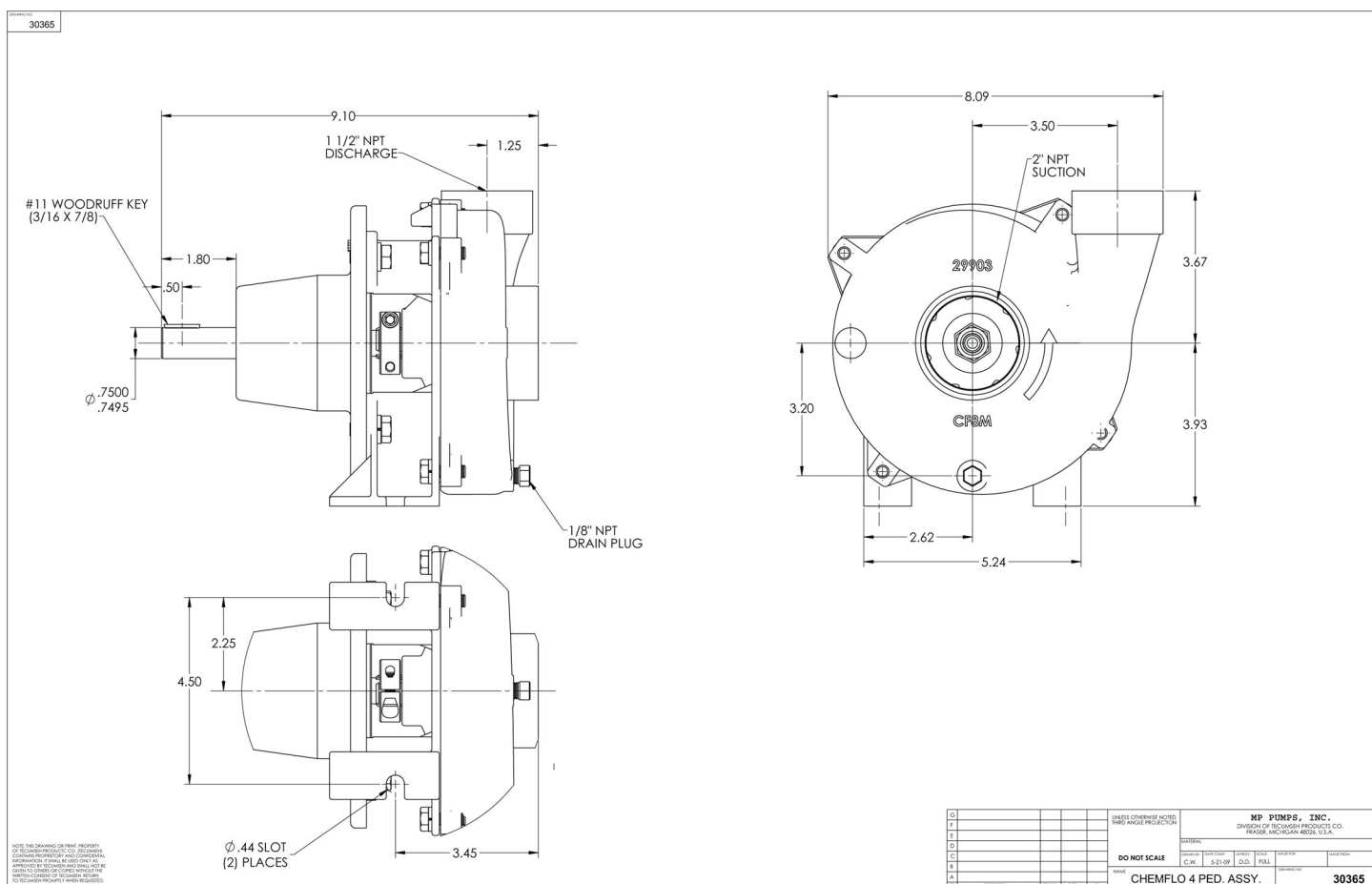
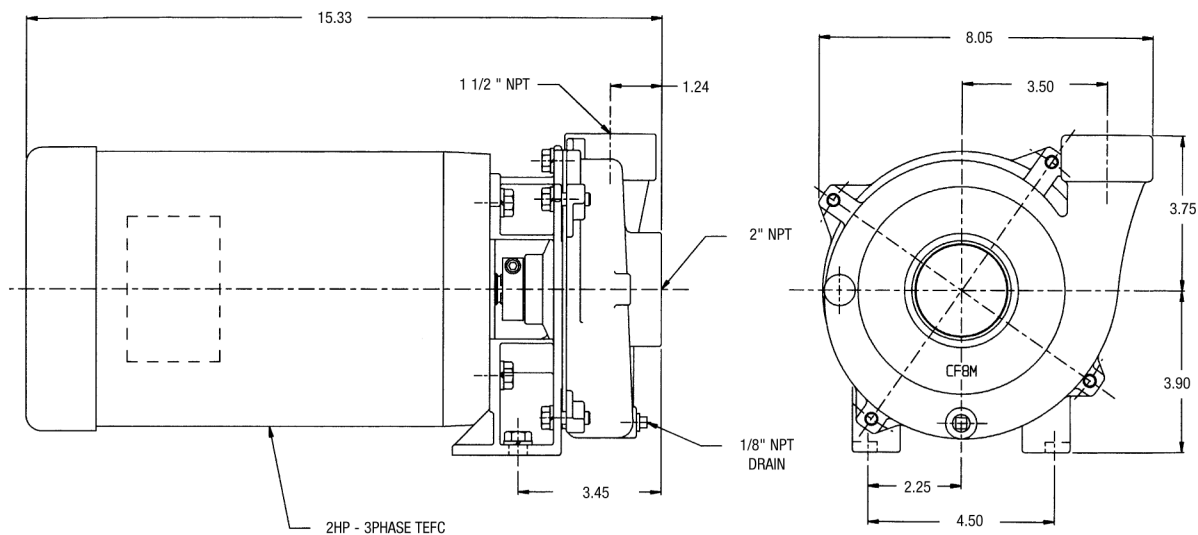
- Hydraulic motor .22 cu. in.
- Hydraulic motor .37 cu. in.
- Tap for recirculation or seal flush

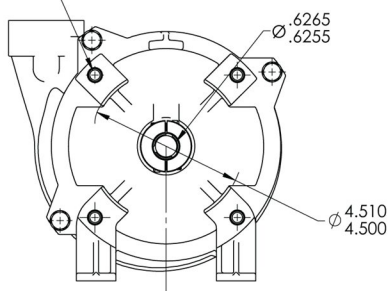
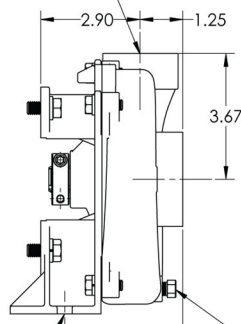
## SPECIFICATIONS:

Suction and Discharge	.. 2" x 1-1/2" NPT
Materials of Construction	316 stainless steel CFB (nickel aluminum bronze)
Flow	..... Up to 180 GPM
Head Feet	..... Up to 75'
Impeller	..... 4.5" semi-open, cast 316 SS
Motor	..... Up to 3 HP
Drive Options	..... Close coupled 145TC Close coupled 184C Close coupled 56C Pedestal PumPAK <sup>®</sup> (without motor)
Seal	..... Special seal material combinations available (consult factory) Standard carbon / ceramic / Viton

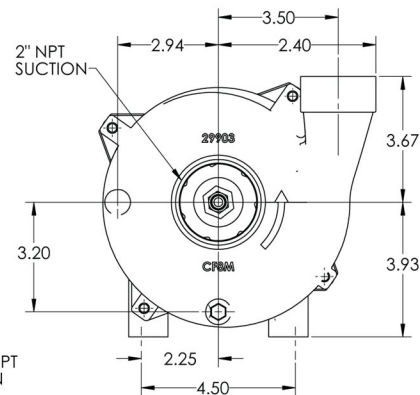






DRAWING NO.  
29918(4) 3/8-16 X .75  
HEX HD SCREWS  
ON A Ø5.880 B.C.1 1/2" NPT  
DISCHARGE

.22R. SLOT

1/8" NPT  
DRAIN

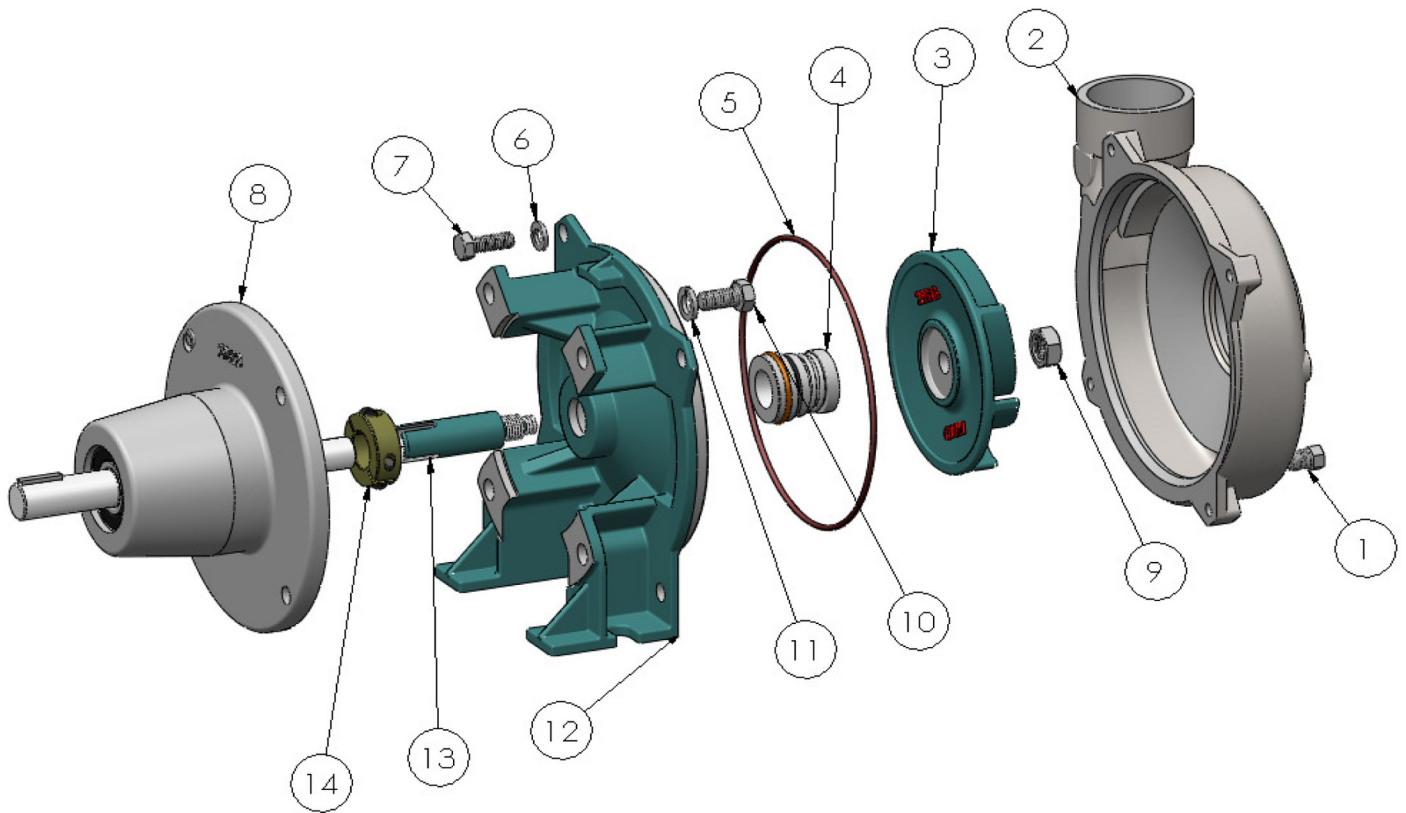
NOTE: THIS DRAWING OR PRINT, PROPERTY  
OF MP PUMPS INC. CONTAINS PROPRIETARY AND CONFIDENTIAL  
INFORMATION. IT SHALL BE USED ONLY AS  
APPROVED BY MP PUMPS AND SHALL NOT BE  
GIVEN TO OTHERS OR COPIED WITHOUT THE  
WRITTEN CONSENT OF MP PUMPS. RETURN  
TO MP PUMPS PROMPTLY WHEN REQUESTED.

W/4.50 DIA. IMPELLER

G					UNLESS OTHERWISE NOTED THIRD ANGLE PROJECTION	MP PUMPS, INC. MP PUMPS INC. FRASER, MICHIGAN 48026, U.S.A.			
F					2 PLACE DIM 3 PLACE DIM ANGULAR DIM	MATERIAL	DATE COMP.	APPROV.	SCALE
E					DO NOT SCALE	STAINLESS STEEL	12-16-11	D.D.	FULL
D									MADE FOR
C									MADE FROM
B									
A									
REV	DESCRIPTION	DRAWN	DATE	BY	NAME	CF 4 PUMPAK			
						DRAWING NO. 29918			



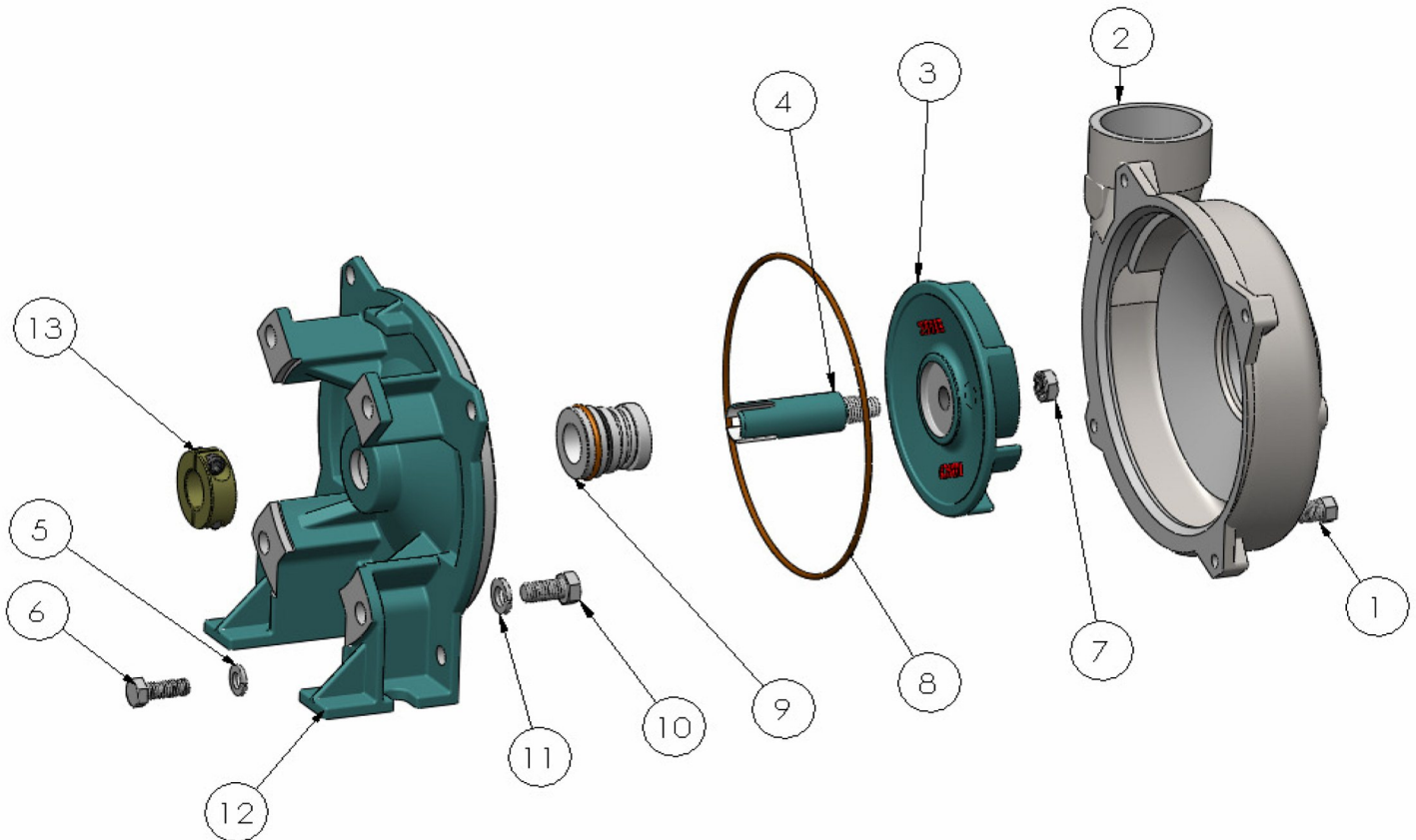
34800 BENNETT • FRASER, MI 48026-1686  
(586) 293-8240 • FAX (586) 293-8469  
(800) 563-8006 • www.mppumps.com



ITEM NO.	PART NO.	DESCRIPTION	QTY.
1	21255	PIPE PLUG S.S. - 1/8 NPT	1
2	29904	HOUSING S.S.	1
3	29914	IMPELLER S.S. - 4.50 DIA.	1
* 4	30061	SEAL ASSY. - 3/4" T-2100 VITON	1
* 5	29715	O RING - VITON	1
6	21238	LOCKWASHER S.S. - 5/16	4
7	21242	HEX HD. CAPSCREW S.S. - 5/16-18 X .88	4
8	29670	PEDESTAL ASSY.	1
9	35598	HEX JAM NUT S.S.	1
10	25663	HEX. HD. CAPSCREW S.S. - 3/8-16 X 3.4	4
11	21266	LOCKWASHER S.S. - 3/8	4
12	29908	ADAPTER	1
13	29785	DRIVE SLEEVE S.S.	1
14	28049	CLAMP	1

\*- RECOMMENDED REPLACEMENT PARTS

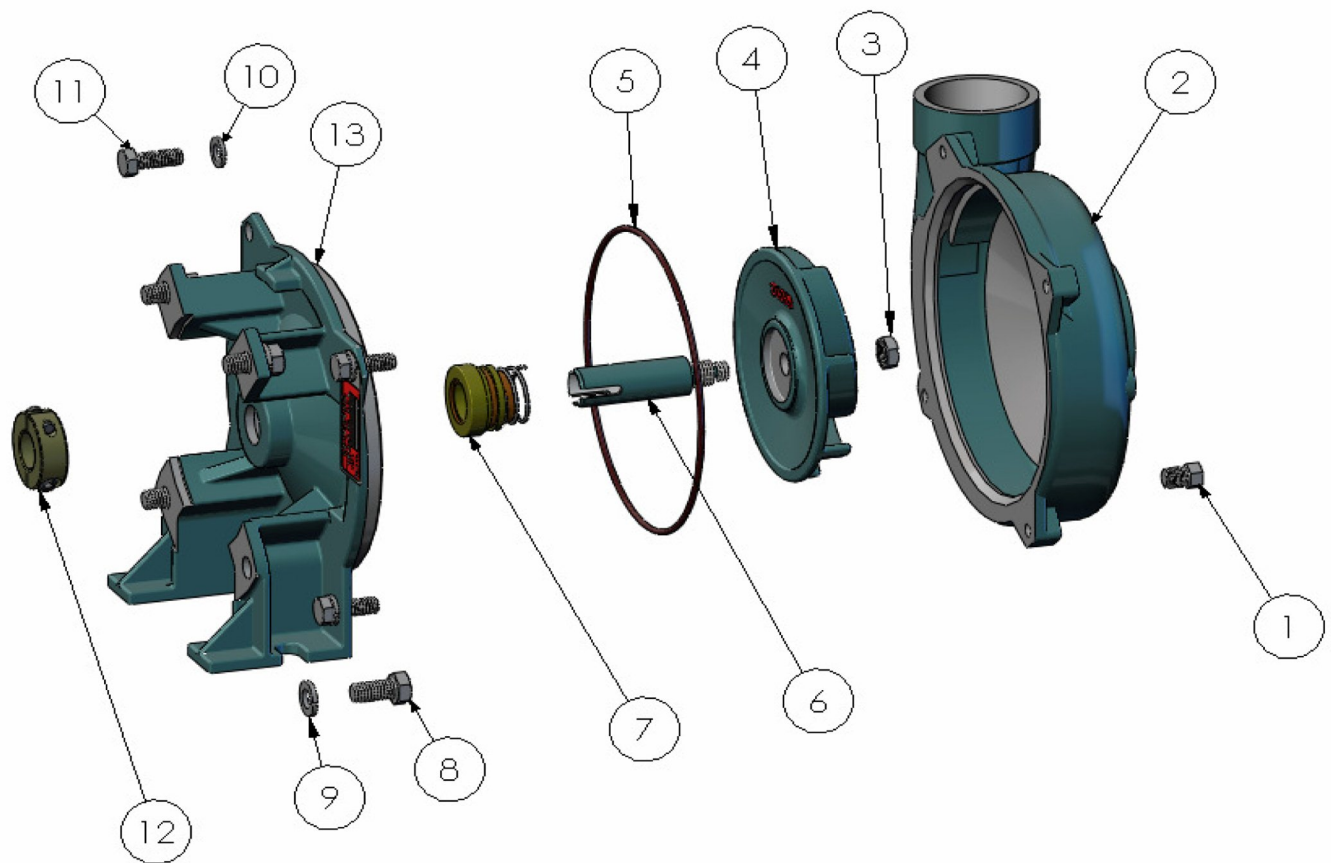
29918



ITEM NO.	PART NO.	DESCRIPTION	QTY.
1	21255	PIPE PLUG S.S. - 1/8 NPT	1
2	29904	HOUSING S.S.	1
3	29914	IMPELLER S.S. - 4.50 DIA.	1
4	29785	DRIVE SLEEVE S.S.	1
5	21238	LOCKWASHER S.S. - 5/16	4
6	21242	HEX HD. CAPSCREW S.S. - 5/16-18 X .88	4
7	35598	HEX JAM NUT S.S.	1
8	29715	O RING - VITON	1
9	30061	SEAL ASSY. - 3/4" T-2100 VITON	1
10	25663	HEX. HD. CAPSCREW S.S. - 3/8-16 X 3.4	4
11	21266	LOCKWASHER S.S. - 3/8	4
12	29908	ADAPTER S.S.	1
13	28049	CLAMP STL. - 3/4"	1

\*- RECOMMENDED REPLACEMENT PARTS





ITEM NO.	PART NO.	DESCRIPTION	QTY.
1	36355	PIPE PLUG BRONZE - 1/8 NPT	1
2	36343	HOUSING BRONZE	1
3	36354	HEX JAM NUT BRONZE - 3/8-24	1
4	36351	IMPELLER BRONZE - 4.50 DIA.	1
* 5	29715	O RING - VITON	1
6	36353	DRIVE SLEEVE BRONZE	1
* 7	30061	SEAL ASSY. - 3/4" T-2100	1
8	25663	HEX HD. CAPSCREW S.S. - 3/8-16 X .75	4
9	21266	LOCKWASHER S.S. - 3/8	4
10	21238	LOCKWASHER S.S. - 5/16	4
11	21242	HEX HD. CAPSCREW S.S. - 5/16-18 X .88	4
12	36384	CLAMP S.S. - 3/4" SL.	1
13	36345	ADAPTER BRONZE - 56C	1

\*- RECOMMENDED REPLACEMENT PARTS