



CHEMFLO[®] 8

3" x 1-1/2" End Suction Centrifugal Pump

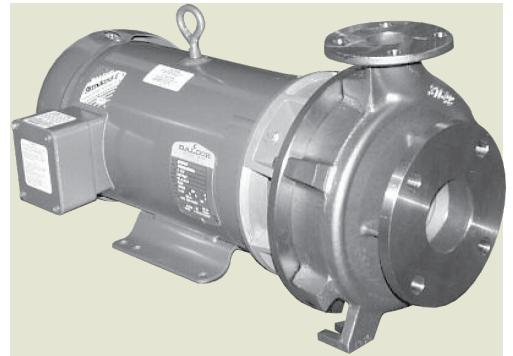
Made with high quality investment cast 316 stainless steel components, the ChemFlo[®] series of pumps are designed to be applied in a wide range of pumping applications where stainless steel is required.

The ChemFlo[®] 8 pumps utilize an enclosed impeller designed for achieving higher heads and efficiencies than a standard semi-open impeller. Multiple impeller trims allow the ChemFlo[®] 8 to meet most duty points up to 350 GPM and total head up to 290 feet. Several mechanical seal options are available in addition to the standard type 2100 carbon / ceramic / Viton mechanical seal.

ChemFlo[®] 8 pumps are offered in two configurations, pump (with motor) and PumPAK[®] (without motor) versions. Electric and hydraulic motors can be close coupled to ChemFlo[®] 8 pumps or pedestal mounted versions are also available for long coupling.

SPECIFICATIONS:

Suction and Discharge	3" x 1-1/2" 125# ANSI flange
Materials of Construction	316 stainless steel
Flow	Up to 350 GPM
Head Feet	Up to 290'
Impeller	8.0" enclosed, cast 316 stainless steel
Motor	Up to 25 HP
Drive Options	Close coupled 145TC Close coupled 184TC Close coupled 215TC Close coupled 286TSC Close coupled 356TC Pedestal PumPAK [®] (without motor)
Seal	Special seal material combinations available (consult factory) Standard carbon / ceramic / Viton



Application:

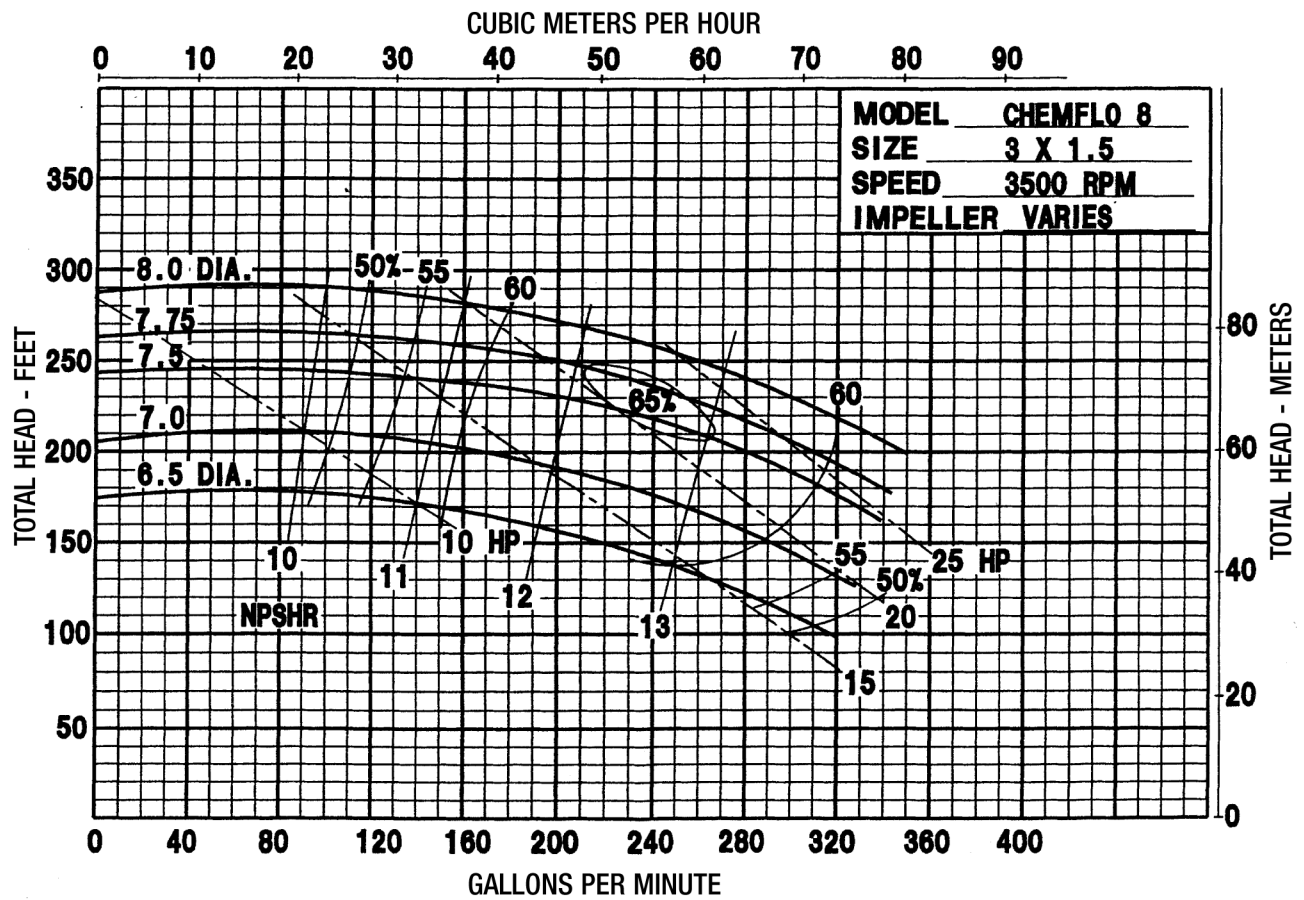
- Agricultural
- Commercial
- Industrial
- Marine
- OEM

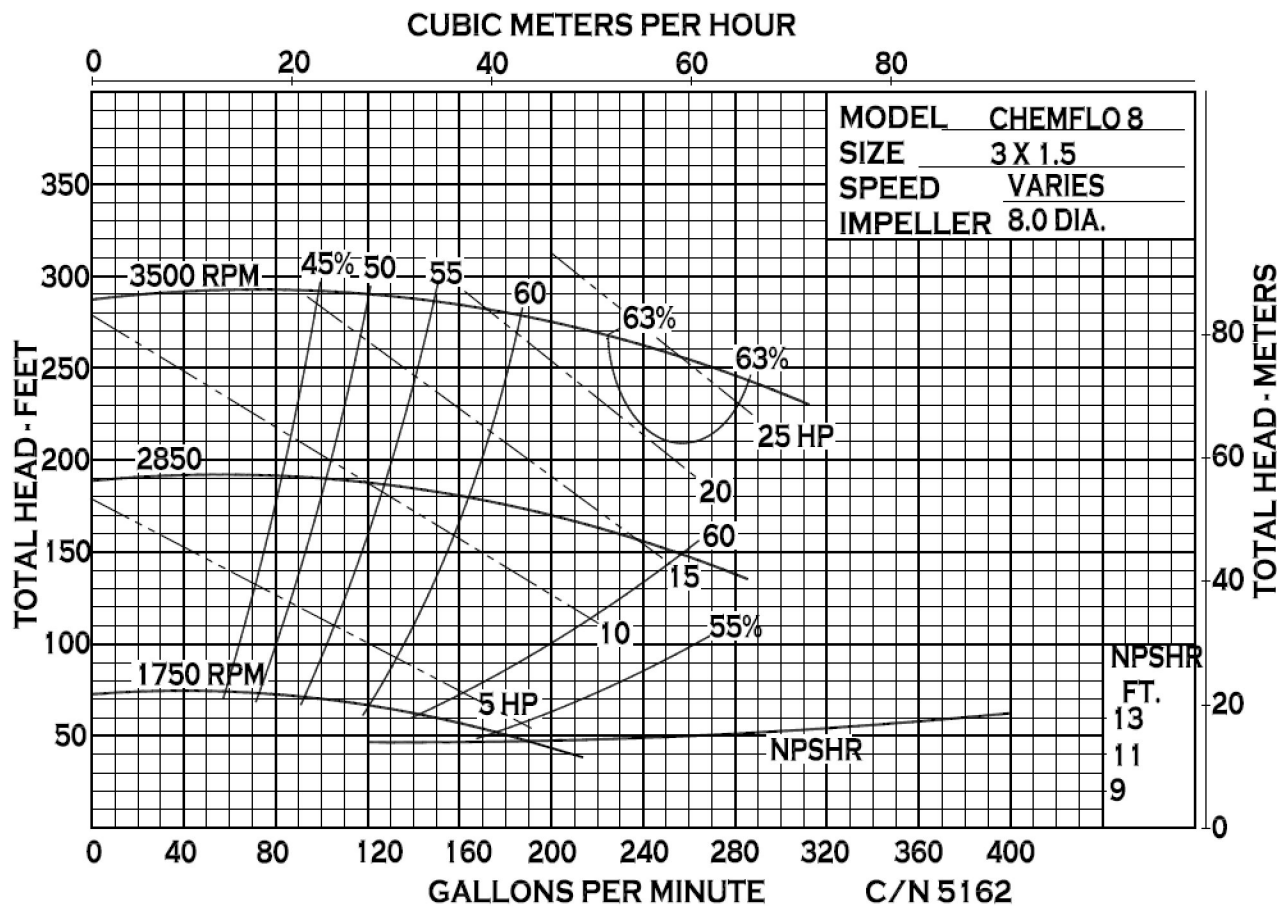
Drive Sleeve:

- 316 stainless steel

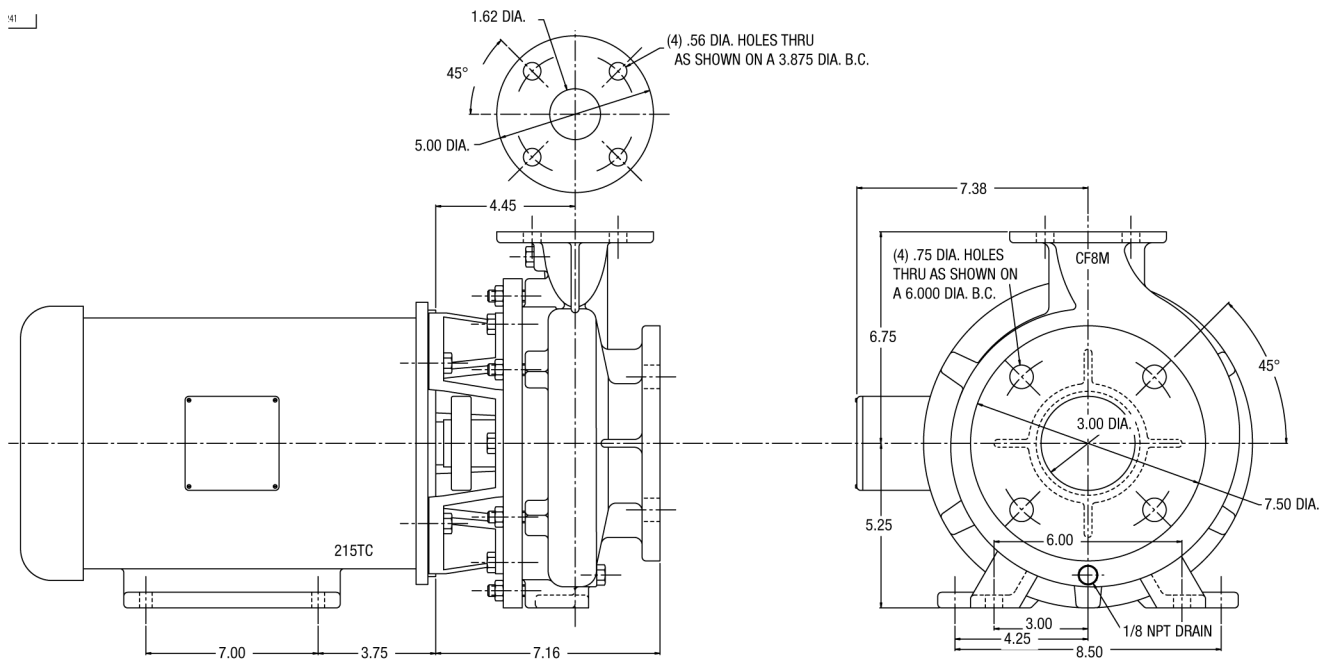
Options:

- Hydraulic motor 1.59 cu. in.
- Tap for recirculation or seal flush

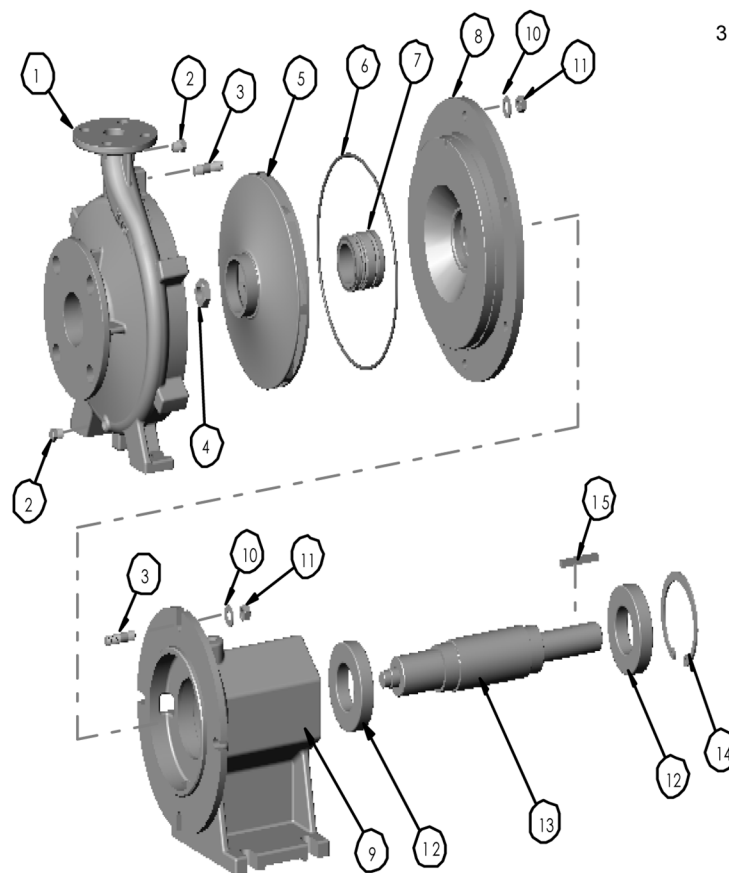




91



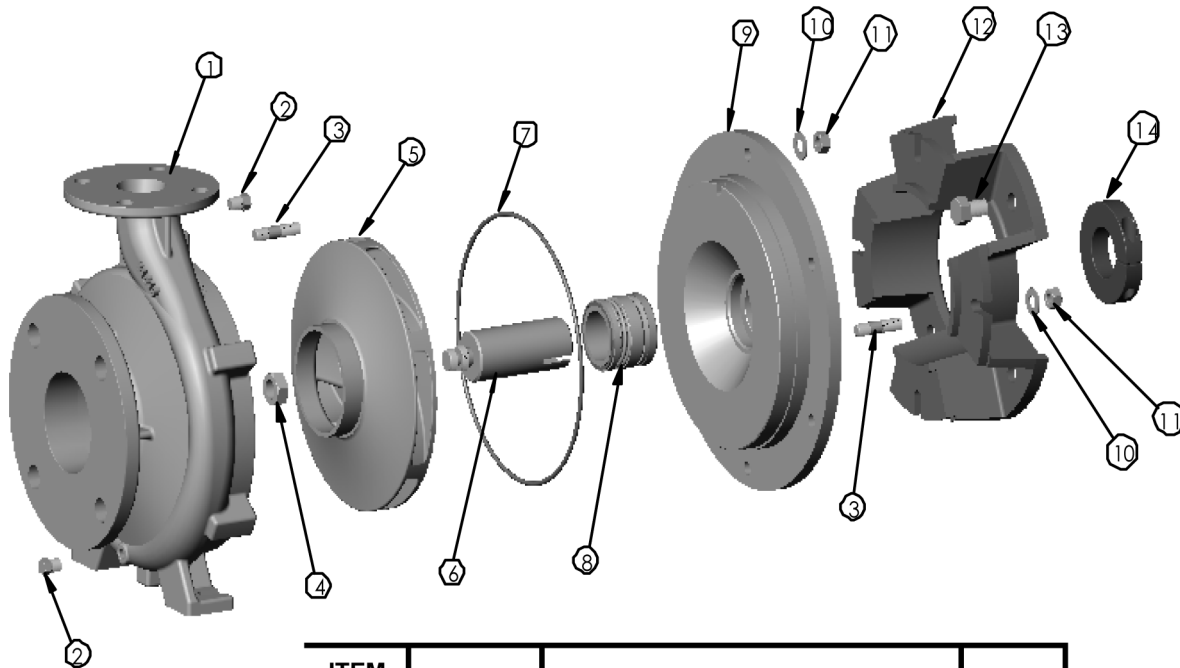
31805



ITEM NO.	PART NO.	DESCRIPTION	QTY.
1	31650	VOLUTE S.S.	1
2	21255	PIPE PLUG S.S.- 1/8" NPT	2
3	21261	STUD S.S.- 3/8-16 X 1 5/8"	10
4	29194	HEX JAM NUT S.S.- 5/8-18	1
5	31648	IMPELLER S.S.- 7.95" DIA.	1
6	31430	O-RING- VITON	1
7	31374	MECH. SEAL- 1.5" T-2100	1
8	31426	SEAL HOUSING S.S.	1
9	31656	BEARING HOUSING	1
10	28053	WASHER S.S.- 3/8	10
11	21268	HEX NUT S.S.- 3/8-16	10
12	31804	BALL BEARING	2
13	31802	DRIVE SHAFT S.S.	1
14	31803	SNAP RING	1
15	26796	SQUARE KEY- .25"	1

*- RECOMMENDED REPLACEMENT PARTS

31925

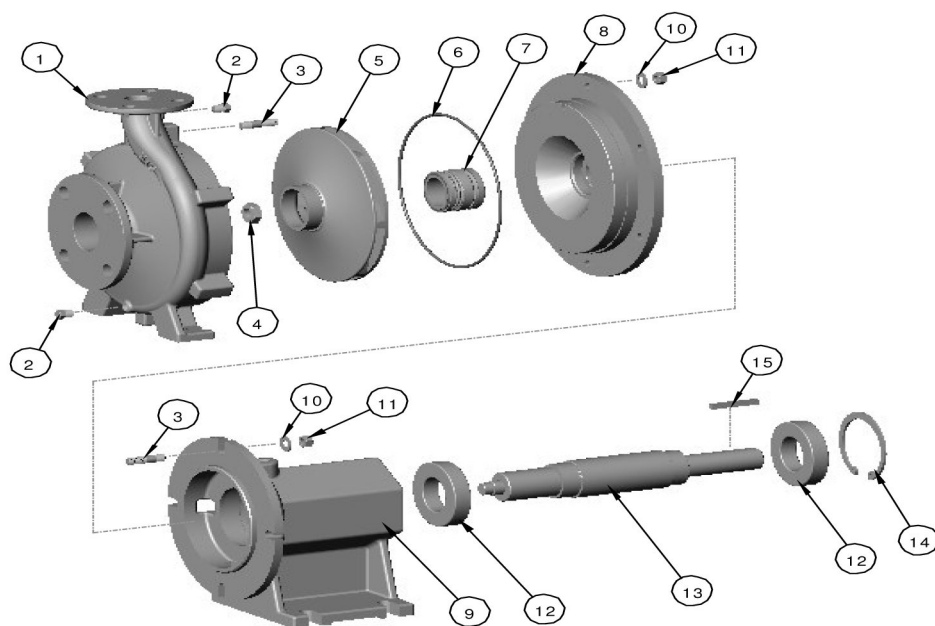


ITEM NO.	PART NO.	DESCRIPTION	QTY.
1	31650	VOLUTE S.S.	1
2	21255	PIPE PLUG S.S.- 1/8" NPT	2
3	21261	STUD S.S.- 3/8-16 X 1 5/8"	10
4	29194	HEX JAM NUT S.S.- 5/8-18	1
5	31648	IMPELLER S.S.- 7.95" DIA.	1
6	31311	DRIVE SLEAVE S.S.	1
7	31430	O-RING- VITON	1
8	31374	MECH. SEAL- 1.5" T-2100	1
9	31426	SEAL HOUSING S.S.	1
10	28053	WASHER S.S.- 3/8"	10
11	21268	HEX NUT S.S.- 3/8-16	10
12	31091	MOTOR ADAPTER- 184TC/215TC	1
13	31235	CAP SCREW S.S.- 1/2-13	4
14	31312	CLAMP- 1.5"	1

*- RECOMMENDED REPLACEMENT PARTS

CHEMFLO 7 & 8

Pedestal Pump

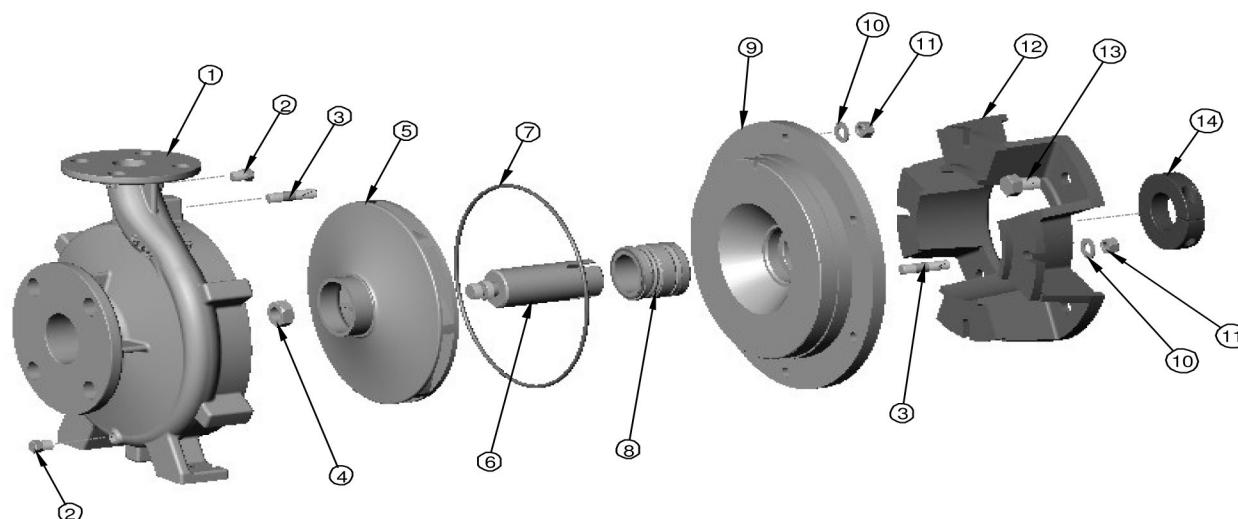


ITEM NO.	PART NO.	DESCRIPTION	QTY.
1	31424	VOLUTE S.S. CHEM 7 2 x 1	1
	31650	VOLUTE S.S. CHEM 8 3 x 1.5	1
2	21255	PIPE PLUG S.S.- 1/8" NPT	2
3	21261	STUD S.S.- 3/8-16 X 1 5/8"	10
* 4	29194	HEX JAM NUT S.S.- 5/8-18	1
5	31429	IMPELLER S.S.- 7.95" CF7	1
	31648	IMPELLER S.S.- 7.95" CF8	1
* 6	31430	O-RING- VITON	1
* 7	31374	MECH. SEAL- 1.5" T-2100	1
8	31426	SEAL HOUSING S.S.	1
9	31656	BEARING HOUSING	1
10	28053	WASHER S.S.- 3/8	10
11	21268	HEX NUT S.S.- 3/8-16	10
* 12	31804	BALL BEARING	2
13	31802	DRIVE SHAFT S.S.	1
14	31803	SNAP RING	1
15	33232	SQUARE KEY- .25"	1

7089-A

CHEMFLO 7 & 8

Pumpak



ITEM NO.	PART NO.	DESCRIPTION	QTY.
1	31424	VOLUTE S.S. CHEM7 2 x 1	1
	31650	VOLUTE S.S. CHEM8 3 x 1.5	1
2	21255	PIPE PLUG S.S.- 1/8" NPT	2
3	21260	STUD S.S. - 3/8-16 X 1.44"	10
4	29194	HEX JAM NUT S.S. - 5/8-18	1
5	31429	IMPELLER S.S.- 7.95" CHEM 7	1
	31648	IMPELLER S.S.- 7.95" CHEM 8	1
6	31806	DRIVE SLEEVE S.S. 145TC	1
	31094	DRIVE SLEEVE S.S. 184TC	1
	31311	DRIVE SLEEVE S.S. 215TC	1
7	31430	O-RING- VITON	1
8	31374	MECH. SEAL- 1.5" T-2100	1
9	31426	SEAL HOUSING S.S.	1
10	28053	WASHER S.S.- 3/8"	10
11	21268	HEX NUT S.S.- 3/8-16	10
12	31711	MOTOR ADAPTER- 145TC	1
	31091	MOTOR ADAPTER- 184TC/215TC	1
13	31235	CAP SCREW S.S.- 1/2-13	4
14	23039	CLAMP ASSY 1" 145TC	1
	31099	CLAMP - 1.38" 184TC	1
	31312	CLAMP- 1.5" 215TC	1

7090-A