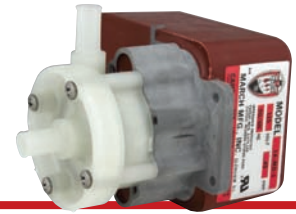


MODEL 1A-MD-3/8



MODEL AC-1A-MD-1/2



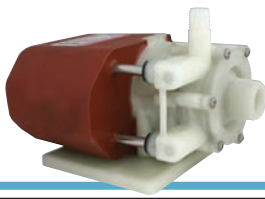
MODEL AC-1A-MD



SERIES 1

SERIES 1	AC-1A-MD-3/8	AC-1A-MD-1/2	AC-1C-MD	1A-MD-3/8	1A-MD-1/2	1C-MD	1U-MD
Max Flow	2.3 GPM	3 GPM	3 GPM	2.3 GPM	3 GPM	3 GPM	3 GPM
Max Head	4.6 Feet	4.6 Feet	4.6 Feet	4.6 Feet	4.6 Feet	4.6 Feet	4.6 Feet
Inlet	3/8" OD	1/2" OD	1/4" MPT	3/8" OD	1/2" OD	1/4" MPT	Screen
Outlet	3/8" OD	1/2" OD	1/4" MPT	3/8" OD	1/2" OD	1/4" MPT	1/4" MPT
HP	1/200	1/200	1/200	1/200	1/200	1/200	1/200
RPM	3200	3200	3200	3200	3200	3200	3200
Volts	115 or 230	115 or 230	115 or 230	115 or 230	115 or 230	115 or 230	115 or 230
Phase	1	1	1	1	1	1	1
Amps	0.45 0.23	0.45 0.23	0.45 0.23	0.45 0.23	0.45 0.23	0.45 0.23	0.45 0.23
Motor Type	Air Cooled	Air Cooled	Air Cooled	TE/SUB	TE/SUB	TE/SUB	TE/SUB
Elec. Connect.	Leads	Leads	Leads	Cord	Cord	Cord	Cord
Max Int. Press.	50 PSI	50 PSI	50 PSI	50 PSI	50 PSI	50 PSI	50 PSI
Max Liquid Temp.	190 F	190 F	190 F	190F Open Air, 160F Sub	190F Open Air, 160F Sub	190F Open Air, 160F Sub	190F Open Air, 160F Sub
Weight Packed	2.3 lbs.	2.3 lbs.	2.3 lbs.	2.5 lbs.	2.5 lbs.	2.5 lbs.	2.5 lbs.
Materials in Contact	Polypropylene, Nylon, Buna N, 316 SS, Carbon/Teflon, Ceramic Magnet	Polypropylene, Nylon, Buna N, 316 SS, Carbon/Teflon, Ceramic Magnet	Polypropylene, Nylon, Buna N, 316 SS, Carbon/Teflon, Ceramic Magnet	Polypropylene, Nylon, Buna N, 316 SS, Carbon/Teflon, Ceramic Magnet	Polypropylene, Nylon, Buna N, 316 SS, Carbon/Teflon, Ceramic Magnet	Polypropylene, Nylon, Buna N, 316 SS, Carbon/Teflon, Ceramic Magnet *	Polypropylene, Nylon, Buna N, 316 SS, Carbon/Teflon, Ceramic Magnet *

*When submerged in solution, also in contact: epoxy, noryl, cycolac, delrin, cord



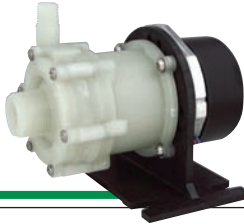
MODEL LC-2CP-MD



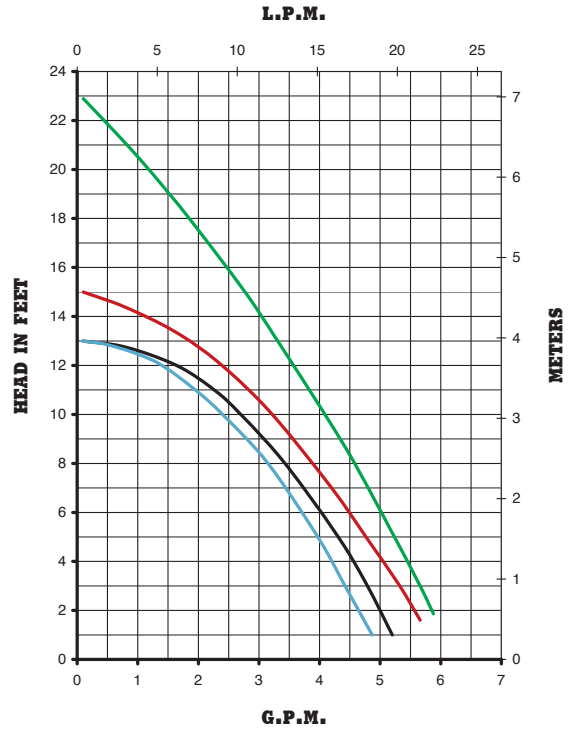
MODEL AC-2CP-MD



MODEL BC-2CP-MD Brush



MODEL BC-2CP-MD Brushless



SERIES 2

SERIES 2	2CP-MD	LC-2CP-MD	AC-2CP-MD	BC-2CP-MD	BC-2CP-MD Brush-Type	BC-2CP-MD Brushless
Max Flow	5 GPM	5 GPM	5 GPM	5 GPM	6 GPM	6 GPM
Max Head	13 Feet	13 Feet	13 Feet	13 Feet	15 Feet	23 Feet
Inlet	3/8" FPT and 3/4" MPT	3/8" FPT and 3/4" MPT	3/8" FPT and 3/4" MPT	3/8" FPT and 3/4" MPT	3/8" FPT and 3/4" MPT	3/8" FPT and 3/4" MPT
Outlet	1/4" MPT	1/4" MPT	1/4" MPT	1/4" MPT	1/4" MPT	1/4" MPT
HP	1/35	1/35	1/40	1/40	1/25	—
RPM	3450	3450	3450	3450	3450	3450
Volts	115 or 230	115 or 230	115 or 230	115 or 230	12V or 24V	12V (10-14) or 24V (20-28)
Phase	1	1	1	1	DC	DC
Amps	0.92 0.53	0.92 0.53	1.2 0.6	1.2 0.5	1.4 0.7	3.1 1.6
Motor Type	SUB Blue	TE/SUB Maroon	Air Cooled	Blast Cooled	Air Cooled	Air Cooled
Elec. Connect.	Cord	Cord	Cord	Cord	Leads	Leads
Max Int. Press.	50 PSI	25 PSI	50 PSI	50 PSI	50 PSI	50 PSI
Max Liquid Temp.	130 F	130 F	190 F	190 F	190 F	190 F
Weight Packed	5 lbs.	5 lbs.	4.5 lbs.	6.5 lbs.	4 lbs.	2 lbs.
Materials in Contact	Polypropylene, Ceramic, Viton, Stainless Steel, Ceramic Magnet ***	Polypropylene, Ceramic, Viton, Stainless Steel, Ceramic Magnet ***	Polypropylene, Ceramic, Viton, Ceramic Magnet *	Polypropylene, Ceramic, Viton *	Polypropylene, Ceramic, Viton *	Polypropylene, Ceramic, Viton *

*Smooth inlet/outlet available

***When submerged, also in contact: Epoxy, Buna N, and cord